

# *AWS 900 and AWS 900+ Logictivity*

---

## **Upgrade Instructions**

# Kit Contents

## Upgrade Kit Contents

There are two variants of upgrade kit. One is for AWS 900 Classic consoles (black end and top trim, silver faders) and one for AWS 900+ consoles (silver end and top trim, black faders). Kit contents are as follows.

### AWS 900 Classic Logictivity Upgrade Kit

SSL Pt No 70930SE1

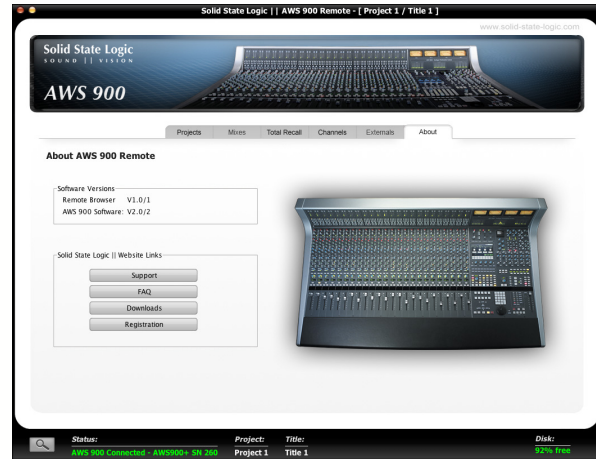
- 1 off PLCC Puller
- 1 off Programmed Monitor PROM
- 1 off Anti Static Bag
- 1 off Licence Serial No Printout
- 1 off Console SSL Logictivity Badge
- 1 off Upgrade Instructions — this document

### AWS 900+ Logictivity Upgrade Kit

SSL Pt No 70930SE2

- 1 off Licence Serial No Printout
- 1 off Console SSL Logictivity Badge
- 1 off Upgrade Instructions — this document

**In Colour:** If you would like to see the pictures in this booklet in colour, please take a look at the AWS 900 Documentation tab on the SSL website—<http://www.solidstatellogic.com>



## IMPORTANT SYMBOLS



- RISK OF ELECTRIC SHOCK
- TECHNICALLY QUALIFIED PERSONS ONLY



- ANTI STATIC PRECAUTIONS MUST BE OBSERVED

# Introduction

Thank you for purchasing the AWS Logictivity upgrade for your AWS console. After the installation your system will benefit from the full range of AWS 900+ SE features. These include:

- Logictivity browser allowing renaming of scribble strips, external sources, mixes, TR setups as well as providing fast and reliable archiving and restoring of automation and TR setups over Ethernet
- Two switchable workstation layers
- MIDI over Ethernet driver (ipMIDI). This driver eliminates the need for a remote midi interface between your AWS console and workstation
- When using the ipMIDI driver, two of the conventional midi ports on the console are mapped to the ipMIDI driver allowing local connection of keyboards and other midi devices with conventional connectors. Via Ethernet, these Midi devices are available on your workstation
- Fast and reliable software installation via Ethernet
- AUTO CUE option for talkback, listen mic and red light switch
- Monitor volume control calibration for film mixing and fine gain control options
- Solo isolate
- Soft restart of the console

## **IMPORTANT - PLEASE READ CAREFULLY**

**Before attempting the upgrade, please read these instructions in full to ensure that you have sufficient time, technical skills and the required cross over RJ45 network cable to complete the upgrade. If you would prefer an SSL technician to complete the upgrade, please contact your local SSL distributor or office.**

# Contents

<b>Section</b>	<b>Page</b>
1. Exchanging the Monitor PROM	5
2. Enabling the AWS Logictivity features on your console	9
3. Install the latest AWS900 or AWS900+ software	10
4. Install the ipMIDI driver and Logictivity browser	14
5. Software Installation (Macintosh)	15
6. Software Installation (PC)	16
7. Make and configure the network connection	17
8. Direct Network Configuration (Macintosh)	18
9. Direct Network connection (PC)	22
10. Enabling ipMIDI on your AWS	24
11. Finding the console using AWS Remote application	25
12. Setting your workstation(s) to communicate via ipMIDI	26
13. Network trouble shooting	34
14. Larger networks	36
15. Assigning the AWS900+ IP Address	37
16. SSL Logictivity badge	38
Licence	39

# 1. Exchanging the Monitor PROM

The exchange of the CPU card's Monitor PROM is **only** necessary on AWS 900 Classic consoles. The Monitor PROM on the AWS 900+ CPU already incorporates AWS Logictivity support.



- The instructions on exchanging the Monitor PROM are intended for technically competent personnel. To reduce the risk of electric shock do not perform the upgrade unless you are competent to do so. If you would prefer an SSL technician to complete the upgrade, please contact your local SSL distributor or office.



- Disconnect the power cord before removing any panels or modules.

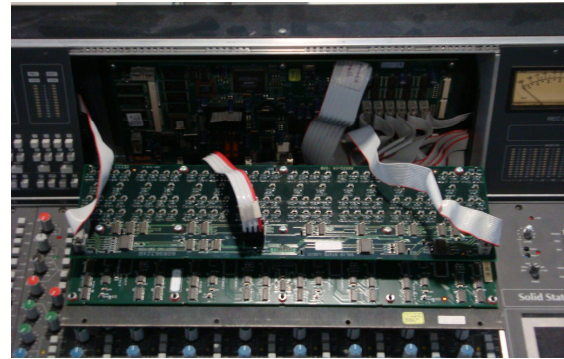


- Take basic antistatic precautions. Electrostatic discharge (ESD) can damage electronic components, even if you cannot feel, see, or hear it.

**Please note that the console will not boot fully after the new Monitor PROM is installed. However, the console's processor will boot into a basic download mode allowing the new SE Logictivity software to be transferred.**

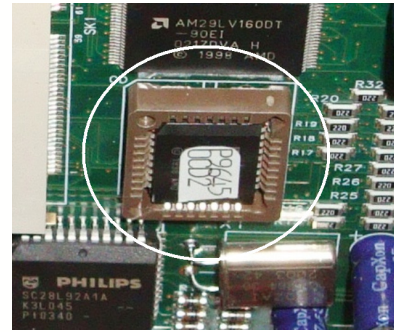
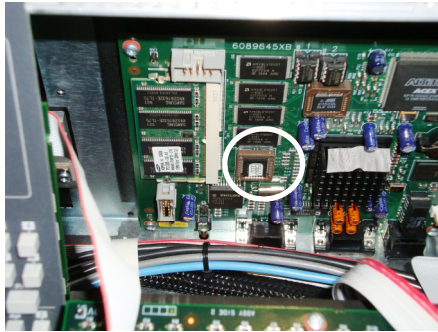
- 1) Grasp an exposed metal part of the AWS chassis with your bare hand to discharge any static charge you may have accumulated.
- 2) Unplug the mains power cord to the rear of the console. Wait 10 seconds to allow any residual charge in the console's electronics to decay.
- 3) Working from the rear using the Pozidrive screw driver supplied with the console, remove the four screws securing the top trim. Remove the top trim.

- 4) Using the Pozidrive screw driver, remove the four screws securing meter panel 17-24 in position. Tilt the panel forward slightly and lift the panel out of its slot. Lay the panel onto channels 17-24. It is not necessary to unplug any of the meter panel's connections.

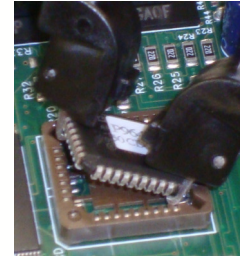
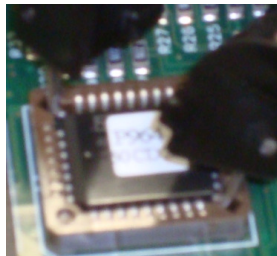


- 5) On consoles shipped prior to the 3<sup>rd</sup> November 2005 (serial numbers AWS001 – 144 approximately) a screening plate covered the AWS900's CPU card. Remove this screening plate taking care not to drop any screws into the console.

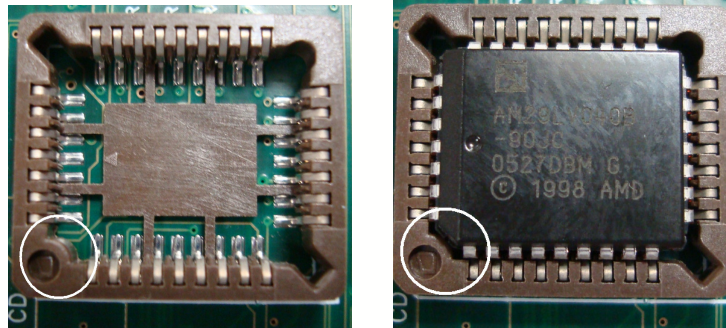
- 6) The AWS900's CPU card will now be visible. With the help of the picture below locate the card's Monitor PROM in PCB location CD.



- 7) Using the supplied PLCC IC puller, remove the existing PROM. Squeeze the tool to align its hooks with the slots in opposite corners of the socket. Insert the hooks fully, squeeze gently, and pull the IC straight out of the socket.



- 8) Note the key (angled corner) on the replacement Monitor PROM. Orient the replacement PROM to match the key on the socket. Carefully ensure correct orientation of the IC then press in place . Excessive force should not be necessary.



- 9) Follow steps 3, 4 and 5 in reverse to reassemble the console.
- 10) Reconnect the mains power cord. The processor will now be in a download mode waiting for the AWS900+ SE software to be transferred via Midi. The console will not boot fully until the new software is installed.

## 2. Enabling the AWS Logictivity features on your console

- 1) Find the console's serial number. The serial number label is located on the rear of the console adjacent to the mains inlet connector. The serial number starts with the letters AWS followed by a numerical number. Make a note of the numerical number for the registration process (e.g. if the serial number is AWS293, note 293).
- 2) If you have not registered your console on-line (or you have forgotten your username), complete the on-line registration:

<http://web.solid-state-logic.com/update/newuser.jsp>

- 3) Navigate to the on-line registration page and enter your activation code and the numerical element of your console's serial number previously noted. The activation code can only be used once. Please ensure that you enter the correct serial number:

<http://web.solid-state-logic.com/update/activateacode.jsp>

- 4) After a successful activation, you will be invited to download and install the latest version of software. Follow the link to the download page.

### 3. Install the latest AWS900 or AWS900+ software

The software is packaged as a 3MB (approximately) Java archive file. The file format is compatible with both PC and Macintosh (OS X only) platforms.

- 1) Download the latest version of AWS software from the download page on to the hard drive of your workstation.
- 2) Check that your host computer has the correct version of Java.

PC users: Ensure that you have the latest version of Java installed (this can be downloaded from <http://www.java.com>).

Mac users: Java is included with OSX. Run your OSX Software Update to ensure that Java version 5 or above is installed on your Mac. You will also need a Java Library Extension which can be downloaded from <http://www.mandolane.co.uk>.

For Intel based Mac download Mandolane MIDI SPI. Open the downloaded zip file and drag the libMandoMidiJNLib.jar and libMandoMidiJNLib.jnilib files to your /Library/Java/Extensions folder.

***Please note that Mandolane make a small charge for the library extension.***

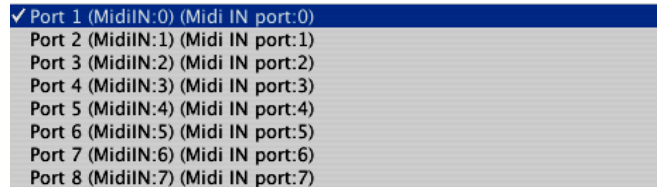
For Power PC based machines download Plumstone.

Open the downloaded zip file and drag the plumstoneserv.jar file to your /Library/Java/Extensions folder.

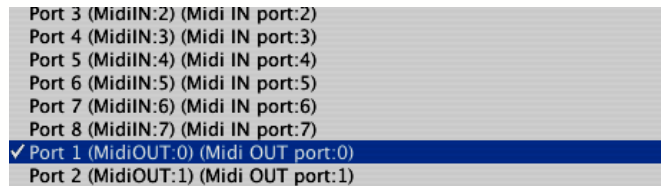
You may be warned that the file cannot be moved because extensions cannot be modified. In this case click on “Authenticate” and enter your Mac OSX admin password.

- 3) Ensure that your AWS is powered and connected to the MIDI port on your workstation. Close all current applications on your workstation.

- 4) Double click on the AWS Software Update File. You should see the SSL AWS Software Update window appear.
- 5) Go to the **In MIDI Port** menu. From the drop down list, select the MIDI IN port which is connected to MIDI port 1 on your AWS console. In the example shown below this was port 1 on an 8 port interface. If the list is empty, check that you have installed the files detailed in step 2.



- 6) Go to the **Out MIDI Port** menu. From the drop down list, select the MIDI out port which is connected to MIDI port 1 on your AWS console.



*Note that some Power PC based Macintosh computers will show all MIDI Inputs at the top of the list, MIDI Outputs at the bottom. You must scroll to the middle of the list to see the MIDI out ports.*

- 7) Click on the Test button. This will transmit a packet of data to the AWS console which then in turn should return an acknowledge packet back to the computer. If the test was successful the message 'Comms test passed, now use send' will be displayed. If the test fails you should check that the correct Midi port has been selected and repeat the test.



- 8) Once you have established a valid connection click on the Send button. The new code will now be transferred to memory on the CPU card. This process will take approximately 40 minutes due to the slow data transfer rate of MIDI and the error checking of each packet transmitted. A progress bar and transfer counter will be displayed on screen to enable you to observe the transfer progress.

- 9) Once the code has been successfully transferred click on the Save button to store the new software – this takes approximately 60 seconds. A progress bar allows you to observe the saving process.

During this time it is important that power to AWS is not interrupted. To enable new software to be written into flash memory AWS must first erase the current software. If this process is interrupted by a power failure the AWS will be left with no valid software. In this state AWS will be unable to re-boot. Should this happen the AWS CPU will default to a MIDI download state and you will have to repeat the download process.

- 10) Once the software has been saved a ‘Please Re-Power Your Console’ message will appear.
- 11) Switch power on and off to reboot your console.

## 4. Install the ipMIDI driver and Logictivity browser

Download the AWS 900 Remote and ipMIDI applications on to your workstation computer from here:

<http://www.solidstatellogic.com/support/consoles/aws900+/downloads.asp>

### **System Requirements for your workstation computer:**

**AWS Remote** is a Java application.

It will run under Java Version 5 or higher.

**ipMIDI** is compatible with Windows 2000 (maximum 9 MIDI ports), XP and Vista and Macintosh OSX 10.4 and OSX 10.5.

## 5. Software Installation (Macintosh)

**AWS Remote:** Mount the AWSRemote.dmg disk image and open it. Drag the enclosed AWS Remote application to the Applications folder, then to the Dock or any other convenient location.

**ipMIDI:** Mount the ipMIDI.dmg disk image and open it. Double click on the ipMIDI.pkg file to run the installation program. Note that you will be asked to log out and in again once you have completed the installation. Once you have logged back in open Audio MIDI Setup and double click on the ipMIDI icon. Set the number of MIDI ports to 12 in the resulting pop-up.

If you are upgrading an older copy of ipMIDI you must uninstall it before running the installer. To uninstall ipMIDI simply delete: </Library/Audio/MIDI Drivers/ipMIDIDriver.bundle>. You should empty the Trash after deleting the .bundle file before running the installer.

## 6. Software Installation (PC)

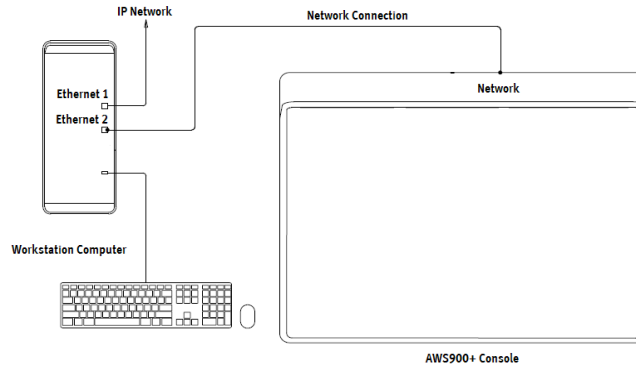
**AWS Remote:** Copy the **AWSRemote.exe** file to the Program Files folder (or any other convenient location) then create a shortcut to it on your desktop and/or task bar. Double clicking on this will launch the Matrix Remote program.

**ipMIDI:** Run the **setupipmidi\_1.6.exe** application (note that the last part of the name may change depending on the version you are installing) by double clicking on it. Note that you will have to restart the computer at the end of the setup process. Once the computer has restarted right click on the ipMIDI icon in the task bar and set the number of MIDI ports to 12 in the resulting pop-up.

If you are upgrading an older copy of ipMIDI you must uninstall it (using Add/Remove programs) before running the installer.

## 7. Make and configure the network connection

The AWS Logictivity software is designed to communicate with your workstation over Ethernet using the ipMIDI driver to emulate a multiport MIDI interface. The ipMIDI driver enables your workstation to send and receive MIDI control data via a network connection. Using Ethernet ensures the fastest possible communication between your workstation computer and AWS. This network connection is essential if you wish to benefit from all of the new SE features. The standard installation uses an RJ45 crossover network cable (not supplied) to connect the console's network connector directly to a separate network port on your workstation computer using the console's default fixed IP address of 192.168.1.2. Note that many computer adaptor cards may autosense a direct connection negating the need for a crossover cable. If you are unsure whether your workstation computer's network adapter has this functionality, please use a crossover rather than a pin to pin cable.



It is possible to connect AWS to a larger network which incorporates multiple computers and to enable dynamic (DHCP) addressing. These configurations need special consideration. Please see the notes at the end of these instructions for details.

## 8. Direct Network Configuration (Macintosh)

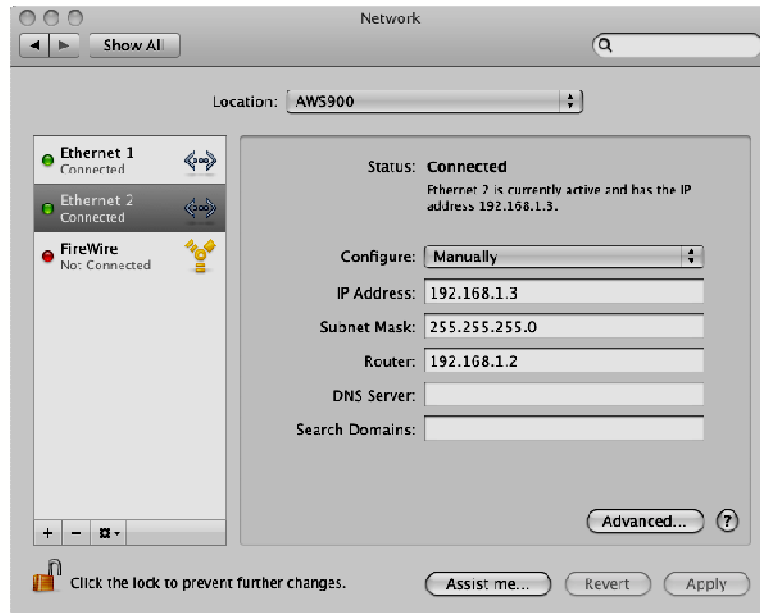
Please note that currently OS X does not allow two ports to be used for IP traffic. As such, the connection to your main network will not be available while the AWS is connected.

To simplify the process of switching between networks, it is recommended that you create a new network Location for the AWS900 in network preferences. Another Location ('Internet', for example) could be created to enable connection to the internet. This would use the network settings provided by your Internet Service Provider or network administrator. You can easily switch between network Locations by going to the Apple Menu and scrolling down to Location.

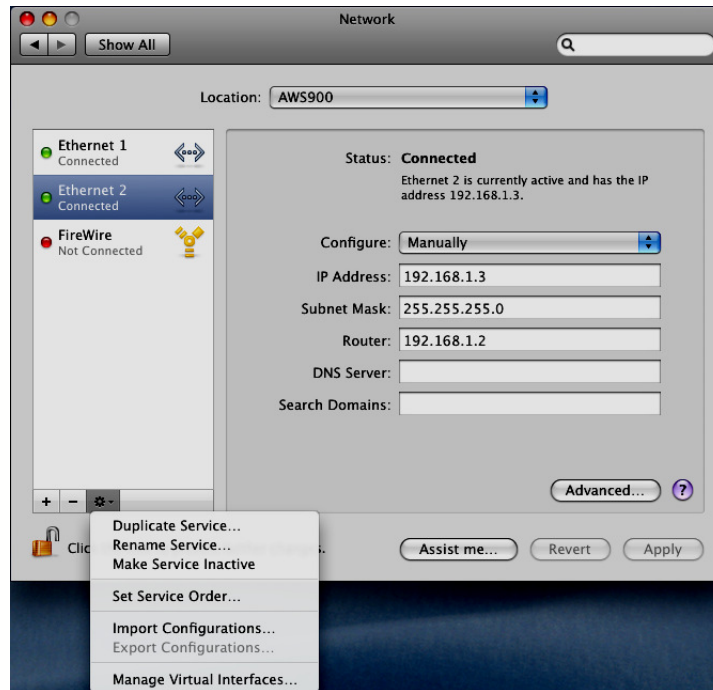
Using an RJ45 cable, make a direct network connection between the network port on your AWS to a network port on your workstation computer and check that the IP address is set to FIXED in the console's SSL/MISC/NET menu.

Open System Preferences and click on Network. Create a new location by clicking where it says Location, scroll down to Edit Locations and click the '+' sign. Name the new location AWS900.

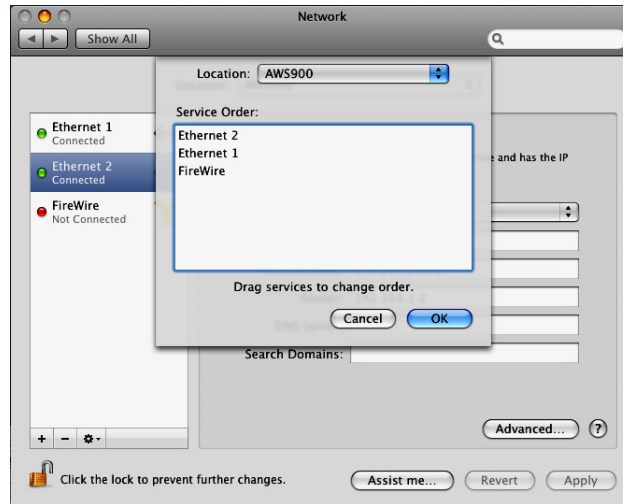
Next select the Ethernet port which is connected to the AWS and configure as shown below:



If your Macintosh features multiple network ports, you should set the priority of these so that the Ethernet port connected to your AWS is at the top of the list. To do this, choose Set Service Order from the Actions pop-up menu:



Now drag the port connected to the AWS to the top of the list (in our example this port is Ethernet 2):

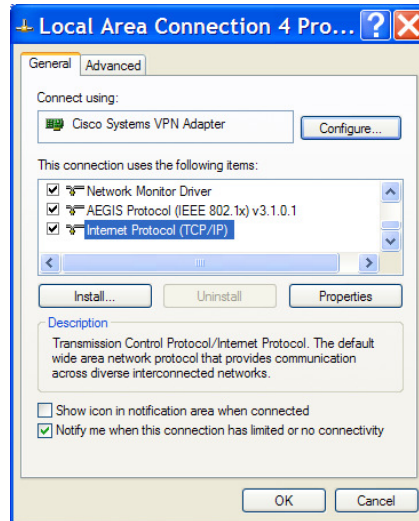


Now click OK, then Apply.

Alternatively, if you have already created a separate Location for your existing network you can simply delete the unused ports (Airport, Firewire) from the AWS900 Location so that only the network port connected to AWS is remaining.

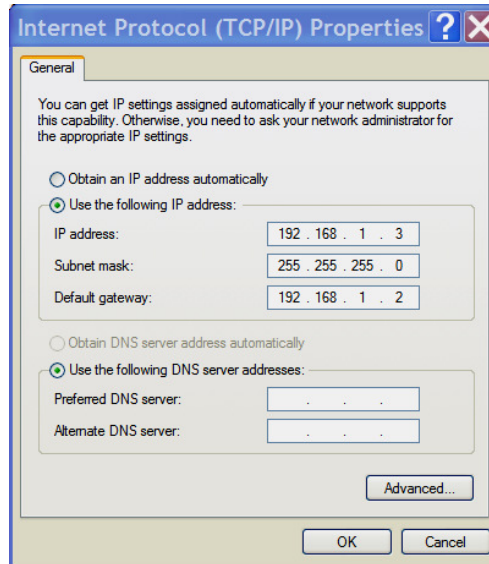
## 9. Direct Network connection (PC)

- Double click on Network Connections in Start/Control Panel. Right click on the network adapter connected to your AWS (likely to be called "Local Area Connection"). Select Properties.



- Select Internet Protocol (TCP/IP) and Properties.

- Next, configure the adapter as shown below:



Click on OK on both windows to save. Back in your network connection list, right click on your adaptor and ensure that it is enabled. If it is disabled, the enable option will appear in the list. Click on enable.

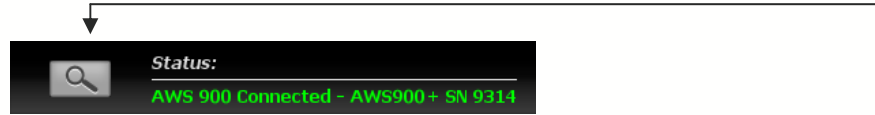
## 10. Enabling ipMIDI on your AWS

In the SSL/MISC/SETUP menu, toggle the 'MIDI Connects Via' setting to 'Network'. Your console will now communicate with your workstation via Ethernet. With 'MIDI Connects Via' set to 'MIDI Ports', AWS will communicate with your workstation via the conventional MIDI connectors on the rear of your console.

Also in the SSL/MISC/SETUP menu, ensure that the 'DAW1' option (workstation layer 1) and DAW2 (workstation layer 2) are set to match your workstation or workstations if you are using the second layer. Please note that you may need to restart the console after making a change to the DAW layer options.

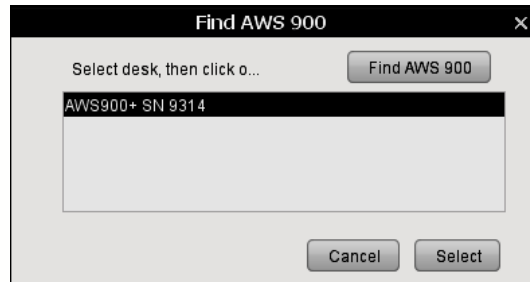
# 11. Finding the console using AWS Remote application

Launch AWS Remote on your workstation. If you only have one AWS console on the network, AWS Remote will automatically locate the console and the message 'AWS 900 Connected' will be shown in green text in the bottom left hand corner of the browser:



If you have multiple AWS consoles on the network or the AWS Remote browser did not automatically locate your console 'No AWS 900 connected' will be shown in red text. In this instance, click on the find icon 

If the list is empty, click on find AWS900, select the console you wish to connect to and click on select.



If your console does not appear in the list, it suggests you have a network related issue. Please follow the steps in the network trouble shooting section at the end of this document to resolve the issue.

## 12. Setting your workstation(s) to communicate via ipMIDI

The AWS Logictivity software enables 12 MIDI ports which are pre-assigned as follows:

Port	Layer	Assignment	Port	Layer	Assignment
1	1	Faders 1-8	9	-	AWS Midi port 1
2	1	Faders 9-16	10	-	AWS Midi port 2
3	1	Faders 17-24	11	-	
4	2	Faders 1-8	12	-	
5	2	Faders 9-16	13	-	
6	2	Faders 17-25	14	-	
7	-	MTC input	15	-	
8	-	SysEx	16	-	

Note that there are now two switchable workstation layers allowing to independent workstations to be interfaced. Once configured, you can switch between the two layers using the console's SSL/DAW menu.

Port 7: If your console has AWSomation, this port is used for MIDI Time Code (MTC).

Port 8: Used for the import and export of legacy SysEx TR and AWSomation data.

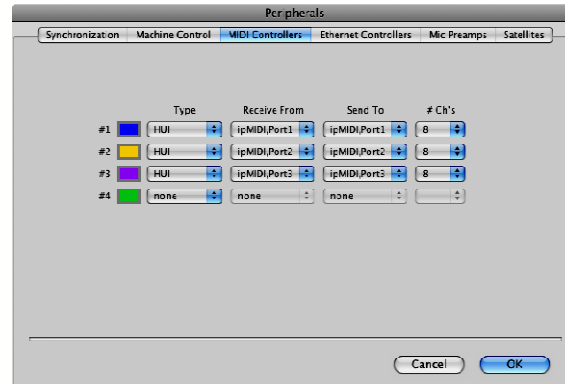
Port 9-10: Mapped to the conventional MIDI connectors on the rear of the console.

**NOTE: In addition to ipMIDI port 7, hardware MIDI port 4 on the rear of the console is also hard coded as an MTC input. To avoid contention, only use one of these two MTC ports at any one time.**

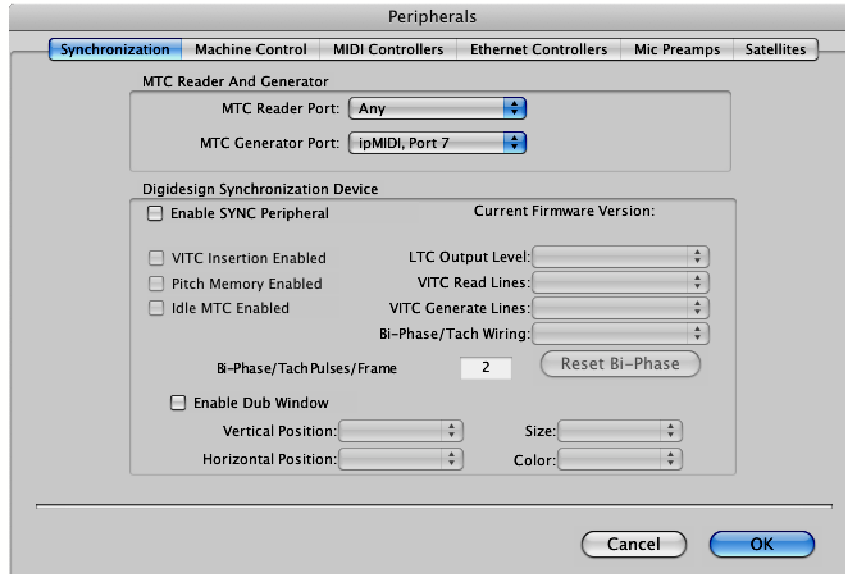
To enable control of your workstation via HUI or MCU your workstation(s) must be configured to match the appropriate layer in the list above. This is done using the MIDI Controller configuration page of your workstation. Below are two examples using Pro Tools 7 and Logic Pro 8:

### Pro Tools 7

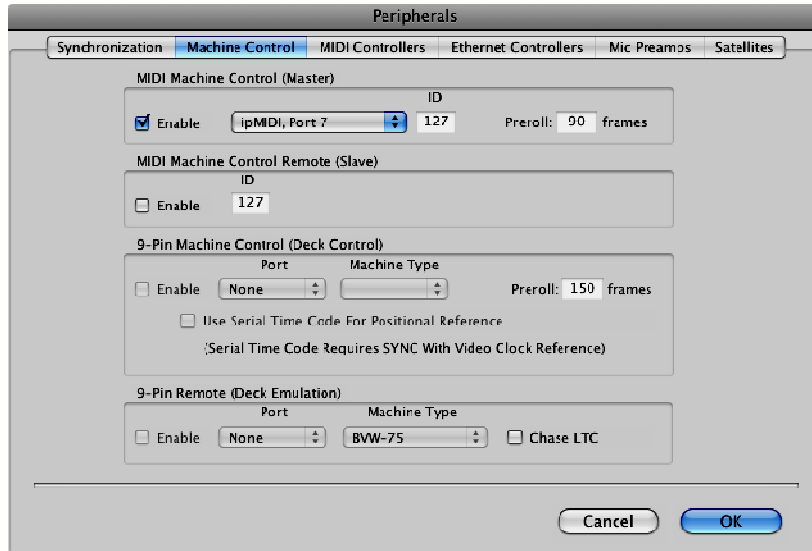
In the Setup menu, click on Peripherals and select the MIDI Controllers tab. Using MIDI controllers 1, 2 and 3, select HUI as the MIDI controller Type and assign the MIDI ports for this layer's DAW to the two MIDI controllers, as listed in the table above. If Pro Tools has been assigned to Layer 1, the MIDI Controllers window should look like this:



If you have AWSomation, set the MTC generator port in the Synchronization tab to ipMIDI port 7:



Also, set the MMC midi port in the Machine Control tab to ipMIDI port 7:



## Logic Pro 8

When Logic is assigned to one of the two AWS workstation layers a Mackie Control together with a Mackie Control Extender must be added to the Logic Pro Preferences/Control Surfaces Setup menu.

AWS Faders 1-8 are mapped to the Mackie Control ports along with the Master Fader and workstation Control function switches. AWS Faders 9 -16 and 17-24 are mapped to the Mackie Control Extender ports. The actual ipMIDI ports used will depend on which layer (or layers) Logic is assigned to. See the list of AWS MIDI port assignments for details. It is essential that the layout shown is followed. If the physical arrangement is reversed, then the AWS faders will not map correctly to the on-screen faders in Logic.

If Logic is the only DAW connected to AWS, then provided that there is only one DAW layer set up with an MCU configuration, Logic should automatically detect the three virtual controllers which will be shown in the Logic Setup menu (as shown in fig 12.1 opposite), with the appropriate AWS ipMIDI ports assigned. If Logic fails to detect the control surfaces, then the controllers can be added manually via the New/Install menu and the appropriate MIDI Out port and Input assigned. Full details can be found in the online Logic Pro 8 Control Surfaces Support guide in the Logic Help Menu. If AWS is set up with two MCU layers, then the automatic detection option must be disabled and the controllers added and configured manually. Check the Disable Handshake option in SSL/MISC/SETUP is set to yes. This will prevent Logic automatically detecting multiple Mackie Control Units.

Note: Logic's Click and Ports environment layer selects the SUM of all of the ipMIDI input ports as its default MCU control data source. This may lead to difficulties when using multiple DAW layers. To avoid Logic responding to MIDI messages intended for the other DAW layer, the Click and Port MIDI port mapping should be changed from SUM to individual direct MIDI port assignment. The example in fig 12.2 on P32 shows Logic on DAW layer 1.

Fig 12.1 Preferences/Control Surfaces Setup menu:

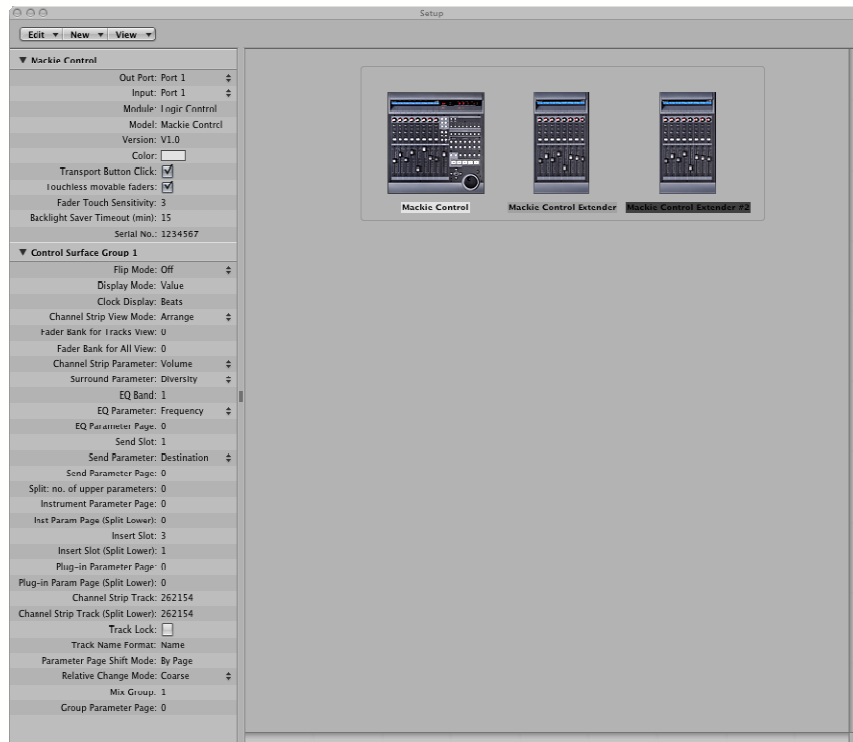
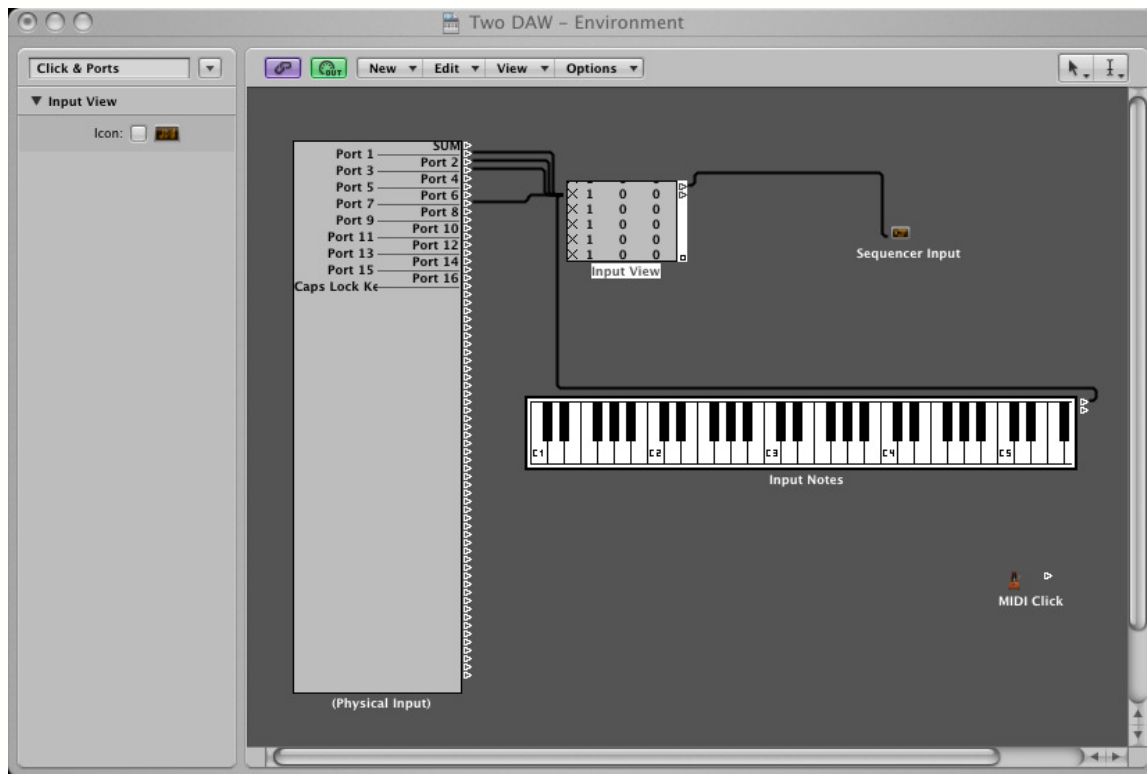
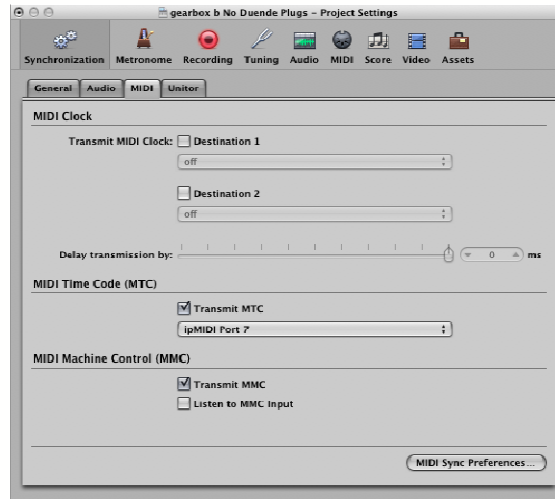


Fig 12.2 Click and Port MIDI port mapping (see P30)



If you have AWSomation, set the MMC midi port in File/Project Settings/Synchronisation/MIDI to ipMIDI port 7:



For other DAWs, please refer to the program's manual for details about configuring MIDI controllers.

Now its time to follow the AWS900+ SE User's Guide which explains the new features and their operation. This document will help ensure that you get the most from the upgrade.

<http://www.solidstatelogic.com/support/consoles/aws900+/documentation.asp>

## 13. Network trouble shooting

Most Ethernet adaptor cards have two LEDs associated with each port. The first indicates that the link is connected and the second indicates network traffic. Please note that some Macintosh computers do not have external LEDs to indicate status. Instead the link status is shown in the System Preferences/Network menu.

On your host workstation computer, confirm that the link LED is permanently illuminated. If it is not permanently illuminated, it suggests you have a cabling error. In this instance please check the following:

- The RJ45 network connector on the console and on your workstation are fully inserted
- If you are using a pin to pin cable to make a direct connection between your console and workstation, try replacing your cable with an RJ45 crossover cable
- Try replacing the network cable
- If you are not using a direct connection between your console and workstation using the default fixed IP address on the console, please try this simple configuration to rule out issues with external routers and network switches

If the link led is illuminated, the next step is to confirm that the activity LED is illuminating periodically to show network traffic. If it does not illuminate periodically check the following:

- If your workstation is not connected directly to your console using a crossover RJ45 cable and fixed IP addressing, follow the installation instructions to configure this simple network configuration to rule out issues with any external routers or network switches.
- Using the fixed default IP address on the console, check that the workstation has basic communications using 'ping'.

On Windows: Select Run under the Start menu. In the resulting window enter *cmd* to launch the command prompt. In the command prompt window enter *ping 192.168.1.2*

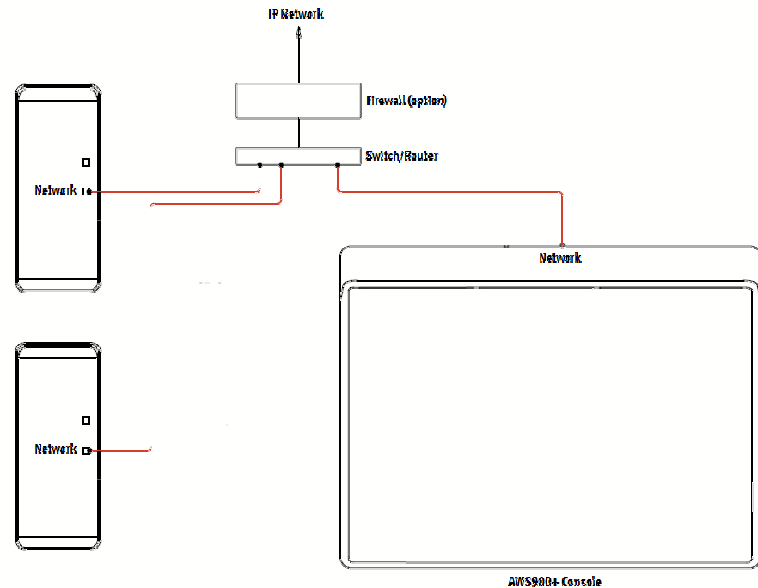
On OSX: Open a Finder window, select Applications, then Utilities, and double-click on Terminal. In the terminal window enter *ping -c4 192.168.1.2*

In both cases your host computer will try to establish communications with your console. In the resultant terminal text, check that the console responded to every message sent by your workstation.

## 14. Larger networks

To ensure minimum latency the ipMIDI driver uses multicast UDP rather than TCP/IP. This means that:

- The network connection should be as short as possible and should only use routers that can support high data transfer rates. Problems have been experienced with some domestic routers, particularly when used with Pro Tools.
- Messages between one computer and AWS900+ will be received by all other computers on the network, potentially causing problems in installations with more than one AWS900+. The UDP packets can be blocked by using a firewall router and connecting the main network to the WAN connector. The firewall can then be configured to allow all traffic apart from UDP ports 21928 through 21947 which are used by ipMIDI and port 50081 which is used by the AWS900+ Remote application. Note that it may be necessary to use a separate Ethernet switch in place of the integrated firewall router switch, as some of these can not support the high data transfer rate required. The NetGear FS108 (an eight port switch) has been used successfully. Most systems can be easily configured with a direct connection between AWS900+ and the controlling computer.



## 15. Assigning the AWS900+ IP Address

By default, AWS900+ uses a fixed IP address of 192.168.1.2. Dynamic (DHCP) address can be selected via the SSL/MISC/NET menu. The currently assigned address is also shown in the MISC/ABOUT/NET menu. If your AWS900+ is connected to the computer via a network switch or router, it should be assigned a DHCP IP address; otherwise the fixed option should be used. Once you have altered the IP mode, you need to restart your AWS for the change to take effect. A software restart option is available in the SSL/MISC/NET menu.

An alternative fixed IP address can be set using the console diagnostic port. This should not be necessary in most installations. You will need a PC or Mac running terminal emulator software. Connect your computers serial port to the rear of the console using a 9 way 'D' type extension cable. The pin out for the console's 9 way 'D' type serial connector is shown below:

Pin		Description
1		Carrier (linked to 0V)
	2	Tx
3		Rx
	4	DTR (linked to DSR)
5		0V
	6	DSR (linked to DTR)
7		RTS (linked to CTS)
	8	CTS (linked to RTS)
9		RI (linked to 0V)

Set the terminal as follows: Baud rate 19200, 8 data bits, No parity, No start bit, 1 stop bit, Flow control Xon/Xoff

Press the 'Return' key (<CR>) and the terminal window should echo a '>' if communication is established. To fix the IP address type the following:

`ip <CR>`

`setip nnn nnn nnn nnn <CR>`

where 'nnn...' is the IP address, e.g. '10 1 1 10'.

`setmask nnn nnn nnn nnn <CR>`

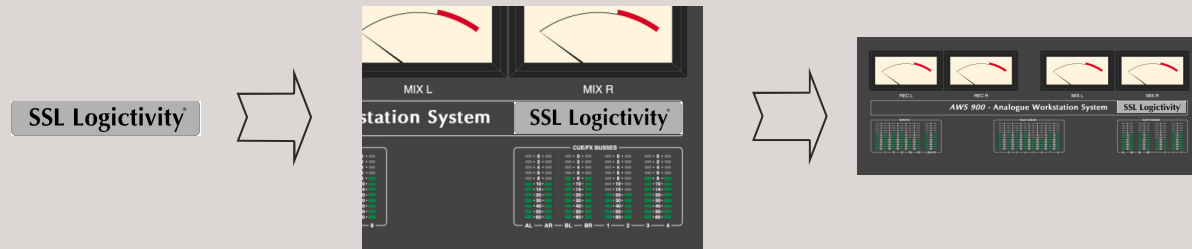
where 'nnn...' is the subnet mask, e.g. '255 255 255 0'. Note that this should match other devices local to the console.

`setgate nnn nnn nnn nnn <CR>`

where 'nnn...' is the gateway address e.g. '10 1 1 1'

## 16. SSL Logictivity Badge

In the upgrade kit you'll find a small badge designed to show your console has been upgraded for Logictivity. Carefully attach this badge to the meter-bridge location illustrated below.



# Licence

**Software Licence Agreement:** Solid State Logic ('SSL') is willing to license this AWS 900 software and accompanying documentation for this product (the 'Software') to the customer (the entity that purchased the product and software) on the condition that you read and accept all of the terms in this agreement. Please read the terms below carefully. By continuing to install the software and using the enclosed information to license the software you acknowledge that you have read and understood the agreement and agree to be bound by its terms and conditions. If you do not agree to these terms then do not open this package, discontinue the installation process and contact your local SSL representative for advice.

**Licence:** SSL hereby grants you a non-exclusive licence to install and use the Software in machine-readable form on a single console. You may copy the software only for backup purposes, provided that you reproduce all copyright and other proprietary notices that are on the original copy of the Software.

**Restrictions:** SSL retains the right, title and interest in and to the Software, and any rights not granted to you herein are reserved by SSL. You may not reverse engineer, disassemble, decompile, or translate the Software, or otherwise attempt to derive the source code for the Software, except to the extent allowed under applicable law. If applicable law permits such activities, any information so discovered must be promptly disclosed to SSL and shall be deemed to be the confidential proprietary information of SSL. Any attempt to transfer any of the rights, duties or obligations hereunder is void. You may not rent, lease, loan or resell for profit the Software, or any part thereof. You may not reproduce, distribute or create derivative works of the Software.

**Limitation of Liability:** In no event will SSL or its suppliers be liable for profits or other consequential, incidental or special damages however arising, including negligence, in connection with the software or this agreement, even if SSL has been advised of the possibility of such damages. In no event will SSL's liability in connection with the Software, regardless of the form of action, exceed £100.

**Indemnity:** You agree to defend and indemnify SSL against all claims, losses, liabilities, damages costs and expenses, including legal fees, which SSL may incur in connection with your breach of this Agreement.

**General:** The Software is a commercial item. This Agreement is governed and interpreted in accordance with the laws of the United Kingdom.

# Solid State Logic

S O U N D | | V I S I O N

Visit SSL on the internet at: <http://www.solid-state-logic.com>

© Solid State Logic

All Rights reserved under International and Pan-American Copyright Conventions

---

AWS, AWS 900 and AWS 900+, Solid State Logic and SSL are trademarks of Solid State Logic

No part of this publication may be reproduced in any form or by any means, whether mechanical or electronic, without the written permission of Solid State Logic, Oxford, OX5 1RU, England

As research and development is a continual process, Solid State Logic reserves the right to change the features and specifications described herein without notice or obligation.

Solid State Logic cannot be held responsible for any loss or damage arising directly or indirectly from any error or omission in this manual.

E&OE