

Nucleus and Cubase/Nuendo Tutorial

V1.1

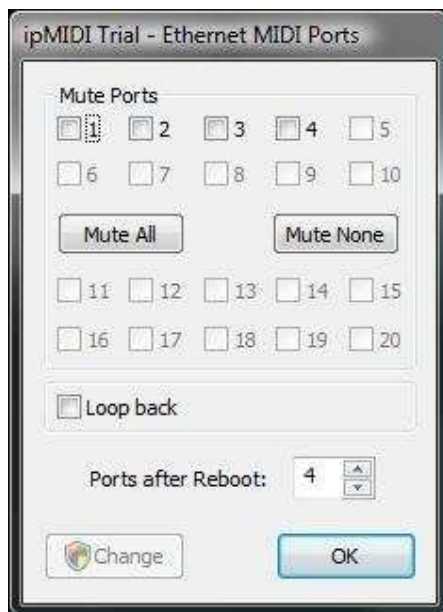
This tutorial details the steps required to enable communication between Steinberg's Cubase V4, V5 and V6 and Nuendo V4 and V5 software and your SSL Nucleus console.

This tutorial assumes that you have already installed the Nucleus software on your DAW and that there is both a working network connection and direct USB connection to the console. If you have yet to configure this part of your system please refer to the Nucleus Owner's manual before continuing.

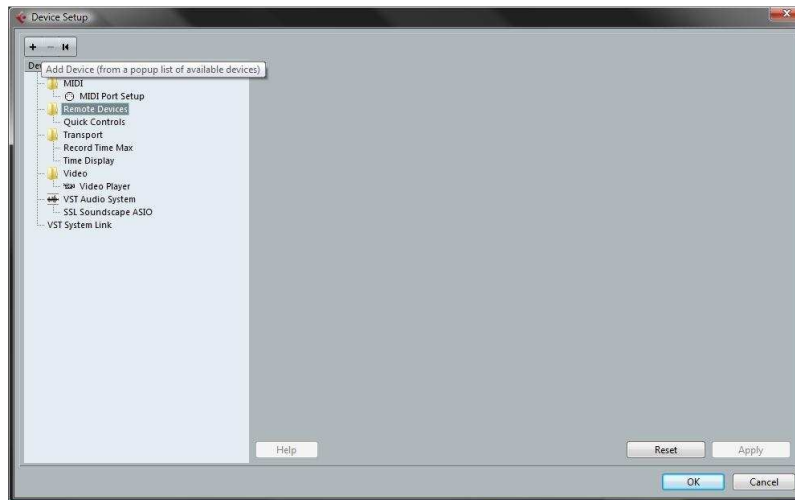
Windows Machines

Windows XP, Vista and Windows 7 (32+64-bit)

1. Locate the ipMIDI Monitor application. By default this is in *Start Menu>Programs>ipMIDI*
2. Ensure there are at least two active ipPorts and the Loop Back box is unchecked then press 'OK' to continue.



3. Launch Cubase/Nuendo and navigate to *Devices>Device Setup>Remote Devices*.

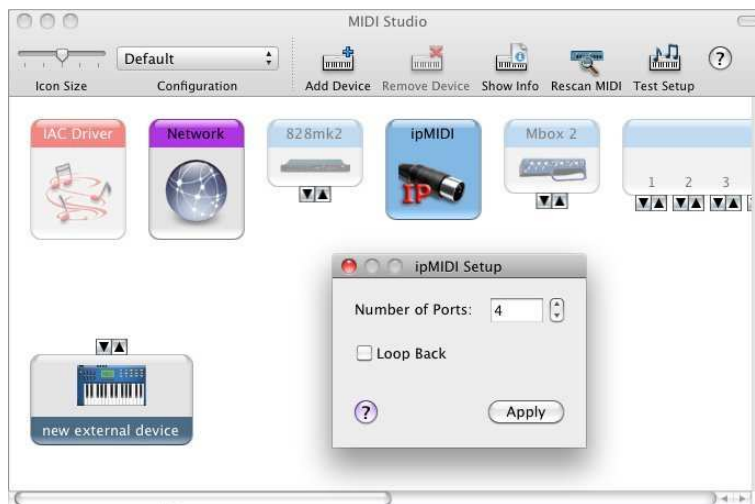


4. Click the '+' button to add a new device.
5. Choose 'Mackie Control'.
6. Assign this to Ethernet MIDI Port 2 for both Input and Output and click 'Apply'.
Note: MIDI port 2 must be assigned before port 1 for correct operation.
7. Again, click the '+' button to add a second Mackie Control.
8. Assign this to Ethernet MIDI Port 1 for both input and output and click 'Apply'.
9. Press 'OK' to exit this window.
10. Now go to the Nucleus Remote software and ensure the selected profile is 'Nuendo Default'.
11. Test for correct operation.

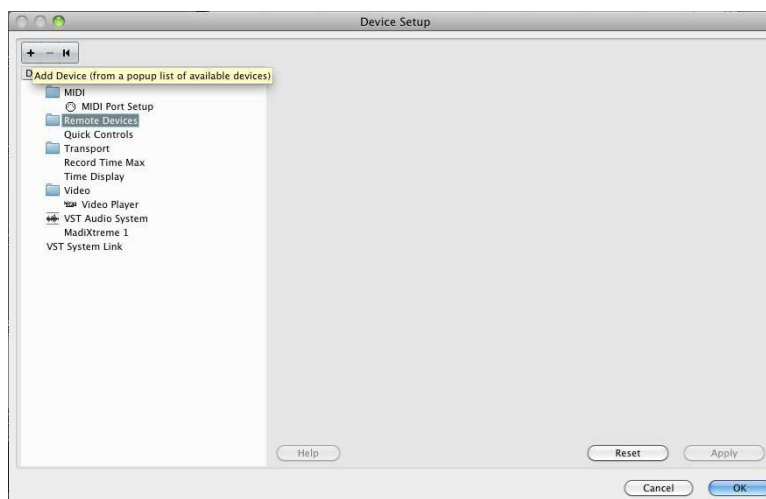
Apple Macintosh Machines

Mac OS 10.5.8 or higher

1. With all MIDI applications closed, navigate to *MacHD>Applications>Utilities>Audio MIDI Setup*.
2. If the MIDI window is not open go to *Window>Show MIDI Window*.
3. Double click the ipMIDI icon.
4. Ensure there are at least two active ipPorts and the Loop Back box is unchecked and press 'Apply'.



5. Launch Cubase/Nuendo and navigate to *Devices>Device Setup>Remote Devices*.



6. Click the '+' button to add a new device.
7. Choose 'Mackie Control'.
8. Assign this to Ethernet MIDI Port 2 for both Input and Output and click 'Apply'.
Note: MIDI port 2 must be assigned before port 1 for correct operation.
9. Again click the '+' button to add a second Mackie Control.
10. Assign this to Ethernet MIDI Port 1 for both input and output and click 'Apply'.
11. Press 'OK' to exit this window.
12. Now go to the Nucleus Remote software and ensure the selected profile is 'Nuendo Default'.
13. Test for correct operation.