

# Nucleus and ProTools Tutorial

## V1.1

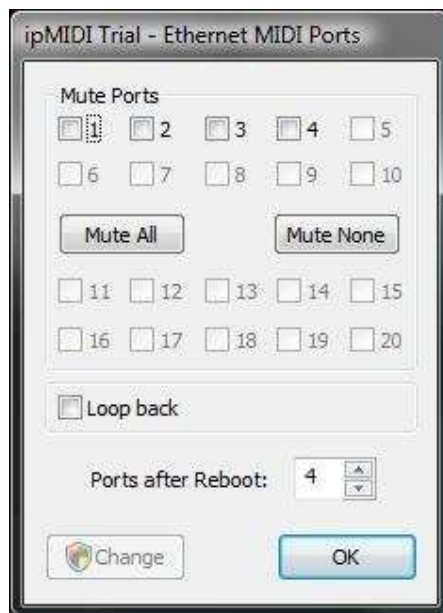
This tutorial details the steps required to enable communication between Avid's ProTools 8 or 9 software and your SSL Nucleus console.

This tutorial assumes that you have already installed the Nucleus software on your DAW and that there is both a working network connection and direct USB connection to the console. If you have yet to configure this part of your system please refer to the Nucleus Owner's Manual before continuing.

### Windows Machines

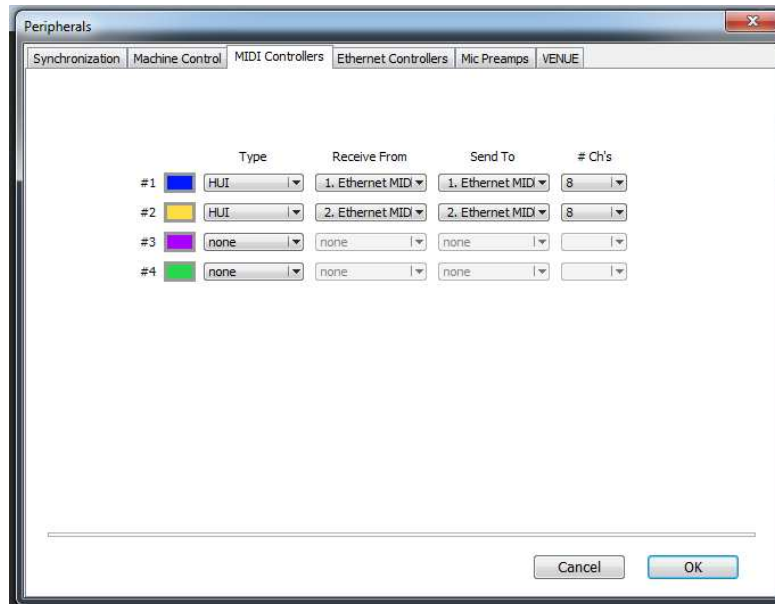
Windows XP, Vista and Windows 7 (32+64-bit)

1. Locate the ipMIDI Monitor application. By default this is in Start Menu>Programs>ipMIDI.
2. Ensure there are at least two active ipPorts and the 'Loop Back' box is unchecked, then press 'OK' to continue.



3. Launch ProTools and navigate to Setup>Peripherals>MIDI Controllers.

4. Nucleus appears as 2 HUI controllers. Set controller #1 to HUI and assign its 'Receive From' and 'Send To' ports to ipMIDI Port 1.
5. Set controller # 2 to HUI and assign its 'Receive From' and 'Send To' ports to ipMIDI Port 2.
6. Assign controllers #3 and #4 to 'None' as shown below.



7. Switch to the Nucleus Remote software and ensure the selected profile is 'ProTools Default'. Depending on the current setting this may require a reboot to place Nucleus into HUI mode.
8. Test for correct operation.

## Apple Macintosh Machines

Mac OS 10.5.x/10.6.x

1. With all MIDI applications closed, navigate to MacHD>Applications>Utilities>Audio MIDI Setup.
2. If the MIDI window is not open go to Window>Show MIDI Window.
3. Double click the ipMIDI icon.
4. Ensure there are at least two active ipPorts and the 'Loop Back' box is unchecked and press 'Apply'.



5. Launch ProTools and navigate to Setup>Peripherals>MIDI Controllers.
6. Nucleus appears as 2 HUI controllers. Set controller #1 to HUI and assign its 'Receive From' and 'Send To' ports to ipMIDI Port 1.
7. Set controller # 2 to HUI and assign its 'Receive From' and 'Send To' ports to ipMIDI Port 2.

- Assign controllers #3 and #4 to 'None' as shown below.



- Switch to the Nucleus Remote software and ensure the selected profile is 'ProTools Default'. Depending on the current setting this may require a reboot to place Nucleus into HUI mode.
- Test for correct operation.