

# Studio One Standard Nucleus<sup>2</sup> Profile

## Setup and Quick Start Guide



### Introduction

The first part of this tutorial details how to setup Studio One with your SSL Nucleus<sup>2</sup>. The second part details the commands assigned to the profile.

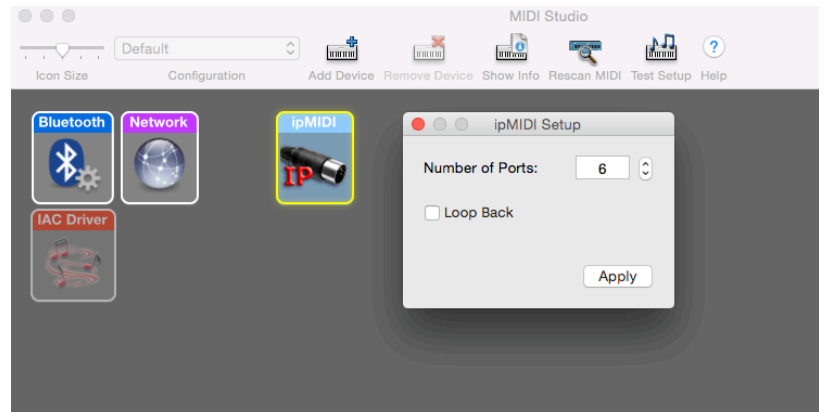
This tutorial assumes you have already installed all the necessary Nucleus<sup>2</sup> related software on your computer and that there is both a working network and USB connection from your DAW computer to the Nucleus. If you have yet to configure this part of your system, please refer to the Nucleus<sup>2</sup> Owner's Manual before continuing.

Go to the SSL website › Nucleus<sup>2</sup> Product page › Downloads to make sure your software is all up-to-date.

# ipMIDI Setup

## Apple MacOSX

- 1) Close all applications using MIDI
- 2) Open AudioMidi Setup (Applications > Utilities > Audio MIDI Setup)
- 3) Open the MIDI Window (Audio MIDI Setup > Window > Show MIDI Studio)
- 4) Double click the ipMIDI icon
- 5) Set number of ports to 6 and ensure that 'Loopback' is not ticked and then press 'Apply'



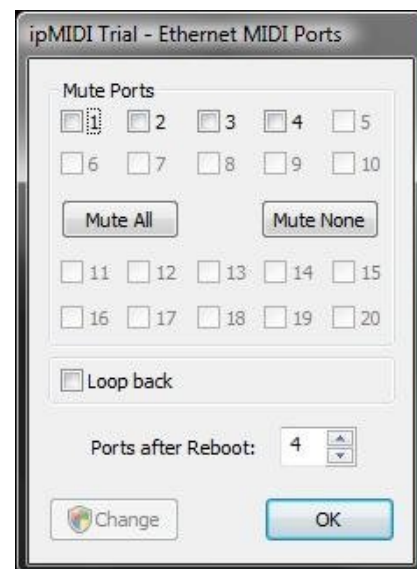
OR

## Microsoft Windows OS

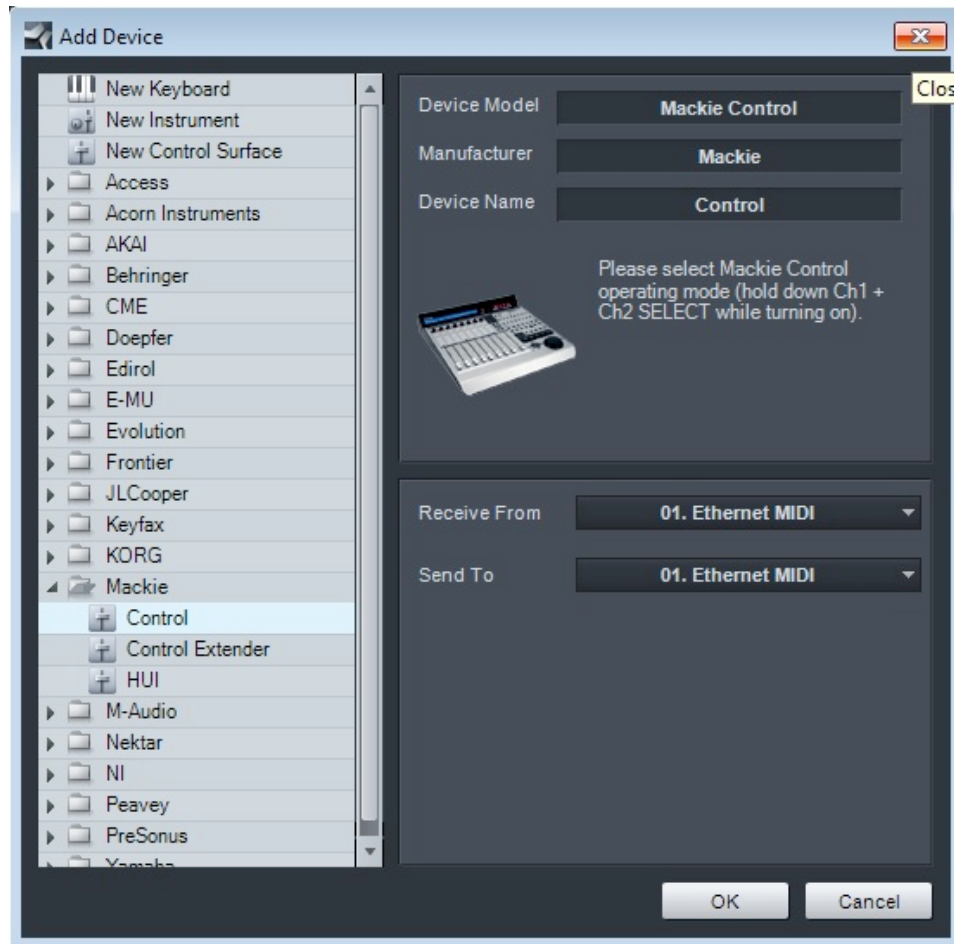
This setup information covers Windows 7, 8, and 10

- 1) Launch the ipMIDI Monitor application
- 2) Ensure Ports 1 to 6 are not muted
- 3) Un-tick 'Loop Back'
- 4) Set 'Ports after Reboot' to 6 and ensure that 'Loopback' is not ticked and then press 'OK'

**Note:** If you are opening up Ports for the first time, after Rebooting your computer, these will be 'muted'. Be sure to open ipMIDI back up and untick the muted Ports



# Setting up Studio One

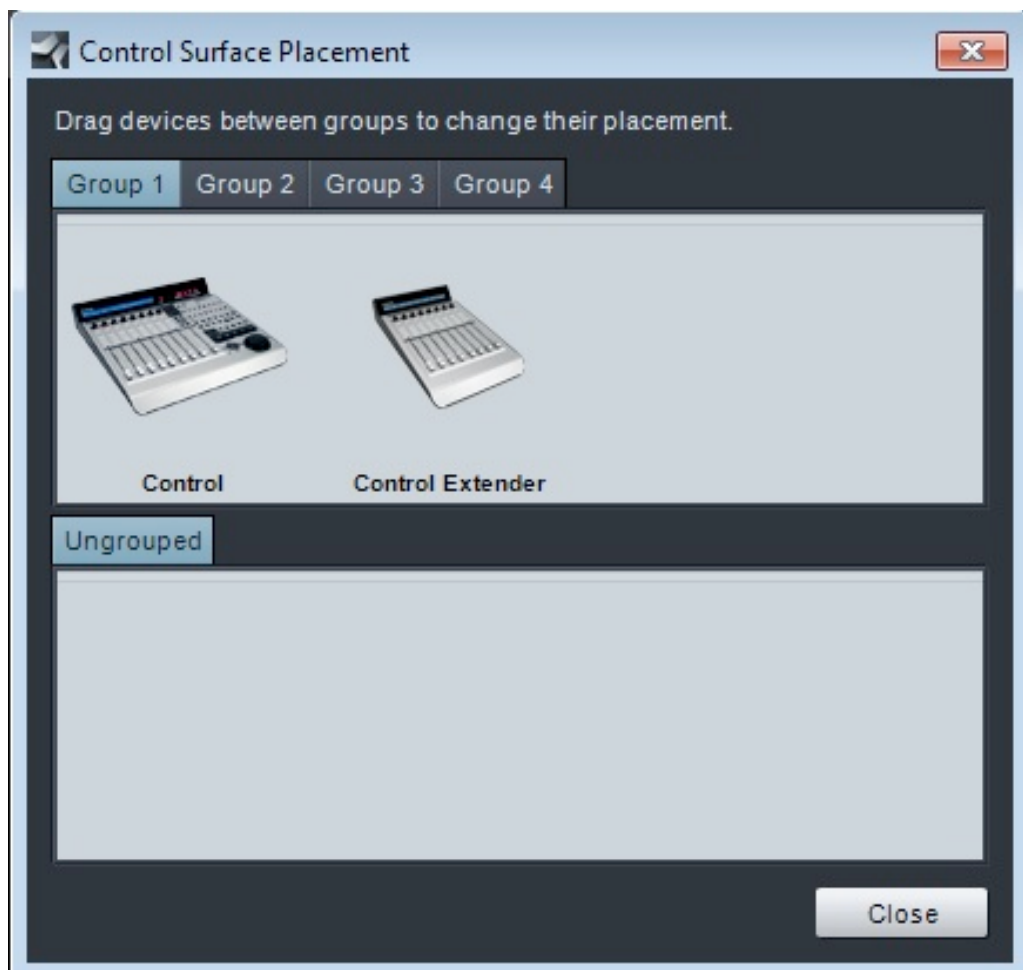


## Device Setup

Control Surfaces are setup in the Studio One > Options...>External Devices menu>Add... In this example we will setup Studio One for operation on DAW layer 1 of Nucleus<sup>2</sup>.

- 1) Setup the first Mackie controller row to 'Receive From' and 'Send To' on ipMIDI Port 1.
- 2) Setup the second MCU controller row to "Receive From' and 'Send to' on ipMIDI Port 2.

## Control Surface Placement



Studio One Mackie Controllers must be assigned to a group in order to work together. To do this go to Placement... in the External Devices menu and drag and drop the devices to the first group (pictured above).

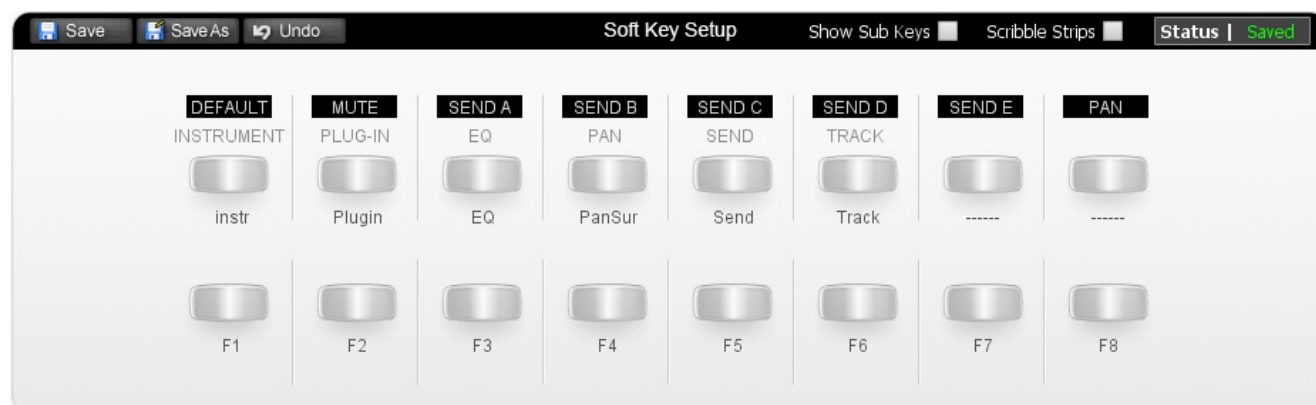
### **Nucleus<sup>2</sup> Setup**

Go to the Nucleus<sup>2</sup> Remote application and ensure the selected profile for DAW 1 is 'Studio One Standard'.

### **Further Information**

For more information on Studio One's MCU implementation and capabilities, please refer to the 'Studio One – Mackie Control Support' document, available from PreSonus.

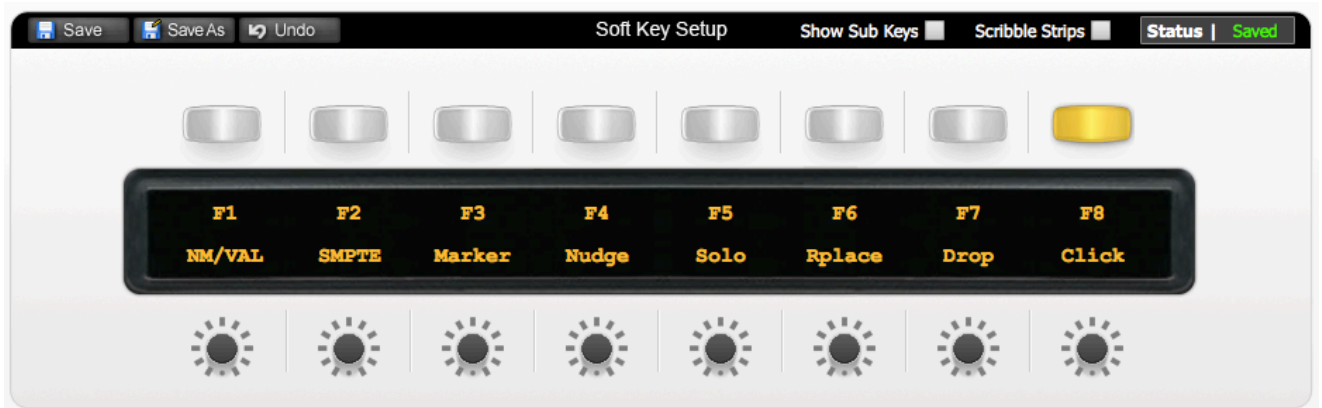
## Default



Above you can see the assignments for Nucleus<sup>2</sup> Default key set. You are in the Default Key Set when the User 1 or User 2 keys are not selected.

Instrument	Brings up instrument assigned to selected track
Plugin	Brings up assigned plugins to selected track
EQ	Bypass effects on each selected channel by pressing the V-Pots
Pan	Shows Pan values on scribble strip via V-Pots
Send	Shows send Levels values on scribble strip via V-Pots
Track	Shows selected track I/O across scribble strip
-----	<i>Unassigned</i>
-----	<i>Unassigned</i>
F1	Opens mixer and shows/hides input I/O levels
F2	Opens/closes Edit window
F3	Opens/closes Mix window
F4	Opens inspector
F5	Opens/closes Effects browser
F6	Opens/closes I/O Browser
F7	Show Channel Editor
F8	Show Sounds

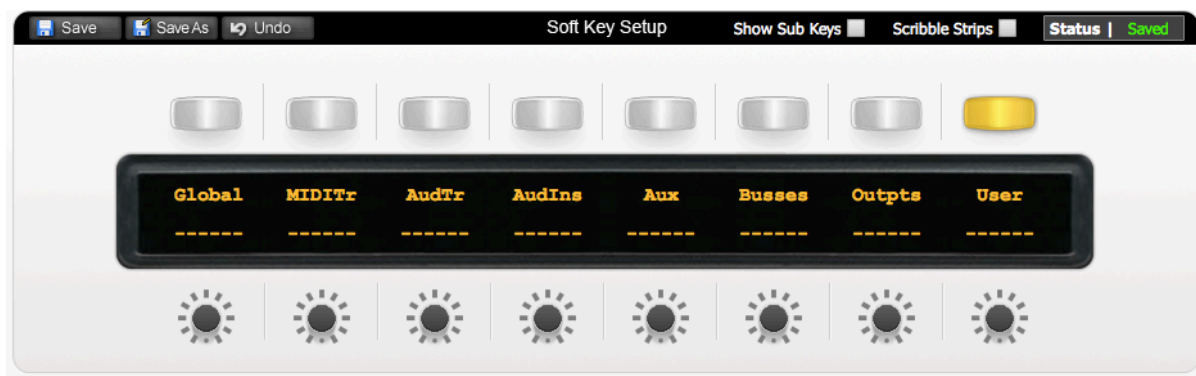
# User 1



Above you can see the assignments for User 1.

F1	Opens mixer and shows/hides input I/O levels
F2	Opens/closes Edit window
F3	Opens/closes Mix window
F4	Opens inspector
F5	Opens/closes Effects browser
F6	Opens/closes I/O Browser
F7	Show Channel Editor
F8	Show Sounds
NM/VAL	Toggles between Names and Values in scribble strip when sends are active
SMPTE	Changes timeline reference
Marker	Puts transport controls into marker mode (<<Previous marker, >> Next marker, 'REC' place marker)
Nudge	N/A
Solo	N/A
Rplace	N/A
Drop	Align Drop-ins
Click	Enable/Disable Metronome

## User 2

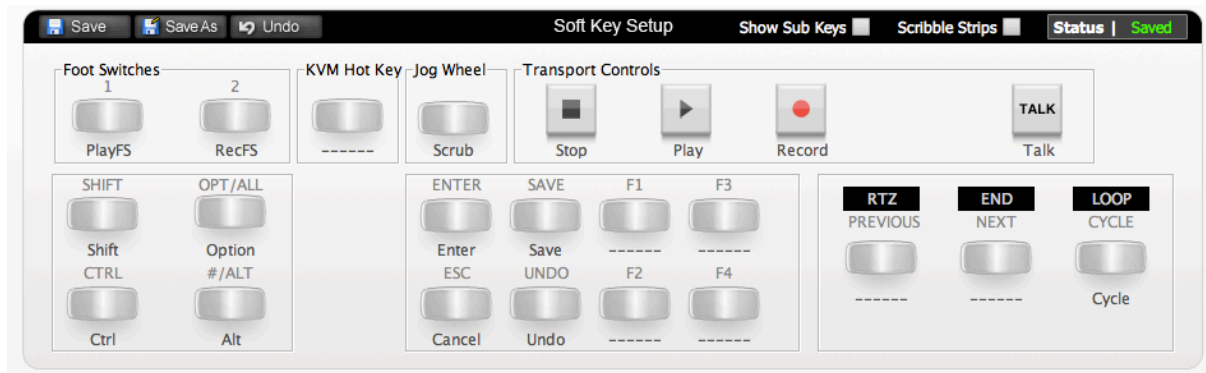


Above you can see the assignments for User 2.

Global	Shows global session tracks
MIDITr	<i>Unassigned</i>
AudTr	Shows all Audio Tracks
AudIns	Shows all AudioIns
Aux	Shows all Auxes
Busses	Shows all Busses
Outputs	Shows all outputs
User	<i>Unassigned</i>



## Transport/Utilities



Above you can see the assignments for the Transport/Utilities Section.

PlayFS	Play command assigned to first footswitch jack
RecFS	Record command assigned to second footswitch jack
Shift	Shift Command (MCU)
Ctrl	Ctrl Command (MCU)
Alt	Alt Command (MCU)
Option	Option Command (MCU)
Enter	Enter
ESC	Escape
Save	Saves session
Undo	Undo
F1	<i>Unassigned</i>
F2	<i>Unassigned</i>
F3	<i>Unassigned</i>
F4	<i>Unassigned</i>
RTZ	<i>Unassigned</i>
END	<i>Unassigned</i>
Loop	Turns Loop playback on/off
Scrub	Sets Jog wheel to Scrub mode



## List of MCU Functions

The Studio One profile contains a number of MCU commands. To help see how we have renamed the commands, see the table below.

DAW CMD/ KEYBOARD SHORTCUT	SOFTKEY LABEL (RE-NAMED)
Instr	Instrument
Plugin	Plugin
EQ	EQ
PanSurround	Pan
SEND	Send
Track	Track
F1	F1
F2	F2
F3	F3
F4	F4
F5	F5
F6	F6
F7	F7
F8	F8
NAME/VALUE	NM/VALUE
SMPTE/Beats	SMPTE
Marker	Marker
Solo	Solo
Replace	Rplace
Drop	Drop
Click	Click
Enter	Enter
Escape	ESC
Loop	Cycle
Option	Option
Control	Ctrl
Alt	Alt
Shift	Shift
Save	Save
Undo	Undo