

Duality SE

Installation Guide

Solid State Logic
S O U N D | | V I S I O N

Duality SE

Installation Guide

82BDYG01C

Version 1.0.1

Solid State Logic

S O U N D | | V I S I O N

Begbroke, Oxford, England, OX5 1RU • +44 (0)1865 842300

320 West 46th Street, 2nd Floor, New York, NY 10036, USA • +1 (1) 212 315 1111

5757 Wilshire Blvd, Suite 401, Los Angeles, CA 90036, USA • +1 (1) 323 549 9090

3-55-14 Sendagaya, Shibuya-Ku, Tokyo 151-0051, Japan • +81 (0)3 5474 1144

7 bis, rue de la Victoire, le Blanc Mesnil, Paris 93150, France • +33 (0)1 48 67 84 85

Via Timavo 34, 20124 Milano, Italy • +39 (0)39 2328 094

Visit SSL at URL: <http://www.solidstatelogic.com>

© Solid State Logic

All Rights reserved under International and Pan-American Copyright Conventions

Duality SE, AWS 924 AWS 948, Matrix, Nucleus, XLogic, X-Rack, X-Desk,

Alpha-Link, Delta-Link, Duende, SuperAnalogue,

Solid State Logic and **SSL** are trademarks of Solid State Logic

All other product names and trademarks are the property of their respective owners

No part of this publication may be reproduced in any form or
by any means, whether mechanical or electronic, without the
written permission of Solid State Logic, Oxford, England

As research and development is a continual process, Solid State Logic reserves the right
to change the features and specifications described herein without notice or obligation

E&OE

SECTION 1 – INTRODUCTION	3
About This Manual	3
Symbols Used	3
Contacting SSL	3
SECTION 2 – SAFETY INFORMATION	4
Definitions	4
Installation Instructions	4
Voltage Selection and Fusing	4
Safety Earth Connection	5
Mains Supply and Phases	5
Mains Isolation and Over-Current Protection	5
Physical Safety	5
CE Certification	6
FCC Certification	6
Instructions for Disposal of WEEE by Users in the EU	6
SECTION 3 – PREPARATION	7
Services Available From SSL	7
Shipment	7
Commissioning	7
Training	7
Factory Warranty	7
Extended Warranty	7
Physical Requirements	8
Console Control Surface Layout	8
Patchbay Options	8
Patchbay Connectors – D25 or DL96	8
Cable Access and Ducting	9
Thermal Considerations	9
Service Access	9
System Options	10
Technical Requirements	11
Sync Source	11
Power Connections	11
UPS Provision	11
Air Conditioning	11
Grounding	11
Workstation interface	11

SECTION 4 – INSTALLATION 13

Unpacking The Console	13
Attaching the legs	13
Removing/fitting the trim	13
Console reassembly	15
Removing Channel Strips and Panels	15
Cable Connections	15
Section Assembly	17
Power Connection	19
PSU Redundant consoles	19
UPS Provision	19
Audio Connections – No Patchbay	21
Channel Connections	21
Centre Section Connectors	21
Audio Connections – With Patchbay	23
Internal Patchbay	23
Remote Patchbay	23
DAW Connection	25
Overview	25
Installing the ipMIDI driver and Logictivity browser	25
Software Installation (Macintosh)	25
Software Installation (PC)	26
Make and configure the network connection	26
Direct Network Connection (Macintosh):	26
Direct Network connection (PC):	29
Enabling ipMIDI on your Duality:	30
Finding a console on the Duality Remote application:	30
Setting workstation(s) to communicate via ipMIDI	31
Network trouble shooting:	35
Large networks and ipMIDI	36
Assigning the Duality SE IP Address:	37
Enabling the Logictivity features on your console	38
Using Physical MIDI Ports to Connect your DAW	39
Trackball output	39
Red Light/Talkback Connector	41
Footswitch Connection	41
TFT Monitor Arm Attachment (option)	43

APPENDICES 44

Appendix A – Specifications	44
Appendix B – Connector Details	45
Appendix C – Connector Pinouts	46
Channel Connectors	46
Centre Section Connectors	47
Appendix D – Patchbay Layouts	49
Appendix E – Console Footprints	54
Appendix F – Environmental Specification	59
Notes Relating to Static and Air Conditioning	59

SECTION 1 – INTRODUCTION

ABOUT THIS MANUAL

The object of this manual is to provide owners and installers of the Solid State Logic (SSL) Duality SE™ console with information in the following areas:

Section 2	SAFETY INFORMATION – Please read this section as it includes important information relating to the electrical supply requirements and to physical safety.
Section 3	PREPARATION – Provides detail about the console and its optional components and also what preparation is necessary relating to the proposed location and any peripheral equipment that may be required. Some items and services will need to be supplied by the facility.
Section 4	INSTALLATION – Provides instructions relating to cabling and connection for the console and its optional items.
Appendices	Specifications, connector pinouts, configuration details and useful guidelines.

The information provided by this manual is relevant to all frame sizes of the Duality console.

SYMBOLS USED



Electrical safety hazard.



General safety warning.



Indicates that it is the responsibility of the facility to provide this item or service.

Important, useful or otherwise noteworthy information will be indicated inside a border



Indicates that additional information may be located on another page or in an Appendix.

CONTACTING SSL

Information relating to support for the Duality console is available on the internet:

www.solid-state-logic.com/music/duality/index.asp

The latest version of this manual can be downloaded from:

<http://www.solid-state-logic.com/support/consoles/duality/documentation.asp>

SECTION 2 – SAFETY INFORMATION

This section contains definitions and warnings, and practical information to ensure a safe working environment. Please take time to read this section before undertaking any installation work.

DEFINITIONS

‘Maintenance’

All maintenance must be carried out by fully trained personnel. Note: It is advisable to observe suitable ESD precautions when maintenance to any part is undertaken.

‘Non-User Adjustments’

Adjustments or alterations to the equipment may affect the performance such that safety and/or international compliance standards may no longer be met. Any such adjustments must therefore only be carried out by fully trained personnel.

‘Users’

This equipment is designed for use solely by engineers and competent operators skilled in the use of professional audio equipment.

‘Environment’

This product is a class A product intended to form an integrated component part of a professional audio recording, mixing, TV, radio broadcast or similar studio wherein it will perform to specification providing that it is installed according to professional practice.



Electrical Safety Warning

When installing or servicing any item of SSL equipment with power applied, when cover panels are removed, HAZARDOUS CONDITIONS CAN EXIST.

These hazards include:

- High voltages
- High energy stored in capacitors
- High currents available from DC power busses
- Hot component surfaces

Any metal jewellery (watches, bracelets, neck-chains and rings) that could inadvertently come into contact with uninsulated parts should always be removed before reaching inside powered equipment.

INSTALLATION INSTRUCTIONS

VOLTAGE SELECTION AND FUSING

The Duality console uses auto-ranging power supplies so voltage range selection is not necessary. Some 3rd party sub-systems however may have user-selectable voltage inlets. Always confirm that the input mains voltage range is set correctly before applying power. Always isolate the mains supply before changing the input range setting.

If it is ever necessary to replace a blown mains fuse, then always use the correct rating and type of replacement. If a correctly rated fuse continues to blow, then a fault exists and the cause should be investigated or the unit returned to SSL for repair/replacement as appropriate.

 Technical specifications can be found in Appendix A on page 44 of this manual.

SAFETY EARTH CONNECTION

Any mains powered item of SSL equipment that is supplied with a 3-core mains lead (whether connectorised or not) should always have the earth wire connected to the mains supply ground. This is the safety earth and grounds the exposed metal parts of the racks and cases and should not be removed for any reason.

MAINS SUPPLY AND PHASES

SSL equipment is designed for connection to single-phase supplies with the Neutral conductor at earth potential – category TN – and is fitted with a protective fuse in the Live conductor only. It is not designed for use with Phase (Live) and Neutral connections reversed or where the Neutral conductor is not at earth potential (TT or IT supplies).

All mains powered assemblies must be connected to the same mains phase.

Mains cables will be coded with either of the following colour schemes:

	1	or	2
LIVE:	Brown		Black
NEUTRAL:	Blue		White
EARTH:	Yellow/Green		Green

MAINS ISOLATION AND OVER-CURRENT PROTECTION

An external disconnect device is required for this equipment; a detachable power cord – as fitted to this equipment – is a suitable disconnect device.

Where a mains plug or appliance coupler is used as the disconnect device, it must remain readily operable.

The power leads must be kept in good condition. If a power cable shows any sign of damage, or if either connector becomes loose, feels warm or appears discoloured then the power lead assembly should be replaced.

An external over-current protection device is required to protect the wiring to this equipment which must be installed according to the current wiring regulations; in certain countries this function is supplied by use of a fused plug.

PHYSICAL SAFETY



Console sections are too heavy for one person to lift.



If any console trim is removed then there may be sharp edges on the exposed frame metalwork.

STANDARDS CONFORMANCE



This apparatus fully conforms with the current protection requirements of the European Community Council directives on EMC and LVD.



The Duality console complies with the UL safety requirements for the USA and Canada; USA standard UL1419 and UL Canadian Standard CAN/CSA-C22.2 No. 60950-1-07, 2nd Edition.

Cables supplied with SSL equipment may be fitted with ferrite rings at either end. These are necessary to comply with European CE regulations and should not be removed. If any console metalwork is modified in any way – such as the addition of holes for custom switches etc. – then the CE certification status of the product may be adversely affected.

FCC CERTIFICATION

The equipment which forms a Duality system has been tested and found to comply with the limits for a Class A digital device, pursuant to part 15 of the FCC Rules. These limits are designed to provide reasonable protection against harmful interference when the equipment is operated in a commercial environment.

This equipment generates, uses and can radiate radio frequency energy and, if not installed and used in accordance with the instruction manual, may cause harmful interference to radio communications. Operation of this equipment in a residential area is likely to cause harmful interference in which case the user will be required to correct the interference at his own expense.

INSTRUCTIONS FOR DISPOSAL OF WEEE BY USERS IN THE EU



The symbol shown here, which is on the product or on its packaging, indicates that this product must not be disposed of with other waste. Instead, it is the user's responsibility to dispose of their waste equipment by handing it over to a designated collection point for recycling of waste electrical and electronic equipment. The separate collection and recycling of your waste equipment at the time of disposal will help to conserve natural resources and ensure that it is recycled in a manner that protects human health and the environment. For more information about where you can drop off your waste equipment for recycling, please contact your local city office, your household waste disposal service or where you purchased the product.

SECTION 3 – PREPARATION

SERVICES AVAILABLE FROM SSL

SHIPMENT


All consoles are available ex-works and can be collected from SSL's headquarters in Begbroke, Oxfordshire, UK.

Packing, crating for airfreight and shipment by specialist carrier can all be arranged at additional cost.

Where delivery is by road and within the EU consoles are normally shipped complete and with legs attached. For all other shipments consoles will be split into 24-channel sections with legs removed; each section will be crated separately. Note that trim parts are not normally removed for shipment so care must be taken to protect the trim during reassembly.

COMMISSIONING

Duality consoles do not include on-site commissioning by an SSL engineer as standard. Commissioning can be requested at the time of purchase at additional cost and is usually expected to take from 2 to 3 days. Consoles above 48 channels and those split for shipment or with corner sections may require an additional 1 day of commissioning time.

 Before the console is installed all control room building work must be completed and the environment **MUST** be clean and free from dust otherwise the warranty will be rendered invalid. Ancillary equipment, such as power distribution and monitoring loudspeakers, should be installed and working prior to the commissioning date.

We would recommend that commissioning is specified for consoles that are split for shipment. Unless commissioning has been included it will be the responsibility of the facility to reconnect the console sections and to re-attach the legs.

You should contact your local SSL office or agent at least four weeks prior to delivery to allocate a commissioning date.

TRAINING

The commissioning time can be extended to allow for up to two days of standard operator training. This is provided at additional cost and is subject to engineer availability.

Maintenance training may also be arranged, at additional cost.

Training should be requested at time of order. For all training we recommend that no more than five persons attend each session. If the use of an interpreter is necessary the training period may need to be extended (at additional cost). Note that travel and subsistence expenses are not normally included. Please contact SSL's Training Department at: support@solid-state-logic.com.

FACTORY WARRANTY

All new systems include a 13 month warranty which commences on the date of shipment. This warranty includes:

- Technical – phone, fax and e-mail – support via your local distributor or office during normal business hours
- Supply of exchange parts*
- Service engineer visits (note that travel and subsistence costs are not covered by the warranty)
- Maintenance software upgrades

** It is not expected that a visit from an SSL engineer will be necessary in the majority of cases where a replacement part is required. Console sub-assemblies are designed to be easily removable to simplify replacement. Please refer to the separate Duality Service Manual, included with the console for additional information.*

EXTENDED WARRANTY

The warranty period may optionally be extended up to a maximum of 5 years. The extended cover available can be specified as 'Parts and Labour' or 'Parts Only'. In either case the travel and subsistence costs are not included.

PHYSICAL REQUIREMENTS


CONSOLE CONTROL SURFACE LAYOUT

- Consoles are available fitted with 24, 48, 72 or 96 input channels. Other channel quantities are not available.
- The centre section can be located to the right of any 24 channel section (ie. not at the left-hand end of the console).
- A 19" section fitted with 12U of racking is available. These sections can be used for rack mounted outboard equipment and are also used if the console is fitted with an internal patchbay – see 'Patchbay Options' below.
- A Producer's Table section is also available. This assembly is 603mm wide and is fitted with a flat, full-depth table. Cable access covers are located at the rear corners of the table.
- Angled corners (12°) can be fitted where the centre section or any 24-channel/rack/table section is joined.

Producer's tables or patch sections cannot be placed directly to the left of the centre section.

The console is a self-contained system; there are no remote power supplies or I/O racks. The frame is not fitted with cooling fans.

Power, audio and control connections are all made to the rear of the console. A cable tray is fitted along the rear lower edge of the frame to support connecting cables. Console legs are hollow and fitted with a removable rear panel so that installation cables can be concealed inside. Corresponding floor ducting will be necessary to take full advantage of this feature. (The 48-channel console is also fitted with a centre leg. This leg is of reduced depth which is insufficient to accommodate the number of cables from a 24-channel bay).

 See Appendix E, page 54, for console footprint drawings.

PATCHBAY OPTIONS

The console may optionally be supplied with a bantam patchbay. Patchbays can be fitted internally to the console or may be remotely mounted into furniture or racks supplied by the facility.

The number of patchrow sections supplied is dependant upon console size; 24 or 48-channel console will require a single 19" section whereas the patch for 72 and 96 channel frames will require 2 off 19" sections.

 See Appendix D, page 49, for patchbay layouts.

Patchbays are assembled using individual 1U Bantam patch modules. For internal patchbays these modules will be wired down to a connector panel mounted at the rear of the patch section legs.

PATCHBAY CONNECTORS – D25 OR DL96

The standard patch internal patch connector panel is fitted with 25-way D-type connectors.

To simplify the integration into a facility with existing cabling, patchbays may optionally be wired out to female DL96 connectors mounted at the rear of the patch section.

Each 1U patchrow is a self-contained connectorised unit. The normalling between each pair of upper and lower jacks is set using normalling links or by internal switches. The normalling on user-option patchrows can therefore be configured as required. Information showing how to set the normalling links is printed on the cover of each patchrow unit and in Appendix D on page 51.

 See page 22 for additional information relating to patchbays.

CABLE ACCESS AND DUCTING

Cable ducting will almost certainly be required between the console and any outboard equipment/patch racks and the recording areas. If a full remote patchbay is being provided then the ducting between the console and the patch racks will need to be of sufficient size to accommodate the following numbers of cables:

- 24 channel remote patch will require 36 off 11mm diameter cables
- 48 channel remote patch will require 54 off 11mm diameter cables
- 72 channel remote patch will require 72 off 11mm diameter cables
- 96 channel remote patch will require 90 off 11mm diameter cables

A cable tray is fitted to the rear of the console to support the cable looms is located directly below the connectors. The tray is provided with holes that coincide with the console leg positions. The console legs are hollow with holes through each foot so that any leads can be concealed within the console legs. It is recommended that the cables are dropped using the nearest leg. Where floor ducting is not available, the lower section of each leg's rear cover is removable to allow cables to exit to the rear.

THERMAL CONSIDERATIONS

The console is cooled by convection from the front inlet (in the knee panels) to the exit at the top of the rear panels. It is essential that these ventilation grills are not obstructed in any way.

Particular care must be taken when considering the installation of studio furniture – such as shelving – across the rear of the console. Sufficient space must be left for the free flow of air from the rear grills, and also above the heatsink fins. Clearance behind the console must not be less than 50mm and clearance above the console not less than 200mm.



The heatsink fins on the console rear panels can reach temperatures of approximately 30 degrees Celsius above ambient room temperature.

SERVICE ACCESS

Although access to all electronic assemblies within the frame is from the front of the console, note that each of the console's channel modules is secured by a screw through its rear panel. It is still necessary therefore, to have access to the rear of the console.

SYSTEM OPTIONS

TR and Automation	Total Recall and Mix Automation are system options available at additional cost. They are normally specified at time of order but can also be installed subsequently.
Speaker shelves	A flat shelf that fits over the top trim of the console. Can be retrofitted to existing consoles without modification.
Additional patchrows	1U connectorised 2 x 48-jack patchrows. Can be specified independently from patchbays. Mating D25–D25 cables are not supplied. DL socket to 3-off 25-way D-type-male adaptor leads are available at extra cost.
DL Connector Panel	The internal patchbay option is wired out as standard to a panel fitted with D25 female connectors. This panel can be replaced with one fitted with DL96 female connectors to simplify the interface to an installation where DL connectors are already in use.
TFT Monitor arm	A vertical adjustable arm fitted to the rear of the console to which one or two LCD monitors may be mounted. Suitable for monitors equipped with the VESA MIS-D 100 mounting. i Page 43.
PSU redundancy	For critical operations, such as live recording or on-air production a dual power supply system can be specified. This option features two independent PSUs per console section, each having an independent mains supply input connector.
Script Tray	A 315mm wide Perspex panel which fits over the channel area leaving the faders free. The tray is fitted with rollers allowing it to be moved sideways across the console.

TECHNICAL REQUIREMENTS

SYNC SOURCE


The Duality console does not require a synchronisation signal.

POWER CONNECTIONS

The console is fitted with auto-sensing power supplies which will function at any voltage from 100 to 240 volts $\pm 10\%$.

Each console is supplied with one IEC mains power lead for every 24 channel bay (the centre section is powered by the bay to its left). A 48ch console is therefore supplied with two power leads (a 72ch console has three and 96ch with four). The leads provided are 2m in length and wires are colour-coded according to the EC standard.


- A separate power outlet for each 24ch section should be provided beneath the console. Power leads included are unterminated at the supply end to facilitate each user's preferred connection method.
- Each power outlet provided should be able to be switched and must be protected by a fuse.
- It is recommended that there be provision for all supply outlets to be switched concurrently so that the console can be switched on or off by a single action.

 To reduce the risk of electric shock, plug each power supply cord into separate branch circuits employing separate service grounds.

Note that consoles fitted with PSU redundancy will require two mains connections for each 24-channel bay.


 Refer to Appendix A, page 44, for console power ratings.

UPS PROVISION

 Where either the primary or backup supply of mains power is provided from an uninterruptable source (UPS) the output waveform of the UPS equipment must be of the sinusoidal variety. Switched or stepped output waveforms may cause damage to the console power supplies so must not be used.

AIR CONDITIONING

The power dissipated by a 48 channel Duality console is approximately 1,540W (2,200W for 72ch and 2,860 for 96ch). When all the studio equipment is taken into consideration, particularly if additional lighting is being installed, the combined heat output could be sufficient to cause the temperature to rise to uncomfortable levels. It is therefore likely that air conditioning will be required.

Please refer to the SSL environmental specifications and the additional note relating to humidity levels when planning an air conditioning system  Appendix F, page 59.

GROUNDING

A standard system should not require any additional grounding over and above that supplied by a correctly installed mains supply. All console metalwork is permanently bonded to mains earth. A permanent earth connection via the mains inlet must be provided.

A console chassis connection is provided adjacent to the XLR input for channel one at the rear of the console.

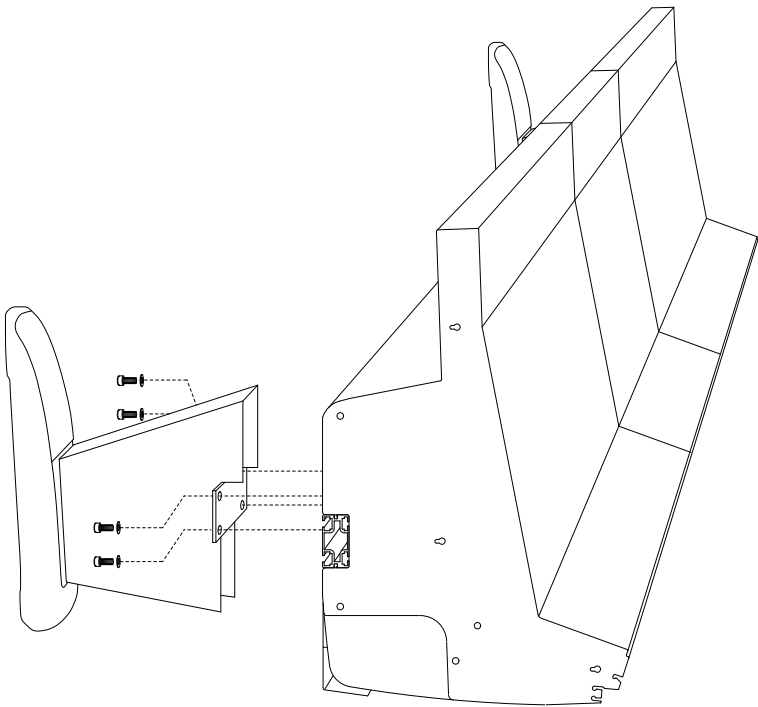
All audio connectors have their screen pins connected directly to the chassis at the point of entry to comply with AES/EBU grounding and EMC standards.

WORKSTATION INTERFACE

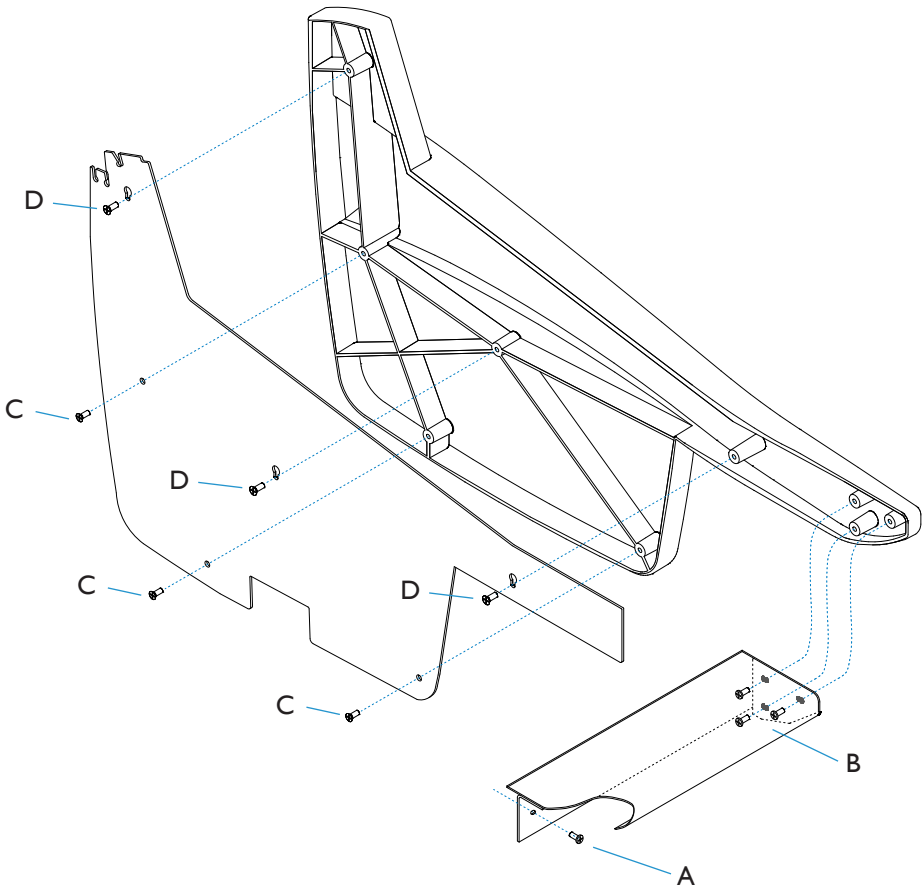
DAW interfacing is available via standard MIDI 5-pin DIN connectors or over ipMIDI.

A built-in trackball is fitted adjacent to the master fader as a pointing device. Trackball output is via a USB-A socket on the centre section rear panel.

LEG ATTACHMENT



END TRIM AND BUFFER ATTACHMENT



SECTION 4 – INSTALLATION

UNPACKING THE CONSOLE

For deliveries by road transport within the EU it is usual that the console will not be split for shipment and the legs will still be attached. For other destinations worldwide the console will be split and the legs will be removed – each section being supplied in a separate wooden crate.

Using a large screwdriver or pry-bar carefully open the crate containing each console section. The crates are not designed to be reusable. With all the crate sides removed there will be sufficient space for a minimum of six people to lift the console sections clear of the crate base.

The console is normally shipped with its trim fitted. Do NOT use any trim part as a lifting point. Particularly, do NOT lift the front of the console using the buffer alone.

ATTACHING THE LEGS



It is recommended that at least four people are available to perform this operation.

The bolts required to attach the legs are shipped in a separate trim kit box. A 6mm hex-key will be needed to tighten the leg bolts. The bolts screw into a threaded insert inside the main supporting beam. There are four bolts per leg.

Unless trollies or stands are available the safest way to attach the legs is for the console to be rolled onto its back. Ensure that ample padding is provided – such as blankets or bubble-wrap – to protect the rear panels (the PSU heatsink fins protrude from the rear of the console and care must be taken not to damage them).

The legs should be positioned so they align with holes in the cable tray – legs are hollow so that cables can be routed inside. Refer to Appendix E for the correct positioning of each console leg.

REMOVING/FITTING THE TRIM

If it is necessary to remove the trim sections – to manoeuvre the console or to adjoin existing furniture – then please refer to the following information and the illustration shown on the facing page. Note that it will be necessary to remove audio channel modules to gain access to some trim fixing screws.

FRONT BUFFER

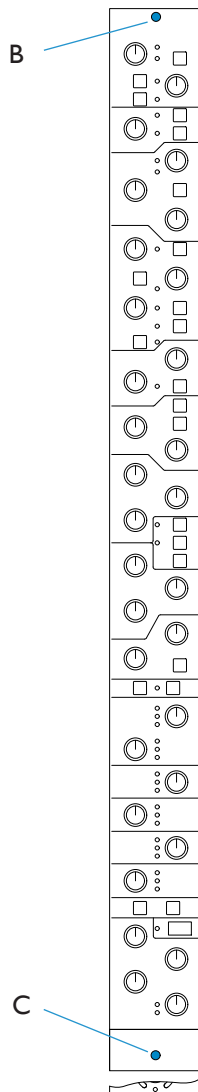
The front buffer sections are secured by pan-head screws [A] which locate through the buffer into the front beam of the console – four screws are used for each 24 channel bay and two screws for the centre section. Where a buffer meets an end trim there are an additional three screws [B] fixed into the trim. Adjacent buffer sections are joined using three screws and M6 nuts. All the fixings are accessed from beneath the buffer.

END TRIM

Each of the end trims is secured in three stages Firstly, three Posi-head screws [C] through the profile (these screws are directly accessible). Secondly, three pan-head screws [B] through the front buffer (visible from beneath the buffer). Thirdly, the side trim will now be secured by three more screws [D]. These screws need to be loosened but may not need to be removed completely as the corresponding holes are widened at the top. Lifting the trim by approximately 20mm should allow it to pull free although it may be easier to remove these screws completely.

TOP TRIM

The top trim for each bay is constructed in two parts: a rear support and a front hinged section. Under most circumstances access for servicing can be gained by simply hinging up the front section. This is a push fit over the meter panels and can be opened by gently pulling upwards along its front edge. The rear fixed section of the trim is also a push fit over the profiles but is also screwed to the console rear panels. This section can be removed by undoing the screws and then by pulling upwards – note, this is normally a much firmer fit.

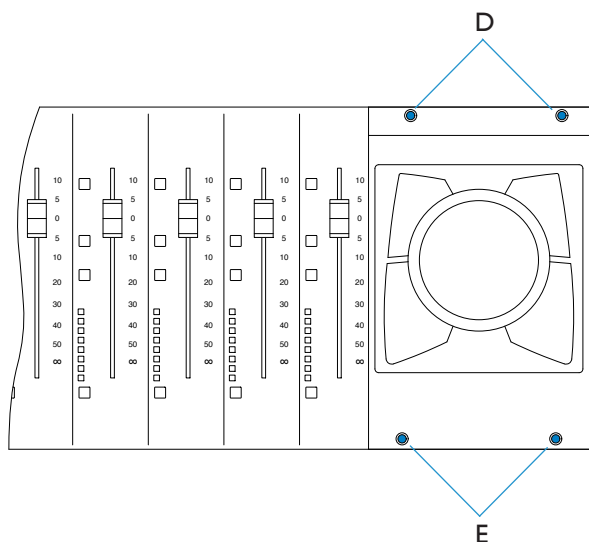
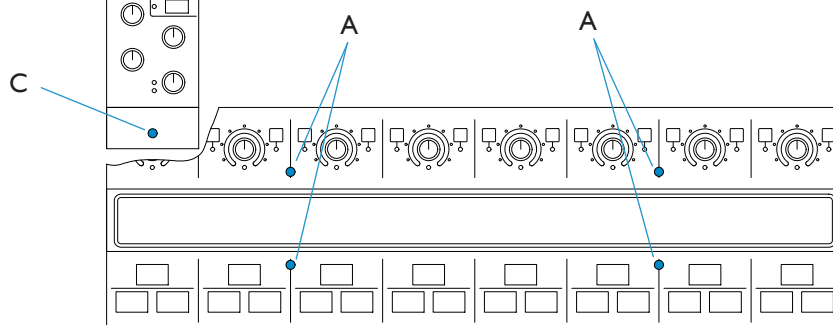


CHANNEL STRIP REMOVAL

1. Remove Solo & Cut panel (see below).
2. Remove 1 x M3 hex-head front panel screw [B] from top of module. Screw module puller tool into threaded hole.
3. Remove 1 x M3 cross-head screw [C] from bottom of module (beneath Solo Tile).
4. Remove 1 x M3 cross head screw from rear panel (above XLR input socket).
5. Pull module upwards from bottom edge using hole in lower edge and guide with puller at top.

SOLO AND CUT PANEL REMOVAL

1. Remove 4 x M3 hex-head screws [A]
2. Lift panel up from ends



TRACKBALL PANEL REMOVAL

1. lift the centre section magnetic scribble strip to reveal the screws [D].
2. Remove the centre section front buffer (p.13) to reveal the screws [E].
3. Lift trackball assembly up and to the left – caution: the track ball is not captive.

CONSOLE REASSEMBLY


In certain cases – except for smaller frames and some deliveries by road within the EU – consoles will be split for shipment. Splits will be at each 24-channel bay section – note that the centre section must remain connected to the 24-channel bay to its left. Corner sections are always removed before shipment. Unless commissioning by SSL has been arranged the client will need to reassemble the console on site.

A split point features two 3mm profiles held together by 9 off M3.5 screws (called ‘stitching’ screws). The console beam is also split and is joined and strengthened by using two insert bars and a support plate held in place by eight M10 bolts – See the diagram on page 16 for the mechanical assembly detail.

In addition to the mechanical split, three audio and one data cable will need to be re-connected.

To gain access to the stitching screws and the data connectors it will be necessary to raise the top trim and remove 2 or 3 channel strips from either side of the split. If the split is to the right of the centre section then the track-ball panel will need to be removed. The channel meter panel will also need to be tilted forward in order to reconnect its data lead.

REMOVING CHANNEL STRIPS AND PANELS

 The console **MUST** be switched off and every mains input leads disconnected before any covers or panels are removed.

Tools required to remove channel and centre section panels are as follows:

- 2.5mm hex driver *For visible front panel screws*
- 1pt cross-head driver *For rear panel screws and hidden screws*
- Module puller tool *For lifting the top edge of channel strips and cassettes*

Where two adjacent channel bays are being joined it is recommended that three modules are removed from either side of the split. This should be sufficient to gain access to the stitching screws and the bus ribbon connectors.

It should not be necessary to remove centre section panels as the stitching screws should have been inserted from the right-hand (ie. module) side of the split. The track-ball will need to be removed to gain access to the screws in the fader area.

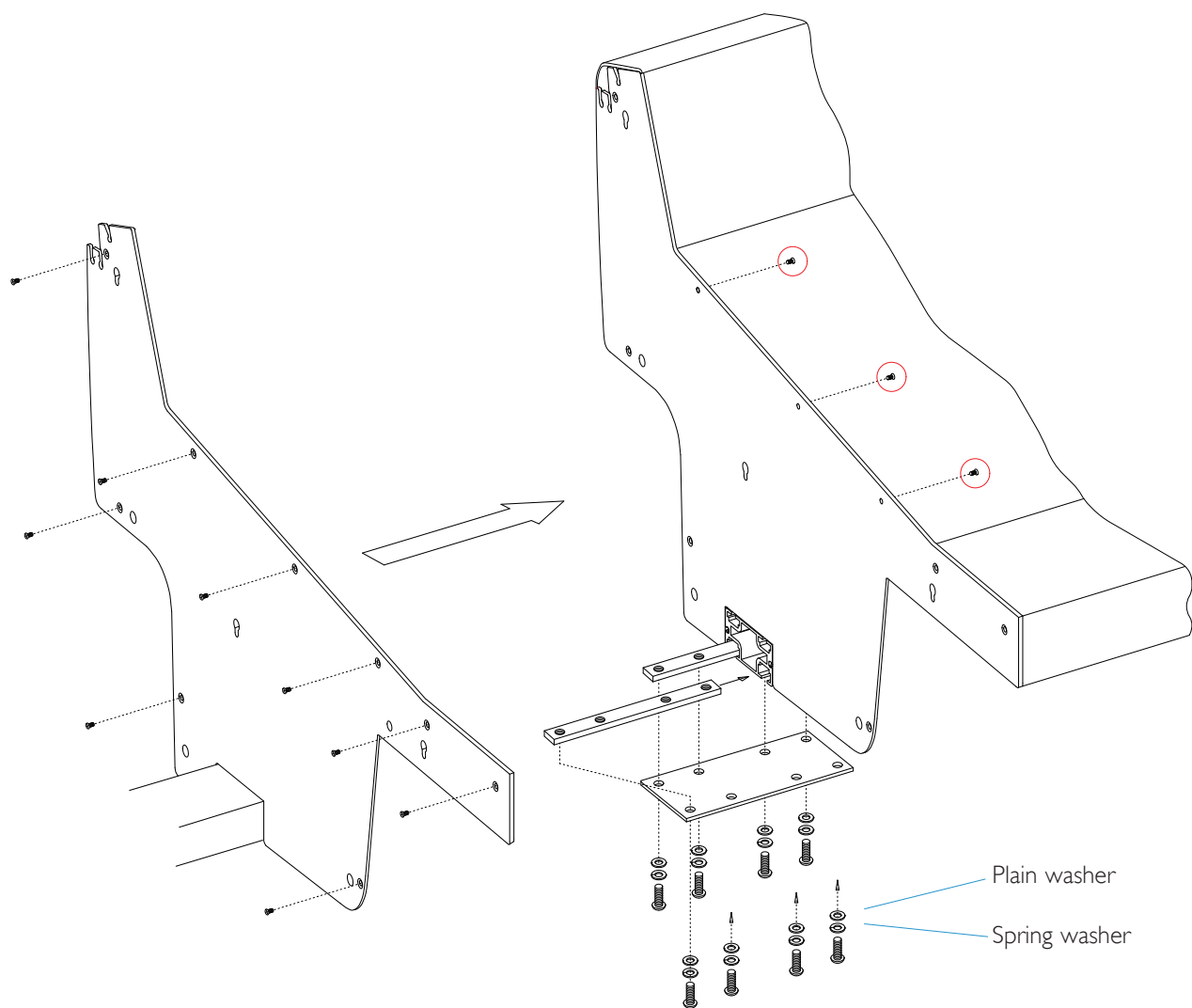
Refer to the diagrams opposite for panel removal instructions and to page 16 for locations of the stitching screws.

CABLE CONNECTIONS

Once the frame has been mechanically joined (see following page) there are four cables that need to be re-connected.

- Three ribbon connectors are used to link the channel strip buscards between 24ch bays. These are located at the left-hand edge of each channel bay. Once the bays are joined, the two 50-way and one 40-way connectors should be in the correct location and will simply require pressing into their corresponding sockets (PL1A, PL2A and PL3A).
- One meter lead will also need to be re-connected behind the 24ch wide meter panel. Instructions are as follows:
 1. Hinge up the front section of the channel bay top trim.
 2. Remove six off M3 x 8mm cross head screws from the top of the meter panel.
 3. Gently pull upwards on the meter panel at each edge until its lower edge is free – the panel does not need to be removed completely and can just be tilted forward to gain access to the connector.
 4. Locate the meter lead and its corresponding socket. This will be found on the meter drive card assembly in the middle of the meter panel, the socket is at the bottom edge near the centre of the drive card, and is labelled PL3.
 5. Route the cable through the penthouse section of the frame and connect to socket PL3 on the drive card.

ASSEMBLY OF ADJACENT CONSOLE BAYS



○ Three screws fitted from the right-hand side if the split is to the right of the centre section.

SECTION ASSEMBLY

Before commencing mechanical assembly all necessary modules or panels should be removed. The top trim sections should also be hinged open.

Make sure that at least six people are available before attempting to move console sections. Ensure all parts are supported adequately – a strong stand (such as a stool or trolley) of approximately 420mm high will be extremely useful to support the un-supported end of the console whilst the sections are aligned.

Before the sections can be joined, they must be horizontal and at the same height.

Locate the insert parts needed for reassembly of the beam. (These parts will usually be assembled and slid into one of the beam sections – loosening all eight of the M10 bolts will allow the plate and inserts to slide along to the beam joint).

Position the plate and inserts at the joint so that approximately half of the insert is visible. Hand tighten the bolts.

Align the two console sections so that the beam inserts are in the correct position on the opposing beam. It may be necessary to remove four of the bolts. If particularly awkward then remove all eight bolts and the securing plate.

Carefully push the two console sections together. If the sections are aligned correctly, the inserts should slide into place with minimal force – they are not a tight fit.



Take particular care that the buscard linking ribbons and the meter cable are not snagged or crushed when positioning the frame sections.

Fit any remaining M10 bolts and hand-tighten checking that the inserts are still positioned with half in each section. Tighten sufficiently so that the joint is secure and the sections will not slide apart. Some adjustment may still be necessary until all screws are in place.

Although stitching screws can be fitted from either side of the profile they are usually inserted through the left profile to screw into the right-hand side. The exception will be at the centre-section split where three of the screws are inserted from, the right – thus eliminating the need to remove master section panels.

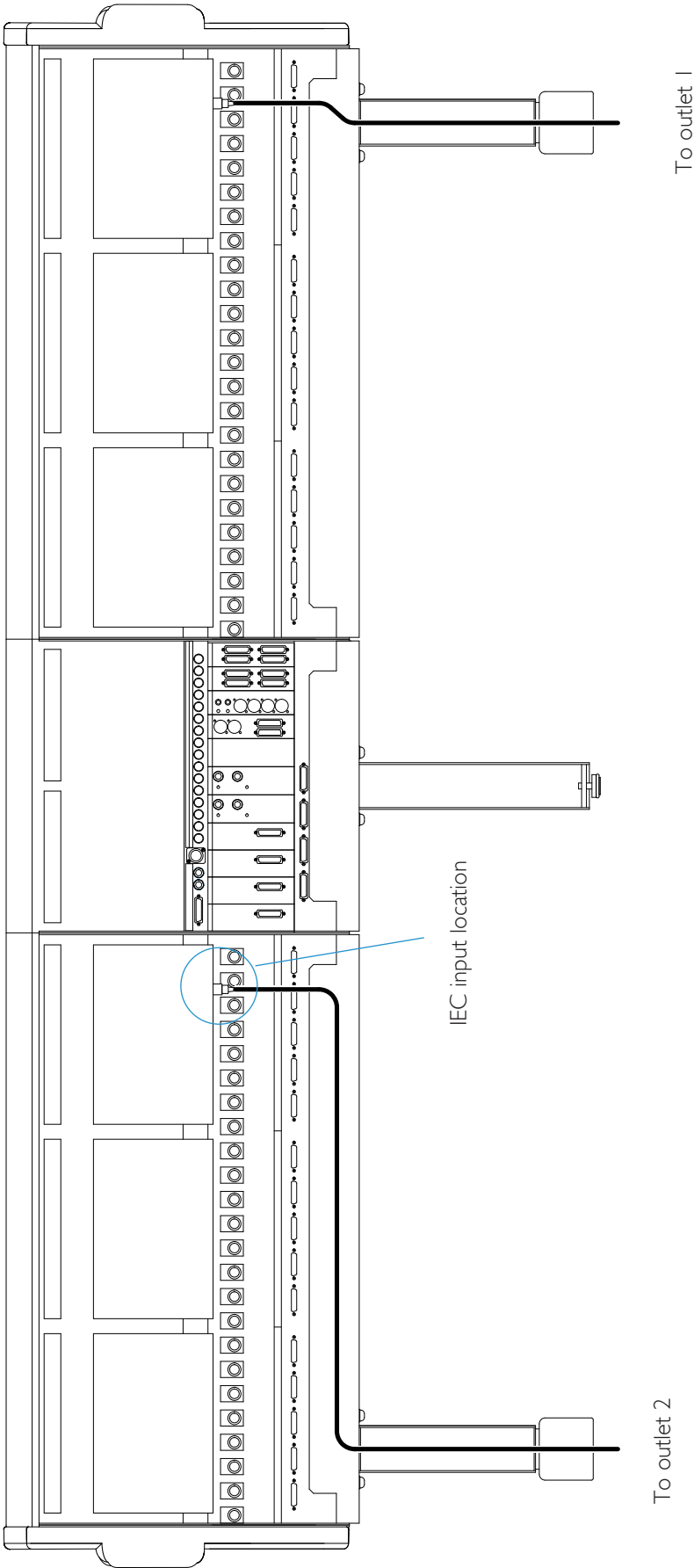
Before inserting the nine off 'stitching' screws check that the profiles are touching all round with no gaps; do not use the M3.5 screws to pull the two sections together

Insert the nine off M3.5 'stitching' screws through the LH profile and loosely fix into the corresponding holes in the RH profile. Secure each screw by a few turns only until all nine are located.

Gradually tighten the screws a few turns at a time checking that the profile edges are correctly aligned. Only tighten the screws completely once alignment is correct.

Now fully tighten each of the M10 bolts in the beam plate.

POWER CONNECTIONS – 48 CHANNEL CONSOLE



POWER CONNECTION

Power supplies for the console are fitted to every bay of 24 channels. The centre section does not have its own supply as it receives its power from the bay to its left.

A 24 channel console has a single power input, a 48 channel console will have two input leads, a 72 channel console will have three and a 96 channels console has four. The leads supplied are 2m.

It is important that all of the mains leads are connected to the same supply source so that they are all switched concurrently. Power input to each section is via IEC plug. Refer to the power provision notes on page 11.

1. Locate the two (three or four) 2m IEC input leads and attach to the console in the locations indicated opposite.
2. Run each mains lead along the underside of the cable trays and secure with cable ties (holes are provided) – this will keep the power cables separated from the audio cables.
3. Route the lead for each section down the middle of the nearest console leg.
4. Terminate each lead at a suitable outlet located near or beneath the console legs.



THE MAINS SAFETY EARTH MUST BE CONNECTED AT EACH POWER OUTLET.



THE POWER SOURCES MUST NOT BE FROM DIFFERENT PHASES OF A 3-PHASE SUPPLY.

PSU REDUNDANT CONSOLES

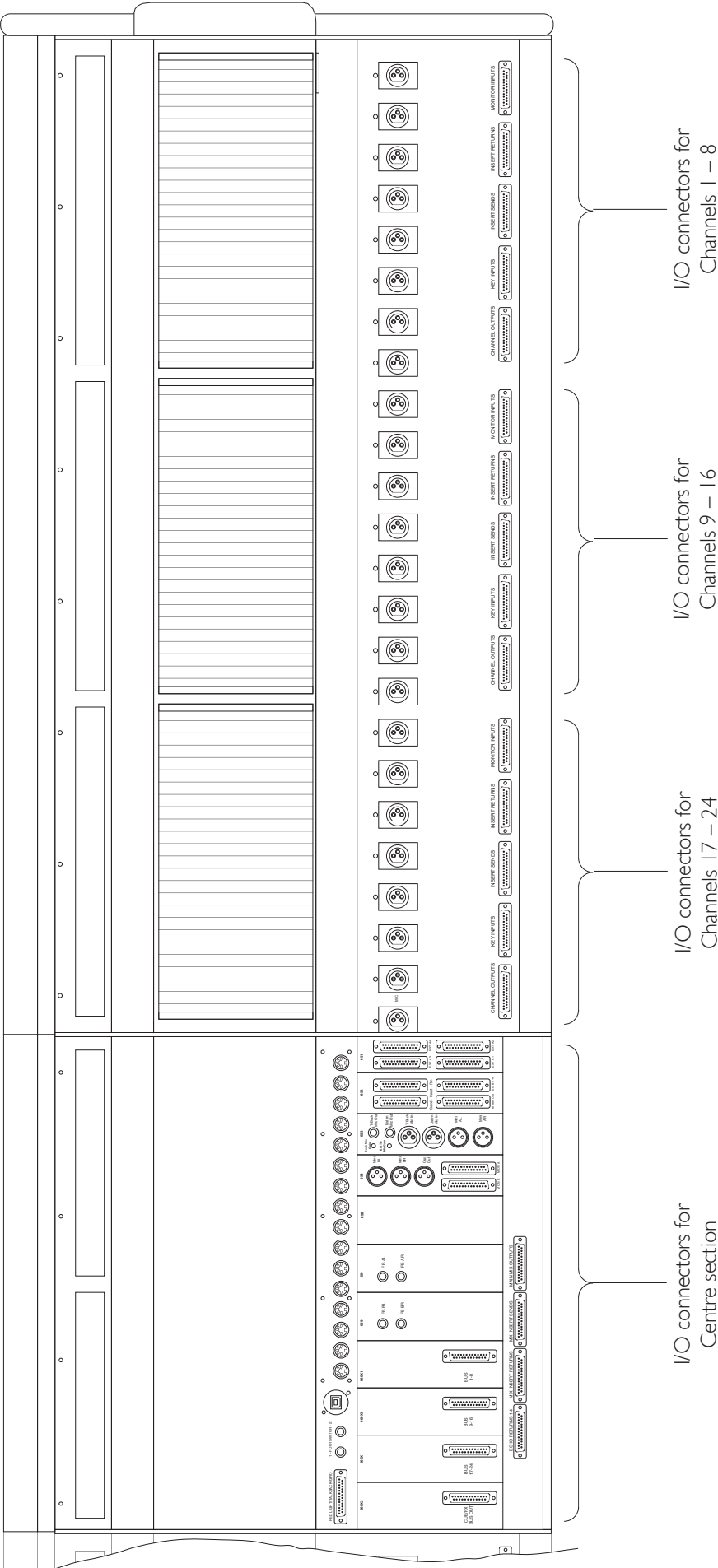
Consoles fitted with redundant power supplies have two separate PSU systems fitted to each channel bay; each console section will therefore require a separate main and backup supply outlet. For resilient redundancy It is recommended that the backup supply outlets should be fed from an uninterruptable source. (See following note.)

UPS PROVISION



Where either the primary or backup supply of mains power is provided from an uninterruptable source (UPS) the output waveform of the UPS equipment must be of the sinusoidal variety. Switched or stepped output waveforms may cause damage to the console power supplies so must not be used.

CONSOLE REAR VIEW – AUDIO CONNECTIONS
24-CHANNEL BAY



AUDIO CONNECTIONS – NO PATCHBAY

All audio connections are made at the rear of the console. The majority of line level input and output connections are made using high quality 25-pin D-type female connectors – some ancillary circuits are accessed using 1/4" jack and XLRs. All Microphone inputs are via 3-pin XLR female connectors.

- All audio circuits are balanced.
- All cable screen pins are connected to the console chassis.
- All XLRs are wired using pin 2 as the non-inverting leg ('2-hot').
- The binding posts for the 25-way D-type connectors use the UNC 4-40 thread.

The audio cabling for the channel bays can be routed down the back of the nearest leg; it is possible, with care, to locate all cabling for a 48-channel console within one leg. The centre section cabling can be routed down its own leg or split between the nearest channel bays.

 Refer to Appendix C, page 46, for connector pinouts.

CHANNEL CONNECTIONS

The I/O connectors for each 24-channel bay are arranged into three repeating 8-channel groups. Each group consists of five D25 and 8 XLR female connectors.

The connectors for each group are allocated as follows:

Channel Outputs	D25 female	Channels direct outputs
Key Input	D25 female	External access to the channel dynamics sidechain
Insert Send	D25 female	
Insert Return	D25 female	
Monitor Input	D25 female	Line level input to channel/monitor path
Channel Input	XLR 3-pin Female (x8)	Microphone or 2nd Line level input

CENTRE SECTION CONNECTORS

The connectors are allocated as follows:

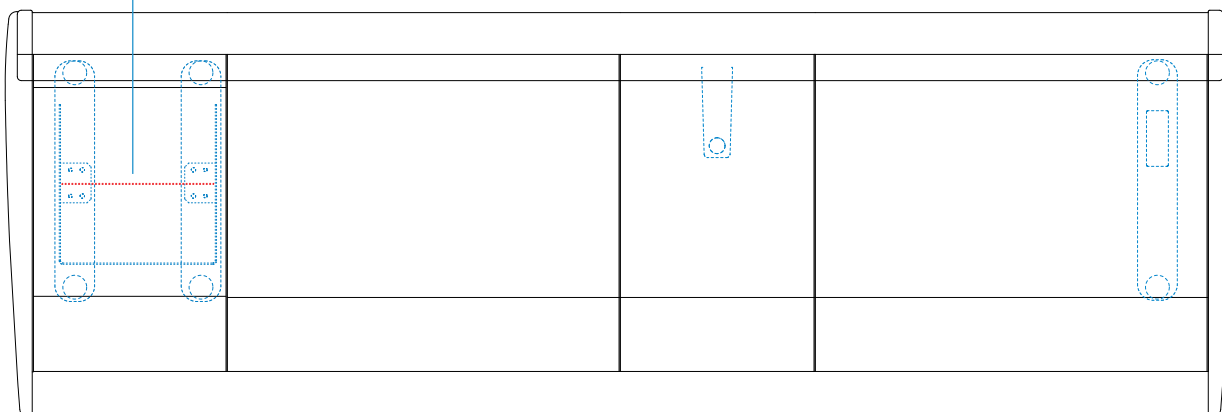
Ext A I [2,3,4]	D25 female (x4)	Four independent 5.1 inputs
Ext B	D25 female	Four independent stereo inputs
Insert Send/Return	D25 female (x2)	5.1 + Lt/Rt Monitor insert point
Meter Out	D25 female	Main 5.1 + Solo meter feeds
Mon A	D25 female	Main 5.1 + Mini-A loudspeaker feeds*
Mon B	D25 female	Alt 5.1 + Mini-B loudspeaker feeds*
Bus 1–8 [9/16, 17/24]	D25 female (x3)	24 track outputs
Cue/FX Bus Out	D25 female	2 stereo and 4 mono feeds
Echo Returns 1–4	D25 female	2 stereo inputs
Mix Insert send/return	D25 female (x2)	5.1 + stereo mix insert point
Main Mix Outputs	D25 female	5.1 + stereo mix out
F/B A and B LR	1/4" balanced jack (x4)	Foldback A and B sends
Mini A and Mini B	XLR 3-pin male (x4)	Mini LS A & B sends*
Osc out	XLR 3-pin male (x4)	Oscillator feed
Listen/TB Mic in	XLR 3-pin Female (x2)	Listen and Talkback Microphone inputs
Listen/TB Mic out	1/4" balanced jack (x2)	Listen and Talkback Microphone feeds

*Mini A and B feeds are duplicated on D25 and XLR connectors.

LOCATION OF INTERNAL PATCH CONNECTOR PANEL

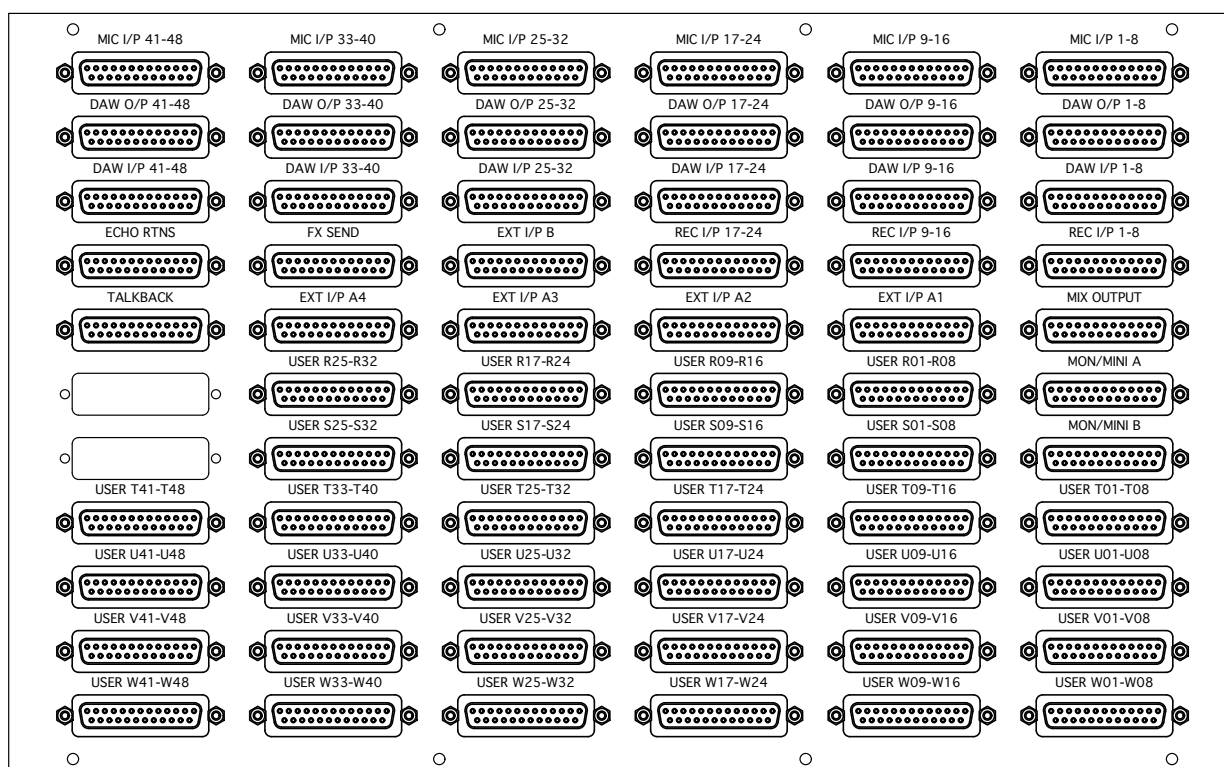
Internal Connector Panel
(Connectors face towards rear)

48 channel Duality



Patchbay section may be located at either end of the console

D25 CONNECTOR PANEL



AUDIO CONNECTIONS – WITH PATCHBAY

Consoles may be specified to include either an internal or an external bantam jack patchbay.
Patchrows supplied are 1U enclosed units fitted with 12 off 25-way D-type female connectors.

INTERNAL PATCHBAY

Internal patchbays are installed into one or two 12U 19” rack sections.

24 and 48 channel consoles use a single 19” section; 72 and 96 channel consoles will require 2 x 19” sections.

The internal patch section features a wider double leg and includes a shielded cover for cable protection. A connector panel is fitted at the rear of the double leg to provide access to all user inputs and outputs. Internal cabling between the console, patchrows and the connector panel is provided.

The connectors on the panel are 25-way D-type Female and binding posts use the UNC 4-40 thread.

A trim panel is supplied for the rear of the patch leg to conceal the connector panel and the installation cables.

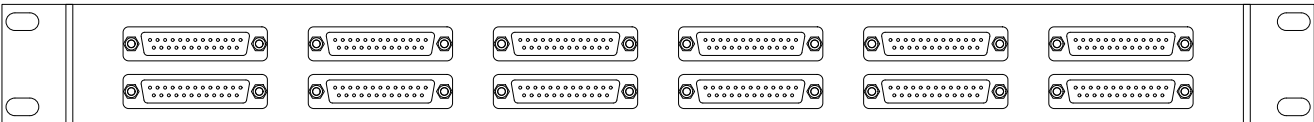
REMOTE PATCHBAY

The audio cabling for the channel bays can be routed down the back of the nearest leg; it is possible, with care, to locate all cabling for a 48-channel console within one leg. The centre section cabling can be routed down its own leg or split between the nearest channel bays.

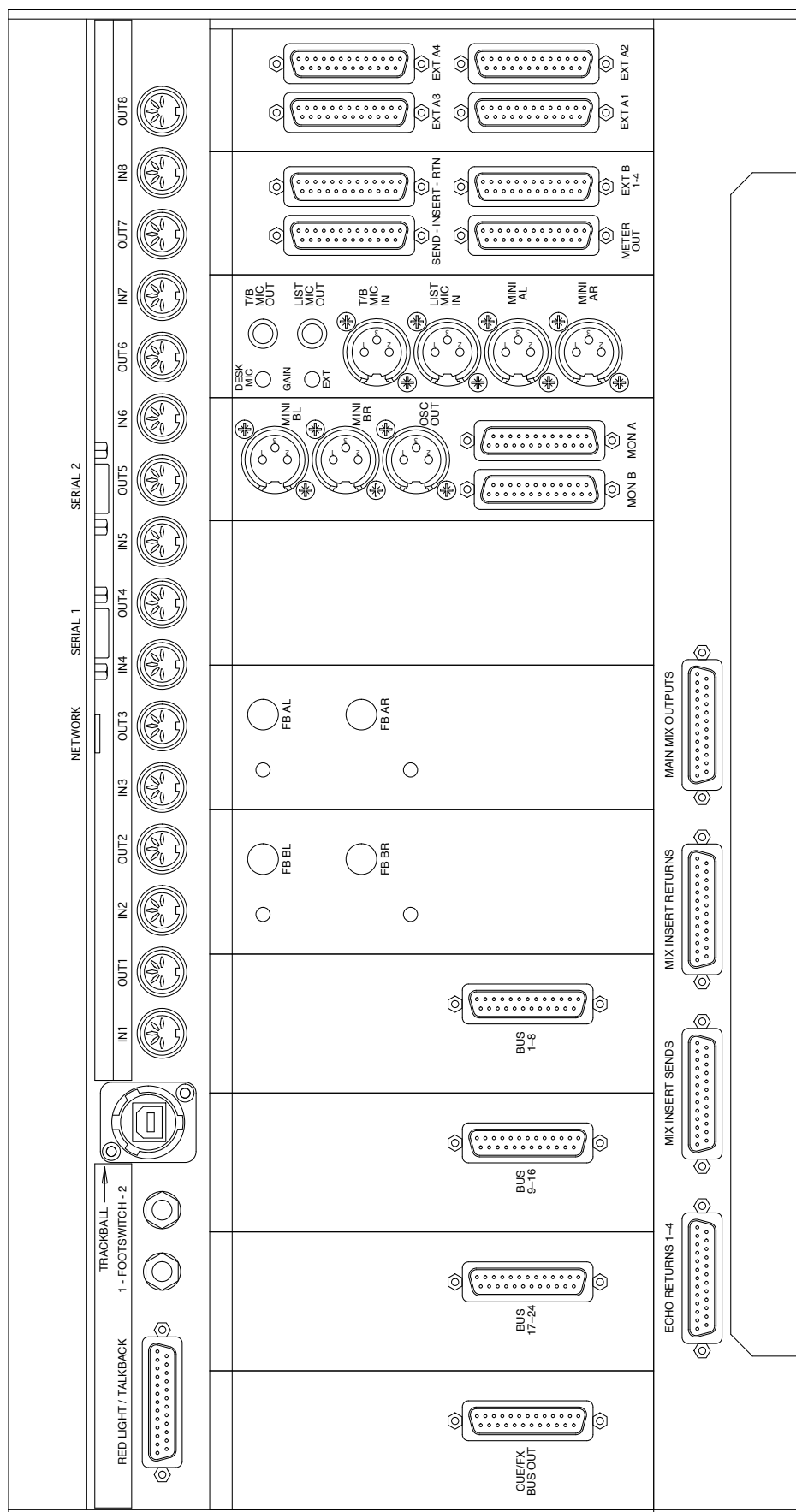
 Refer to Appendix C, page 46, for the connector pinouts.

 Refer to Appendix D, page 49, for the patchbay layouts.

PATCHROW REAR PANEL



CENTRE SECTION DAW AND NETWORK CONNECTIONS



DAW CONNECTION

The Duality SE console communicates with a DAW directly via Ethernet or via six MIDI ports. To use the Ethernet option a third party ipMIDI software driver must be installed on the DAW computer. Using these methods of communication allows the Duality SE to be used with a wide variety of DAW applications on a number of different platforms.

The Duality SE uses either the Mackie Control Universal (MCU) or the 'HUI' compatible protocols so any DAW program that can be configured to use multiple HUI or MCU devices is able to access the full power of the Duality SE.

Please refer to your DAW manual for details on how to configure the DAW application for Duality SE under Mackie or HUI control.

OVERVIEW

In normal operation the Duality uses an Ethernet connection for DAW control and the SSL Duality Remote for session management. The following section describes how to download and install the ipMIDI driver and Duality Remote on Macintosh and PC.

Optionally the Duality can use a standard MIDI connection between the Duality SE console and your DAW using a multi port MIDI interface. In this mode only one DAW layer can be configured. The console communicates with the DAW via the MIDI ports located on the rear of the console; details are provided on page 39.

INSTALLING THE IPMIDI DRIVER AND LOGICIVITY BROWSER

Download on to your workstation computer either the DualitySE_Mac_Support.dmg disk image (Macintosh) or the DualitySE_Win_Support.zip file (windows). These contain the Duality Remote and ipMIDI applications and the latest version of the installation instructions:

<http://www.solidstatelogic.com/support/conssoles/duality/downloads.asp>

System requirements for your workstation computer:

- Duality Remote is a Java application. It will run under Java Version 5 or higher.
- ipMIDI is compatible with Windows 2000 (maximum 9 MIDI ports), XP, Vista , 7 and Macintosh OSX 10.4 and above.

On larger networks or multi-console installations the ipMIDI data might cause networks to run slowly. In these instances it would be advantageous to install a managed switch to isolate the console network from the company's TCP/IP network. Refer to page 36 for additional information.

SOFTWARE INSTALLATION (MACINTOSH)

Mount the DualitySE_Mac_Support.dmg disk image and open it.

Duality Remote: Drag the enclosed Duality Remote application to the Applications folder, then to the Dock or any other convenient location.

ipMIDI: Double click on the ipMIDI.pkg file to run the installation program. Note that you will be asked to log out and in again once you have completed the installation. Once you have logged back in open Audio MIDI Setup and double click on the ipMIDI icon. Set the number of MIDI ports to 16 in the resulting pop-up.

If you are upgrading an older copy of ipMIDI you must uninstall it before running the installer. To uninstall ipMIDI simply delete: </Library/Audio/MIDI Drivers/ipMIDIDriver.bundle>. You should empty the Trash after deleting the bundle file before running the installer.

SOFTWARE INSTALLATION (PC)

Open the DualitySE_Win_Support.zip archive.

Duality Remote: Copy the DualityRemote.exe file to the Program Files folder (or any other convenient location) then create a shortcut to it on your desktop and/or task bar. Double clicking on this will launch the Duality Remote program.

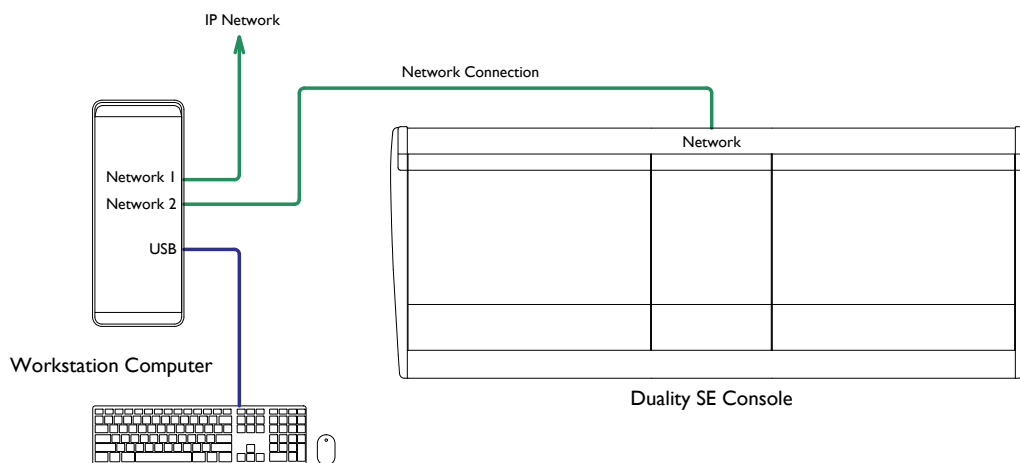
ipMIDI: Run the setupipmidi_1.6.exe application (note that the last part of the name may change depending on the version you are installing) by double clicking on it. Note that you will have to restart the computer at the end of the setup process. Once the computer has restarted right click on the ipMIDI icon in the task bar and set the number of MIDI ports to 16 in the resulting pop-up.

If you are upgrading an older copy of ipMIDI you must uninstall it (using Add/Remove programs) before running the installer.

MAKE AND CONFIGURE THE NETWORK CONNECTION

The Duality Logictivity software is designed to communicate with your workstation over Ethernet using the ipMIDI driver to emulate a multiport MIDI interface. The ipMIDI driver enables your workstation to send and receive MIDI control data via a network connection. Using Ethernet ensures the fastest possible communication between your workstation computer and Duality. This network connection is essential if you wish to benefit from all of the new SE features.

The standard installation uses an RJ45 crossover network cable (not supplied) to connect the console's network connector directly to a separate network port on your workstation computer using the console's default fixed IP address of 192.168.1.2. Note that many computer adaptor cards will autosense a direct connection negating the need for a crossover cable. If you are unsure whether your workstation computer's network adapter has this functionality, please use a crossover rather than a pin-to-pin cable.



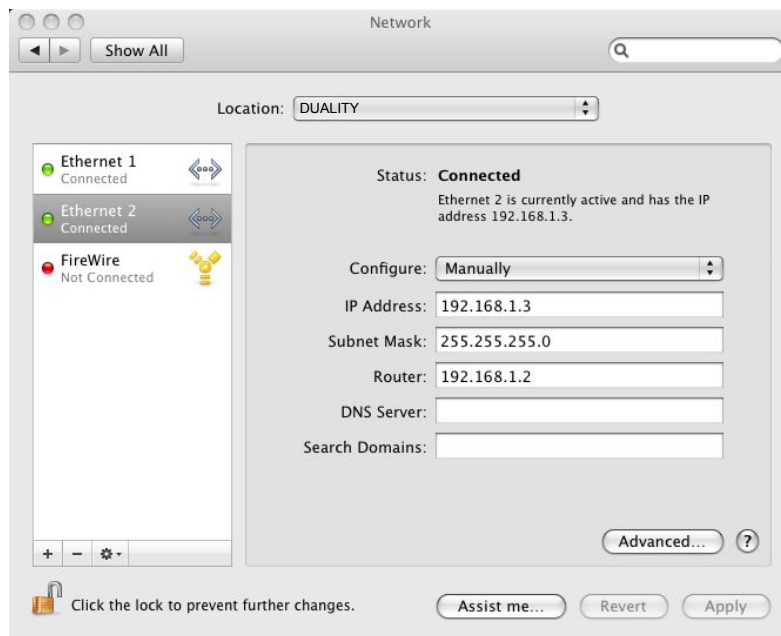
It is possible to connect Duality to a larger network which incorporates multiple computers and to enable dynamic (DHCP) addressing. These configurations need special consideration. Please see the notes at the end of these instructions for details.

DIRECT NETWORK CONNECTION (MACINTOSH):

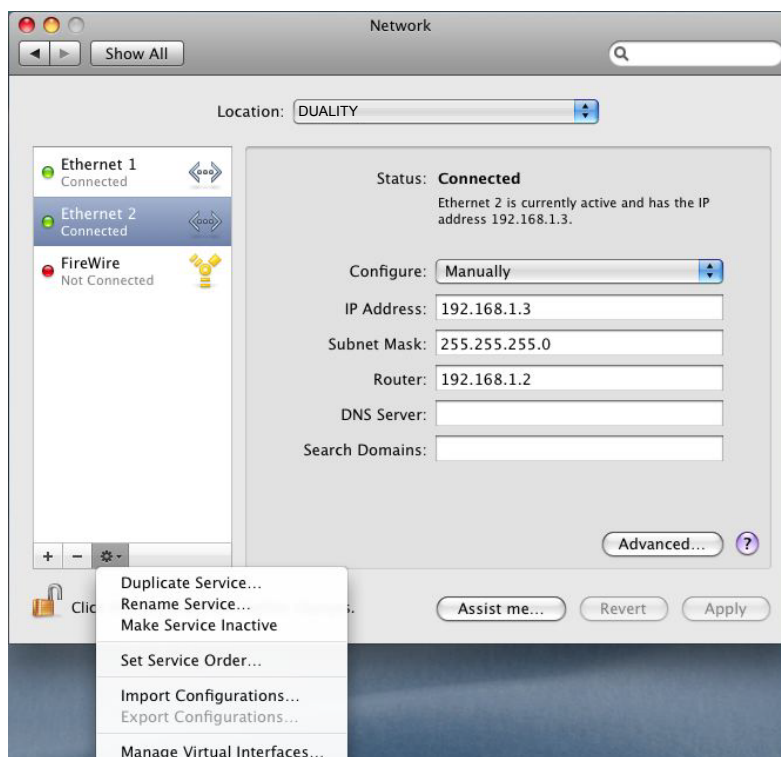
Please note that currently OS X does not allow two ports to be used for IP traffic. As such, the connection to your main network will not be available while the Duality is connected.

To simplify the process of switching between networks, it is recommended that you create a new network Location for the Duality in network preferences. Another Location ('internet' for example) could be created to enable connection to the internet. This would use the network settings provided by your Internet Service Provider or network administrator. You can easily switch between network Locations by going to the Apple Menu and scrolling down to Location.

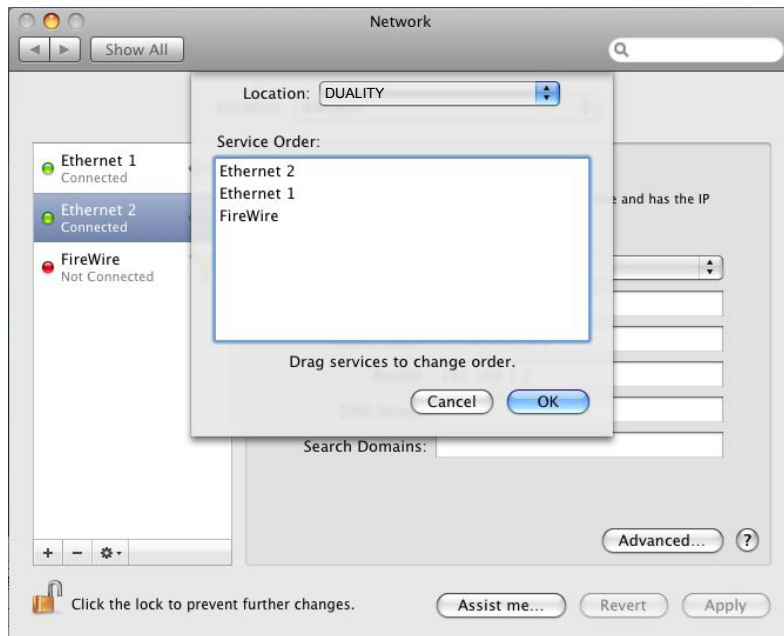
- Using an RJ45 cable, make a direct network connection between the network port on your Duality to a network port on your workstation computer and check that the IP address is set to **FIXED** in the console's **SSL > MISC > NET** menu.
- Open System Preferences and click on 'Network'. Create a new location by clicking where it says 'Location', scroll down to 'Edit Locations' and click the '+' sign. Name the new location Duality.
- Next, select the Ethernet port which is connected your Duality and configure as shown below:



- If your Macintosh features multiple network ports, you should set the priority of these so that the Ethernet port connected to your Duality is at the top of the list. To do this, choose 'Set Service Order' from the Actions pop-up menu:



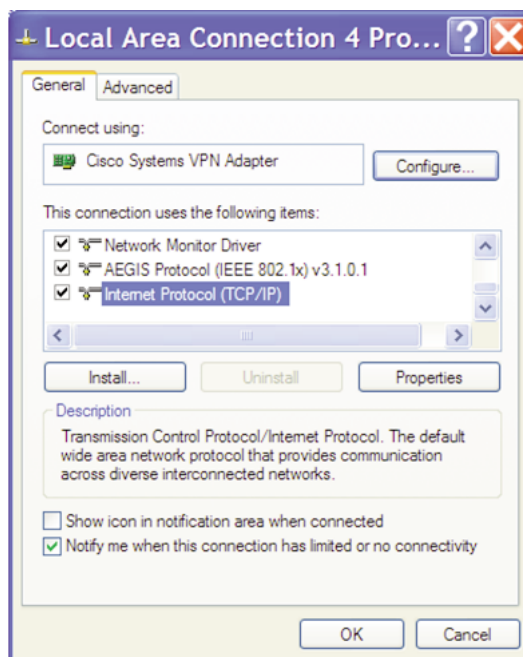
- Now drag the port connected to the Duality to the top of the list (in our example this port is Ethernet 2):



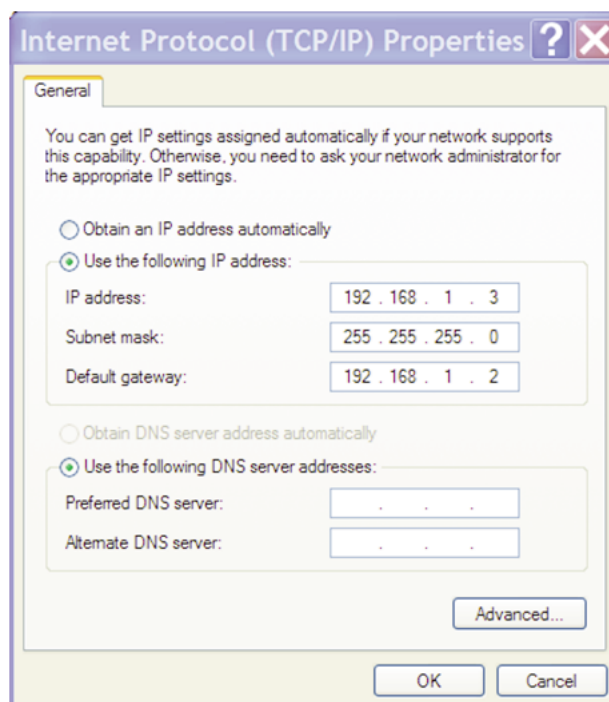
- Now click 'OK' then 'Apply'.
- Alternatively, if you have already created a separate Location for your existing network you can simply delete the unused ports (Airport, Firewire) from the Duality location so that only the network port connected to Duality is remaining.

DIRECT NETWORK CONNECTION (PC):

- Double click on Network Connections in Start/Control Panel. Right click on the network adapter connected to your Duality (likely to be called "Local Area Connection"). Select Properties.



- Select Internet Protocol (TCP/IP) and Properties.
- Next, configure the adapter as shown below:



Click on OK on both windows to save. Back in your network connection list, right click on your adaptor and ensure that it is enabled. If it is disabled, the enable option will appear in the list. Click on enable.

ENABLING IPMIDI ON YOUR DUALITY:

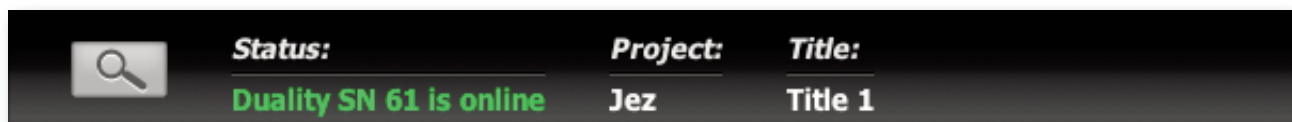
In the **SSL > MISC > SETUP** menu, toggle the '**MIDI connects via:**' setting to '**Network**'. Your console will now communicate with your workstation via Ethernet. With '**MIDI connects via:**' set to '**MIDI ports**', Duality will communicate with your workstation via the conventional MIDI connectors on the rear of your console.


Also in the **SSL/MISC/SETUP** menu, ensure that the '**DAW**' option (workstation layer 1) and **DAW2** (workstation layer 2) are set to match your workstation or workstations if you are using the second layer. Please note that you will need to restart the console after making a change to the DAW layer options.

The console will need to be rebooted after changing either of these settings.

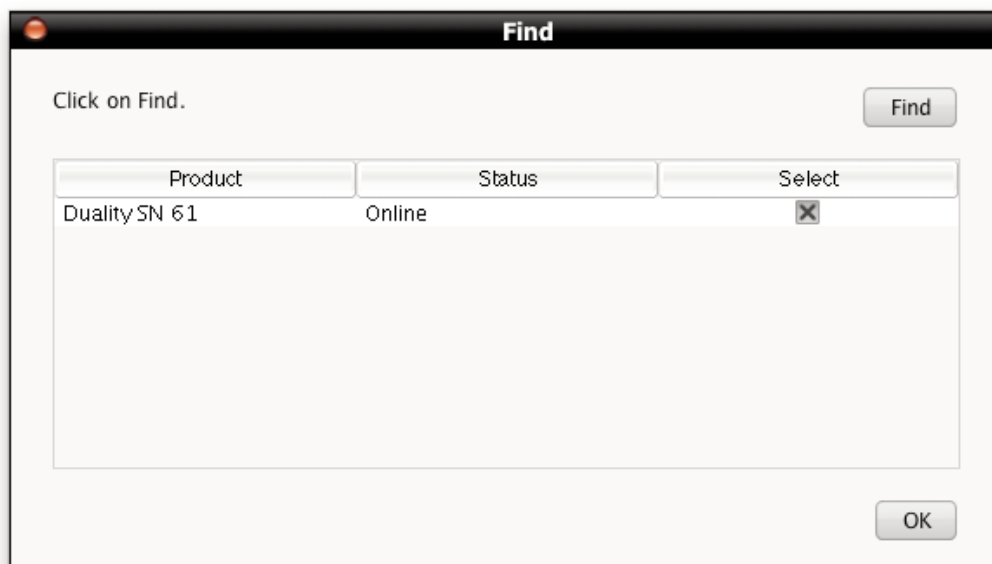
FINDING A CONSOLE ON THE DUALITY REMOTE APPLICATION:

Launch Duality Remote on your workstation. Normally Duality Remote will automatically locate the console and the message 'Duality Connected' will be shown in green text in the bottom left hand corner of the browser:



If the list is empty, click on '*Find Duality*', select the console you wish to connect to and click the check box. The first time you connect (or if you wish to connect to a different console) kick on the '*Find*' icon. .

If your console does not appear in the list, it suggests you have a network related issue. Please follow the steps in the



network trouble shooting section at the end of this document to resolve the issue.

SETTING WORKSTATION(S) TO COMMUNICATE VIA ipMIDI

The Duality SE software uses 16 virtual MIDI ports which are pre-assigned as follows:

Port	DAW	Assignment	Port	DAW	Assignment
1	1	Faders 1 – 8	9	2	Faders 17 – 24
2	1	Faders 9 – 16	10	2	Faders 25 – 32
3	1	Faders 17 – 24	11	2	Faders 33 – 40
4	1	Faders 25 – 32	12	2	Faders 41 – 48
5	1	Faders 33 – 40	13		Not used
6	1	Faders 41 – 48	14		MTC Input *
7	2	Faders 1 – 8	15		Duality MIDI port 1
8	2	Faders 9 – 16	16		Duality MIDI port 2

* ipMIDI port 14 or hardware MIDI port 7 can be used as the MTC input, allowing MTC to be connected from systems (such as RADAR) that do not support the ipMIDI driver. MTC should only be routed to one port at a time.

Note that there are now two switchable workstation layers allowing to independent workstations to be interfaced. Once configured, you can switch between the two layers using the console's **SSL>DAW** menu.

MIDI Port 14 – If your console is equipped with automation, this port is used to feed automation with MTC.

MIDI Ports 15 & 16 – Mapped to the conventional MIDI connectors on the rear of the console allowing connection of a keyboard or other MIDI device to your DAW via ipMIDI.

To select which DAW is assigned to each layer go to **SSL>MISC>SETUP** on your console and select the following:

DAW 1 – Select from: *Protools HUI / Logic / Logic Handshake / Nuendo / Digital Performer / Sonar*

DAW 2 – Select from: *Protools HUI / Logic / Logic Handshake / Nuendo / Digital Performer / Sonar / None*

After making these changes the console should be restarted.

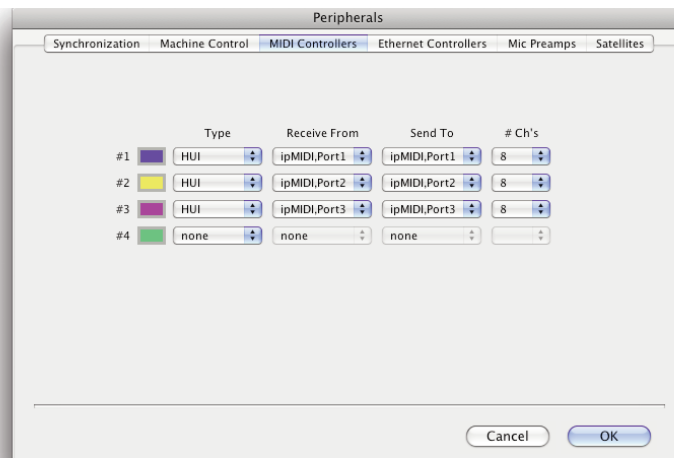
The MCU protocol supports automatic detection of connected control surfaces. To enable this select Logic Handshake. Logic will then automatically detect the DUALITY. If you select Logic Handshake on both layers then Logic will detect 6 control surfaces, which may not be what you want! The other protocols do not transmit handshaking messages.

To enable control of your workstation via HUI or MCU your workstation(s) must be configured to match the appropriate layer in the list above. This is done using the MIDI Controller configuration page of your workstation.

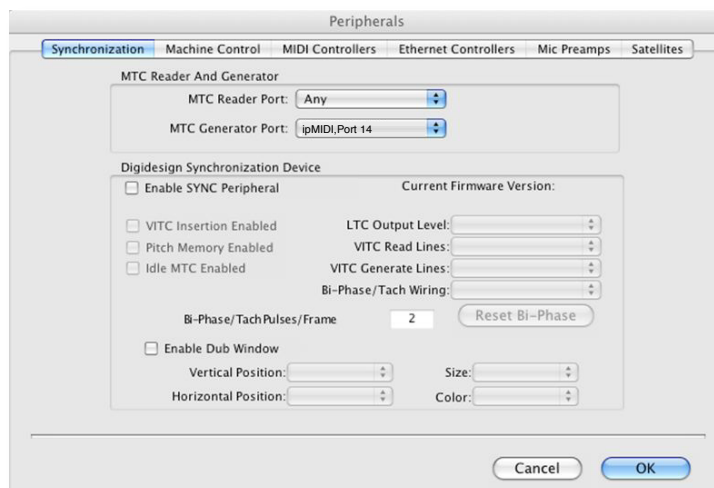
The following pages show examples using Pro Tools 7 and Logic Pro 8.

PRO TOOLS 7

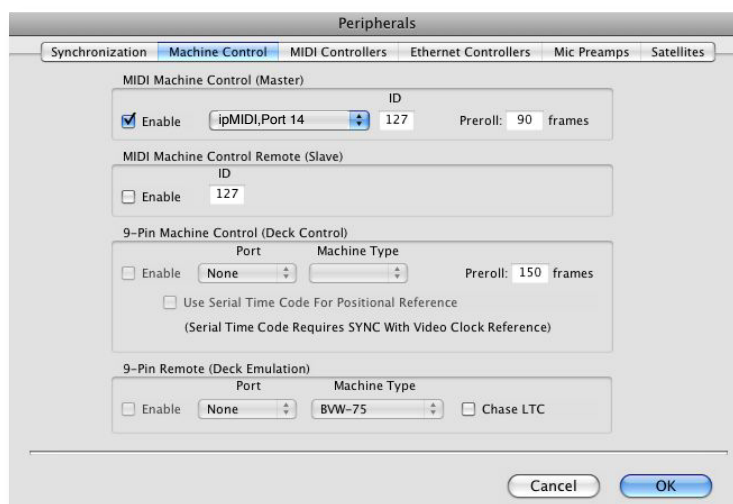
In the Setup menu, click on *Peripherals* and select the *MIDI Controllers* tab. Using MIDI controllers 1, 2 and 3, select *HUI* as the MIDI controller Type and assign the MIDI ports for this layer's DAW to the two MIDI controllers, as listed in the table above. If Pro Tools has been assigned to Layer 1, the MIDI Controllers window should look like this:



If you have automation, set the MTC generator port in the Synchronization tab to ipMIDI port 14 (or physical MIDI port 7 if you are using the console MIDI ports):

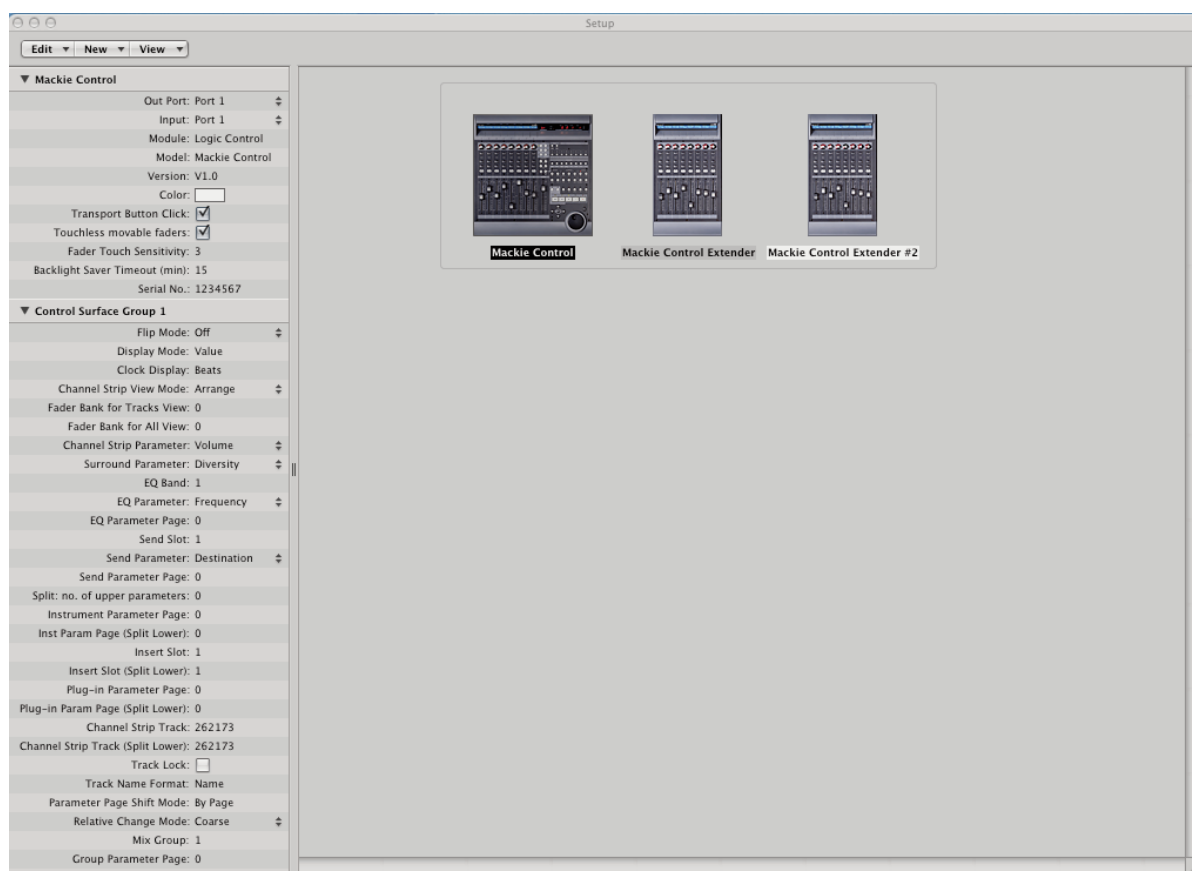


Also, set the MMC midi port in the Machine Control tab to ipMIDI port 14 (or physical MIDI port 7 if you are using the console MIDI ports):



LOGIC PRO 8

When Logic is assigned to one of the two Duality workstation layers a Mackie Control together with a Mackie Control Extender must be added to the Logic Pro Preferences/Control Surfaces Setup menu as shown below:

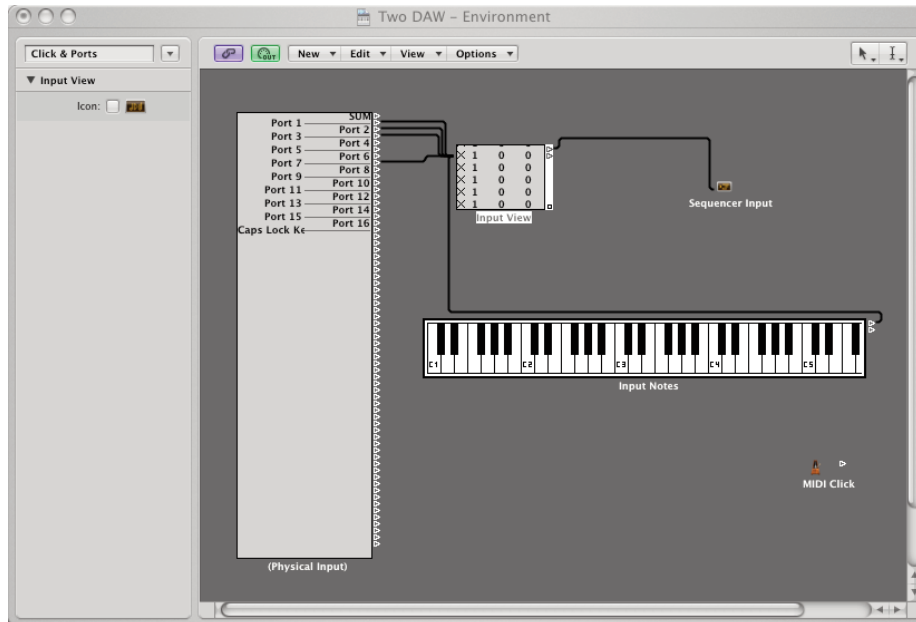


Duality Faders 1-8 are mapped to the Mackie Control ports along with the Master Fader and workstation Control function switches. Duality Faders 9 -16 and 17-24 are mapped to the Mackie Control Extender ports. The actual ipMIDI ports used will depend on which layer (or layers) Logic is assigned to. See the list of Duality MIDI port assignments for details. It is essential that the layout shown is followed. If the physical arrangement is reversed, then the Duality faders will not map correctly to the on-screen faders in Logic.

If the protocol is set to **Logic Handshake**, Logic should automatically detect six virtual controllers which will be shown in the Logic Setup menu (as shown above), with the appropriate Duality ipMIDI ports assigned. If Logic fails to detect the control surfaces, then the controllers can be added manually via the New/Install menu and the appropriate MIDI Out port and Input assigned. As described above, normally only one layer should be set to **Logic Handshake**, otherwise Logic will detect and connect to all 12 MIDI ports!

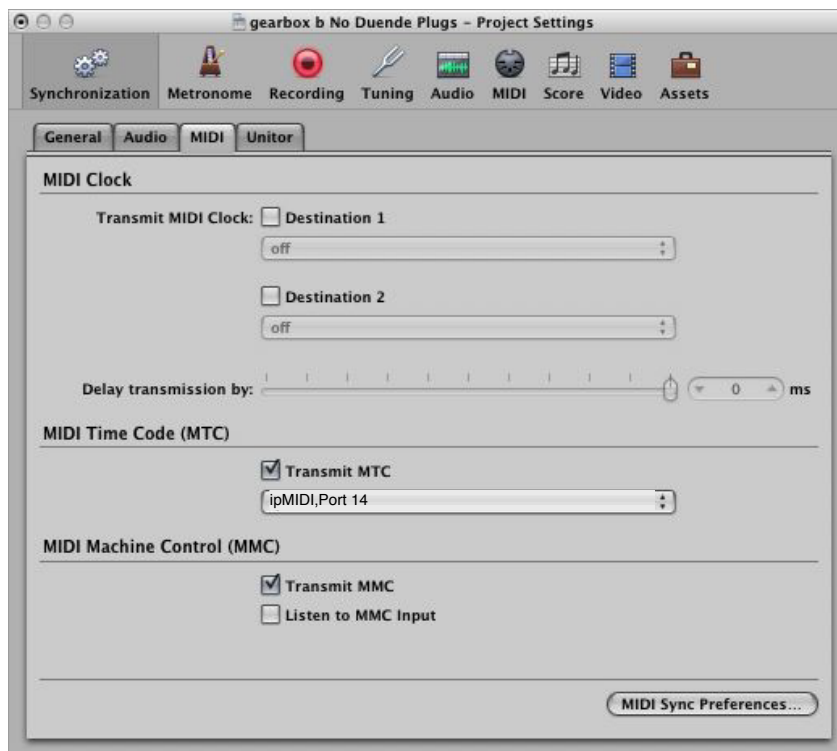
Full details can be found in the online Logic Pro 8 Control Surfaces Support guide in the Logic Help Menu.

Logic's Click and ports environment layer selects the SUM of all of the ipMIDI input ports as its default MCU control data source. This may lead to difficulties when using multiple DAW layers. To avoid Logic responding to MIDI messages intended for the other DAW layer, the Click and Port MIDI port mapping should be changed from SUM to individual direct MIDI port assignment. The example below shows Logic on DAW layer 1:



PREFERENCES/CONTROL SURFACES SETUP MENU:

If you have automation, set the MMC midi port in File/Project Settings/Synchronisation/MIDI to ipMIDI port 14 (or physical MIDI port 7 if you are using the console MIDI ports):



For other DAWs, please refer to the program's manual for details about configuring MIDI controllers.

NETWORK TROUBLE SHOOTING:

Most Ethernet adaptor cards have two leds associated with each port. The first indicates that the link is connected and the second indicates network traffic. Please note that some Macintosh computers do not have external leds to indicate status. Instead the link status is shown in the System Preferences/Network menu.

On your host workstation computer, confirm that the link led is permanently illuminated. If it is not permanently illuminated, it suggests you have a cabling error. In this instance please check the following:

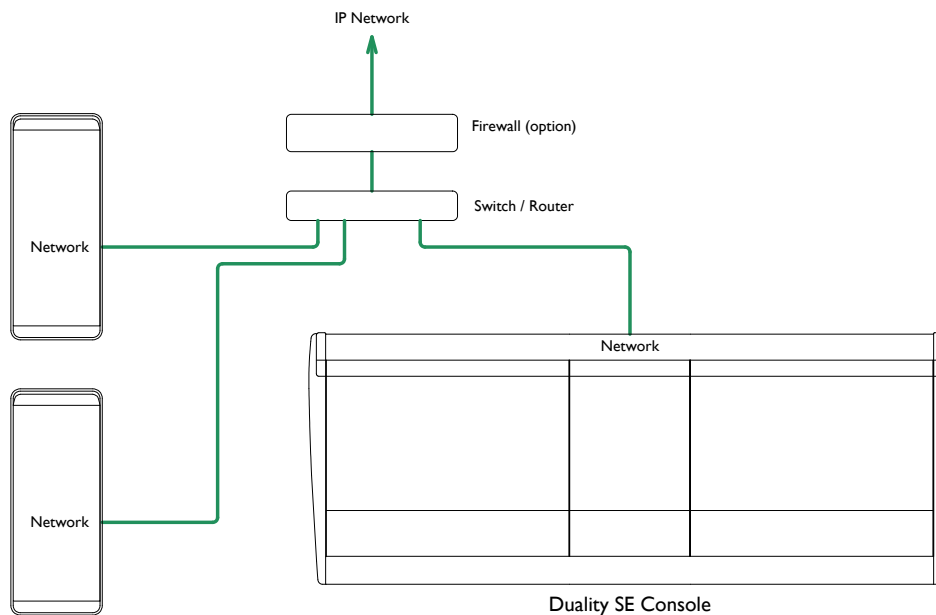
- The RJ45 network connector on the console and on your workstation are fully inserted.
- If you are using a pin-pin cable to make a direct connection between your console and workstation, try replacing it with a crossover cable
- Try replacing the network cable
- If you are not using a direct connection between your console and workstation using the default fixed IP address on the console, please try this simple configuration to rule out issues with external routers and network switches. If the link led is illuminated, the next step is to confirm that the activity led is illuminating periodically to show network traffic. If it does not illuminate periodically check the following:
- If your workstation is not connected directly to your console using a crossover RJ45 cable and fixed IP addressing, follow the installation instructions to configure this simple network configuration to rule out issues with any external routers or network switches.
- Using the fixed default IP address on the console, check that the workstation has basic communications using 'ping'.

Under Windows – Select: 'Run' under the 'Start' menu. In the resulting window enter 'cmd' to launch the command prompt. In the command prompt window enter 'ping 192.168.1.2'

On OSX: Open a Finder window, select *Applications*, then *Utilities*, and double-click on *Terminal*. In the terminal window enter 'ping -c4 192.168.1.2'

In both cases your host computer will try to establish communications with your console. In the resultant terminal text, check that the console responded to every message sent by your workstation.

LARGER NETWORKS AND IPMIDI



To ensure minimum latency the ipMIDI driver uses multicast UDP rather than TCP/IP. This means that the network connection should be as short as possible and should only use routers that can support high data transfer rates. Problems have been experienced with some domestic routers, particularly when used with Pro Tools.

Because ipMIDI uses multicast UDP packets, messages between one computer and the Duality SE will be received by all other computers and printers on the network, potentially causing problems in installations with more than one Duality. The UDP packets can be blocked by using a firewall router and connecting the main network to the WAN connector. The firewall can then be configured to allow all traffic apart from UDP ports 21928 through 21947 (which are used by ipMIDI) and, optionally, port 50081 (which is used by the Duality SE Remote application).

It may be necessary to use a separate Ethernet switch in place of the integrated firewall router switch as some of these devices can not support the high data transfer rate required. The NetGear FS108 (an eight port switch) has been used successfully. Most systems can be easily configured with a direct connection between Duality SE and the controlling computer.

SSL can supply a preconfigured 8-port managed switch which will isolate the console ipMIDI data from the facility's IP network. Please contact your sales representative or SSL Service Department for further information.

ASSIGNING THE DUALITY SE IP ADDRESS:

By default, Duality SE uses a fixed IP address of 192.168.1.2. Dynamic (DHCP) address can be selected via the **SSL > MISC > NET** menu. The currently assigned address is also shown in the **MISC > ABOUT > NET** menu.

If your Duality SE is connected to the workstation computer via a network switch or router, it should be assigned a DHCP IP address; otherwise the fixed option should be used.

*Whenever you have changed the IP mode, you need to restart your Duality for the change to take effect. A software restart option is available in the **SSL > MISC > NET** menu.*

An alternative fixed IP address can be set using the console diagnostic port. This should not be necessary in most installations. You will need a PC or Mac running terminal emulator software. Connect your computer's serial port to the rear of the console using a 9 way 'D' type extension cable. The pin out for the console's 9 way 'D' type serial connectors is shown on page 47.

 Refer to Appendix C, page 46, for the connector pinouts.

Set the terminal configuration as follows:

Baud rate 19200, 8 data bits, No parity, No start bit, 1 stop bit, Flow control Xon/Xoff

Press the 'Return' key (<CR>) and the terminal window should echo a '>' if communication is established.

To fix the IP address type the following:

ip <CR>

setip nnn nnn nnn nnn <CR> Where 'nnn...' is the IP address, 192.168.1.2

setmask nnn nnn nnn nnn <CR> Where 'nnn...' is the subnet mask 192.168.1.1. Note that this should match other devices local to the console.

setgate nnn nnn nnn nnn <CR> Where 'nnn...' is the gateway address e.g. '10 1 1 1'

ENABLING THE LOGICTIVITY FEATURES ON YOUR CONSOLE

The following information only applies to Duality consoles that do not currently have the Duality SE software installed.

1. Find the console's serial number. The serial number label is located on the rear of the console adjacent to the mains inlet connector. The serial number starts with the letters Duality followed by a numerical number. Make a note of the numerical number for the registration process (e.g. if the serial number is DO80, note 80).
2. If you have not registered your console on-line (or you have forgotten your username), complete the on-line registration:

<http://web.solidstatellogic.com/update/newuser.jsp>

3. Navigate to the on-line registration page and enter your activation code and the numerical element of your console's serial number previously noted. The activation code can only be used once. Please ensure that you enter the correct serial number:

<http://web.solidstatellogic.com/update/activateacode.jsp>

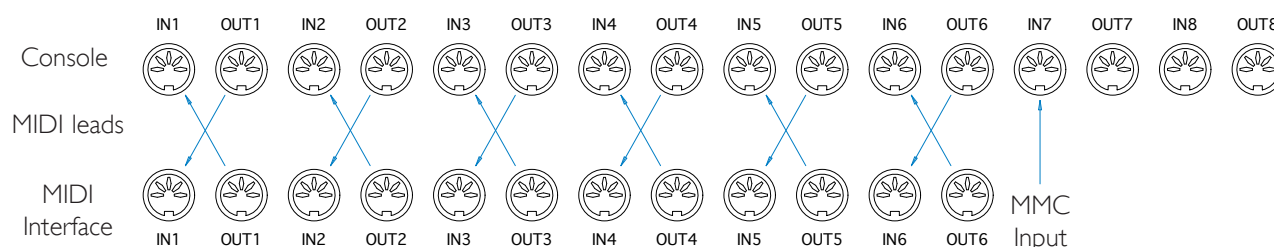
4. After a successful activation, you will be invited to download and install the latest version of software. Follow the link to the download page.

USING PHYSICAL MIDI PORTS TO CONNECT YOUR DAW

As an alternative to ipMIDI, standard multi-port MIDI connections can be used between the Duality console and the DAW. In this mode only one DAW layer can be configured.

To select this mode navigate to the **SSL/Misc/Setup** menu and set **MIDI communicates via: MIDI Ports**.

The console communicates with the DAW via the MIDI ports located on the rear of the console:



MIDI ports should be connected to your DAW MIDI interface unit – three available ports are required (one port includes an IN and OUT socket). To connect a port, the output of the MIDI interface unit port 1 should connect to the MIDI 1 input port of the Duality SE and the MIDI output of the Duality SE port 1 should connect to the input of your MIDI interface unit port 1. Repeat for the other ports using the diagram above as a guide.

Follow the instructions on configuring your workstation but use the physical MIDI ports rather than the virtual MIDI ports when selecting MIDI ports.

The recommended maximum length of MIDI cables is 15 meters.

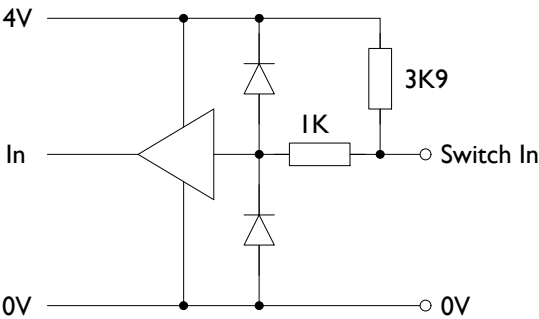
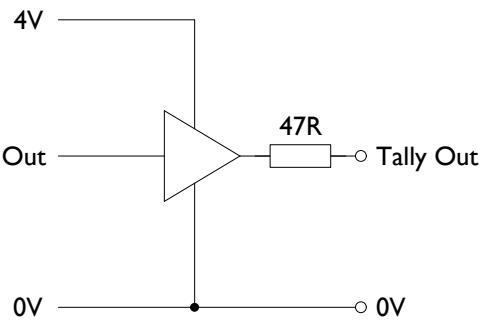
TRACKBALL OUTPUT

The inbuilt trackball is a standard USB device. Its signal output is available on the USB-A connector on the rear of the centre section. This should be connected to the workstation computer. The trackball is the Kensington Expert Mouse and the Kensington driver disk is supplied with the console.

FLASH CARD

An SD flash card is fitted vertically at the rear of the console adjacent to the two serial data connectors. This is used for storing project information and should not be removed during normal operation.

LOGIC SIGNAL INPUT AND OUTPUT CIRCUITS



RED LIGHT/TALKBACK CONNECTOR

The D25 fitted to the rear panel provides the connection for the red light switch contacts. It also provides input and output signals for monitoring, talkback and signalling logic functions. See page 33 for connector pinout.

Refer to the diagram opposite for the equivalent logic functions for the signal inputs and outputs.

The contacts for the Red Light output are via a DIL relay and are rated as follows: 30Vdc, 25Vac, 100mA max. Do not use the Red Light contacts to directly switch capacitive or reactive loads; always use an external relay with a suitable contact rating.

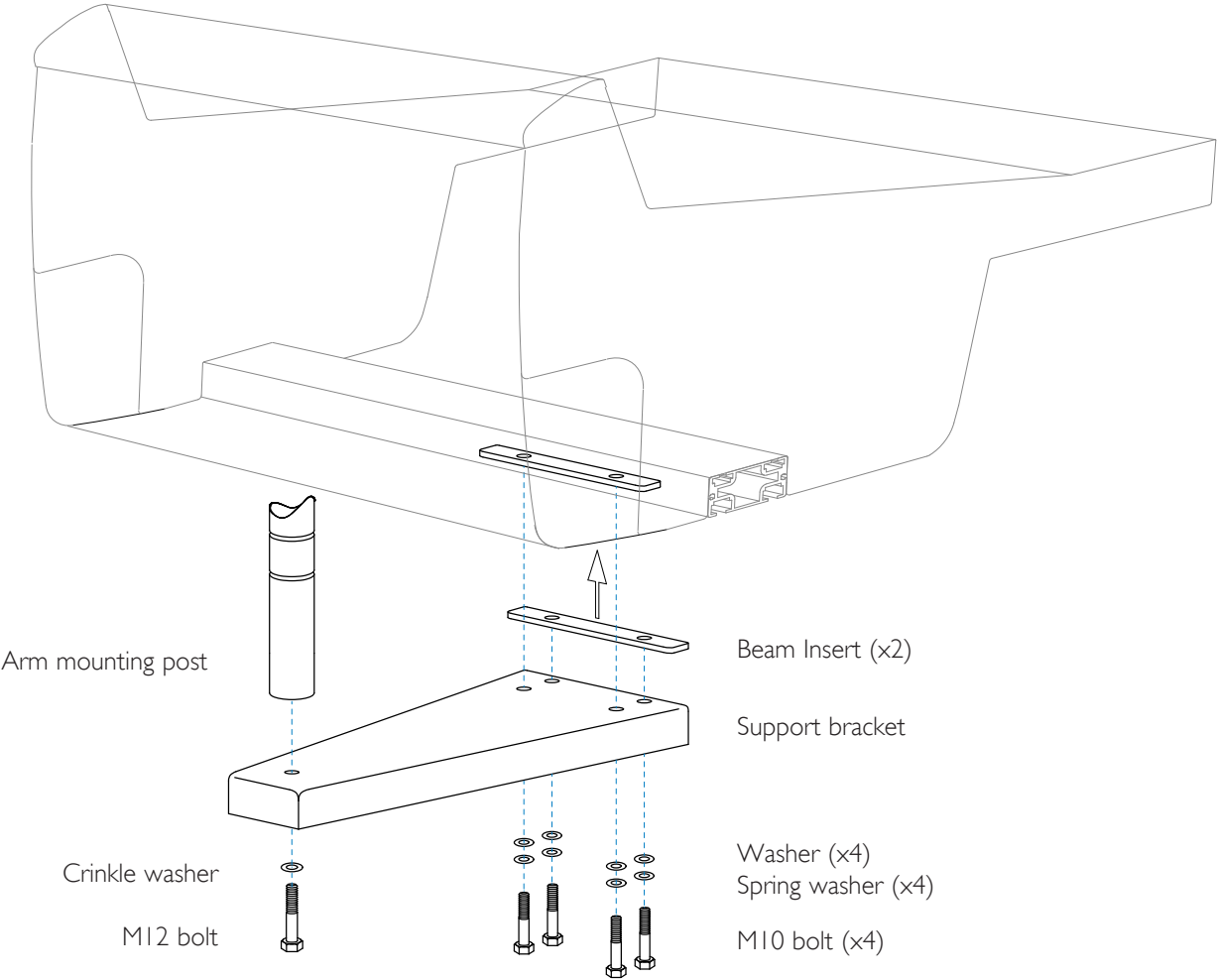
 Refer to Appendix C, page 46, for the connector pinouts.

FOOTSWITCH CONNECTION

In addition to the logic functions provided in the above red light/talkback connector, two additional assignable inputs are available on footswitch 1/4" jacks.

Mono jacks are used – signals are activated by connecting the two jack contacts together.

TFT MONITOR ARM ATTACHMENT



TFT MONITOR ARM ATTACHMENT (OPTION)

A single or double TFT monitor mounting arm is available as an option. The arm is compatible with all VESA compliant flat screen monitors.

The arm is attached to the console using a support plate which is bolted to two inserts in the main console beam. The diagram opposite details how the arm is attached to the console beam.

ARM SPECIFICATIONS

The standard articulated arm has a maximum weight capacity of 8.5Kg (18.7lb), with a maximum extension (centre of mounting pole to rear of screen) of 460mm.

Articulated arms with increased load capacities of 12Kg (maximum extension of 425mm) or 24Kg (maximum extension of 437mm) are available at additional cost. Contact SSL's Project Engineering department for further details.

Monitor arms are supported on a 700mm pole which will have a small degree of flex when supporting a large load. It is recommended that when using the heavy duty monitor arms only a single arm is used per mounting post

APPENDICES

APPENDIX A – SPECIFICATIONS

DUALITY CONSOLE				
Parameter	Condition	Value	Unit	Notes
Height	To top of meter trim	982	mm	
Height adjustment		-0 +10	mm	
Width: (I)	24 channel console	1,620	mm	No patchbay
	48 channel console	2,610	mm	No patchbay
	48 channel console plus patch	3,098	mm	Internal patchbay
	72 channel console	3,600	mm	No patchbay
	96 channel console	4,590	mm	No patchbay
	19" racking section	488	mm	
	Producer's table section	603	mm	
Depth		1,024	mm	
Weight:	24ch	180	Kg	Empty Each
	48ch	300	Kg	
	72ch	420	Kg	
	96ch	540	Kg	
	19" racking section	15	Kg	
	1U patchrow	3.2	Kg	
	Producer's section	18	Kg	
Heat dissipation:	24ch	880	W	
	48ch	1,540	W	
	72ch	2,200	W	
	96ch	2,860	W	
Voltage	Input range	100 – 240	V	±10%
Current:	Over voltage range: for 1st 24ch	9.1 – 3.9	A	24 channels inc centre section
	For additional 24 channel bays	6.9 – 2.9	A	1 for 48ch, 2 for 72ch, 3 for 96ch
Power factor		0.95		
Fusing	None			
Noise	Fanless			
Connectors:	Mains input	IEC male		
	MIDI	5-pin DIN 180° female		
	Network	RJ45 100BaseT		
	Line level audio	25-way D-type female		
	Microphone input	XLR 3-pin female		
	Mini LS output	XLR 3-pin male		
	TB / Listen Mic / FB sends	1/4" TRS jack female		
	USB	4-pin type A		
	Serial	9-way D-type female		

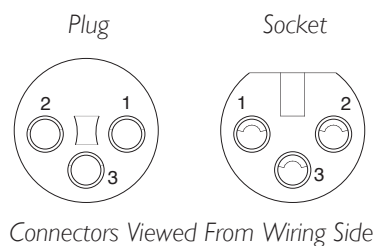
- I. Dimensions apply to straight consoles only. For dimensions of consoles which include corner sections please contact to SSL's Project Engineering Department. projeng@solidstatellogic.com

APPENDIX B – CONNECTOR DETAILS

XLR 3-PIN

Pinout for Balanced Audio

Pin	Signal	Notes
1	Ground	
2	Hot	+ve
3	Cold	-ve



1/4" TRS JACK

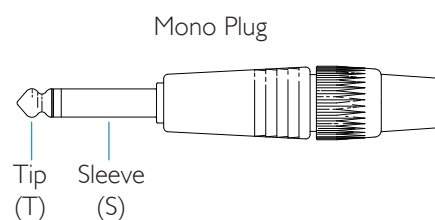
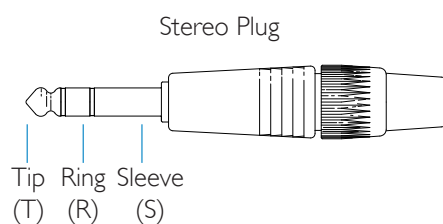
Pinout for Balanced Audio

Pin	Signal	Notes
Sleeve	Ground	
Tip	Hot	+ve
Ring	Cold	-ve

Pinout for Instrument / Footswitch*

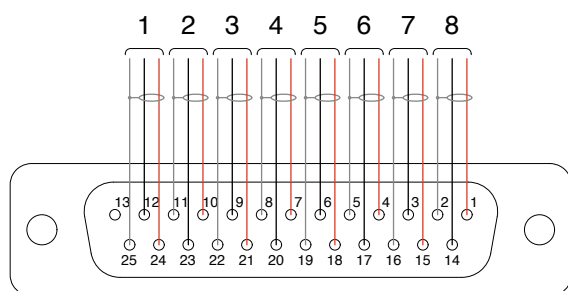
Pin	Signal	Notes
Sleeve	Screen / 0V	
Tip	Input / Switch	-ve

*Connect Tip to Sleeve to trigger input

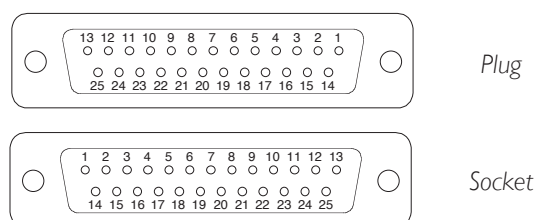


D-TYPE MULTIPIN

Circuit arrangement for all audio connectors:



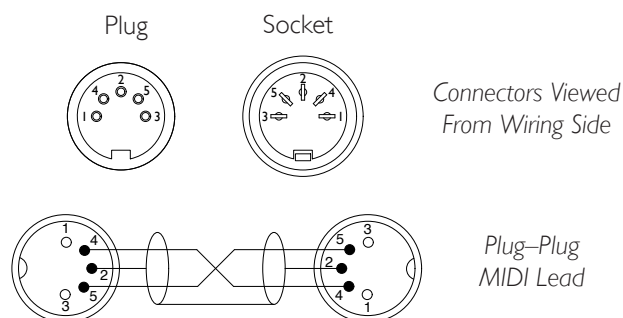
Connectors Viewed From Wiring Side



DIN 5-PIN 180°

Pinout for MIDI data

Pin	Signal	Notes
1	n/c	
2	Screen	
3	n/c	
4	Midi +	
5	Midi -	



APPENDIX C – CONNECTOR PINOUTS

CHANNEL CONNECTORS

CHANNEL INPUT		
Location:		24 Channel Bay Rear Panel
Connector Type:		XLR 3-pin female
Pin	Description	Notes:
1	Ground	
2	Hot (+ve)	
3	Cold (-ve)	

CHANNEL OUTPUTS / KEY / INSERT SEND & RETURN / MONITOR INPUT				
Location:		24 Channel Bay Rear Panel		
Connector Type:		25-way D-type female		
Pin		Description		Notes
1		cct 8	+	
14		cct 8	–	
2		cct 8	Screen	
15		cct 7	+	
3		cct 7	–	
16		cct 7	Screen	
4		cct 6	+	
17		cct 6	–	
5		cct 6	Screen	
18		cct 5	+	
6		cct 5	–	
19		cct 5	Screen	
7		cct 4	+	
20		cct 4	–	
8		cct 4	Screen	
21		cct 3	+	
9		cct 3	–	
22		cct 3	Screen	
10		cct 2	+	
23		cct 2	–	
11		cct 2	Screen	
24		cct 1	+	
12		cct 1	–	
25		cct 1	Screen	
13				n/c

CENTRE SECTION CONNECTORS

EXT A 1-4 / EXT B / METER OUT / MONITOR INSERT								
Location:		Center Section rear panel						
Connector Type:		25-way D-type female						
Cct	Hot	Cold	Screen	Ext A In 1-4	Ext B input	Meter Output	Mon Ins Send	Mon Ins Ret
1	24	12	25	Left	1-Left	Left	Left	Left
2	10	23	11	Right	1-Right	Right	Right	Right
3	21	9	22	Centre	2-Left	Centre	Centre	Centre
4	7	20	8	LFE	2-Right	LFE	LFE	LFE
5	18	6	19	Surr' Left	3-Left	Surr' Left	Surr' Left	Surr' Left
6	4	17	5	Surr' Right	3-Right	Surr' Right	Surr' Right	Surr' Right
7	15	3	16	–	4-Left	Solo Left	Lt to Decoder	Lt from Enc
8	1	14	2	–	4-Right	Solo Right	Rt to Decoder	Rt from Enc

MONITOR OUTPUTS / TRACK SENDS / CUE FX							
Location:		Center Section rear panel					
Connector Type:		25-way D-type female					
Cct	Hot	Cold	Screen	Mon Main	Mon Alt	Track Sends	CUE/FX Out
1	24	12	25	Main Left	Alt Left	Bus 1 [9,17]	St Cue AL
2	10	23	11	Main Right	Alt Right	Bus 2 [10,18]	St Cue AR
3	21	9	22	Main Centre	Alt Centre	Bus 3 [11,19]	St Cue BL
4	7	20	8	Main LFE	Alt LFE	Bus 4 [12,20]	St Cue BR
5	18	6	19	Main LS	Alt LS	Bus 5 [13,21]	FX 1
6	4	17	5	Main RS	Alt RS	Bus 6 [14,22]	FX 2
7	15	3	16	Mini A Left	Mini B Left	Bus 7 [15,23]	FX 3
8	1	14	2	Mini A Left	Mini B Left	Bus 8 [16,24]	FX 4

ECHO RETURNS 1-4 / MIX INSERT / MAIN MIX OUTPUTS							
Location:		Center Section rear panel					
Connector Type:		25-way D-type female					
Cct	Hot	Cold	Screen	Echo Returns	Mix Insert Send	Mix Insert Rtn	Main Mix Out
1	24	12	25	1 Left	Left [AL]	Left [AL]	Left [AL]
2	10	23	11	1 Right	Right [AR]	Right [AR]	Right [AR]
3	21	9	22	2 Left	Centre [BL]	Centre [BL]	Centre [BL]
4	7	20	8	2 Right	LFE [BR]	LFE [BR]	LFE [BR]
5	18	6	19	3 Left	Surr' Left [CL]	Surr' Left [CL]	Surr' Left [CL]
6	4	17	5	3 Right	Surr' Right [CR]	Surr' Right [CR]	Surr' Right [CR]
7	15	3	16	4 Left	Stereo Left	Stereo Left	Stereo Left
8	1	14	2	4 Right	Stereo Left	Stereo Left	Stereo Left

Centre section Connectors – Continued

RED LIGHT / TALKBACK / GP IO			
Location:		Centre Section Lower Rear Panel	
Connector Type:		25-way D-type female	
Pin	Description	Notes:	
1	Red Light Relay contact 'A'	Normally open – follows Red Light switch. See Note below. “ “ “ “	
14	Red Light Relay contact 'B'		
2	0V		
15	GP Input 1		
3	GP Input 2	Not used	
16	Monitor Cut	Not used	
4	Monitor Dim		
17	Slate Switch		
5	Listen Switch		
18	Red Light Switch		
6	TB All Switch		
19	FB A Switch		
7	FB B Switch		
20	Ext TB Switch		
8	+4V	Max 200mA	
21	Slate Tally		
9	Listen Tally		
22	Red Light Tally		
10	TB All Tally		
23	FB A Tally		
11	FB B Tally		
24	Ext TB Tally		
12	-		
25	-		
13	-		

Notes:

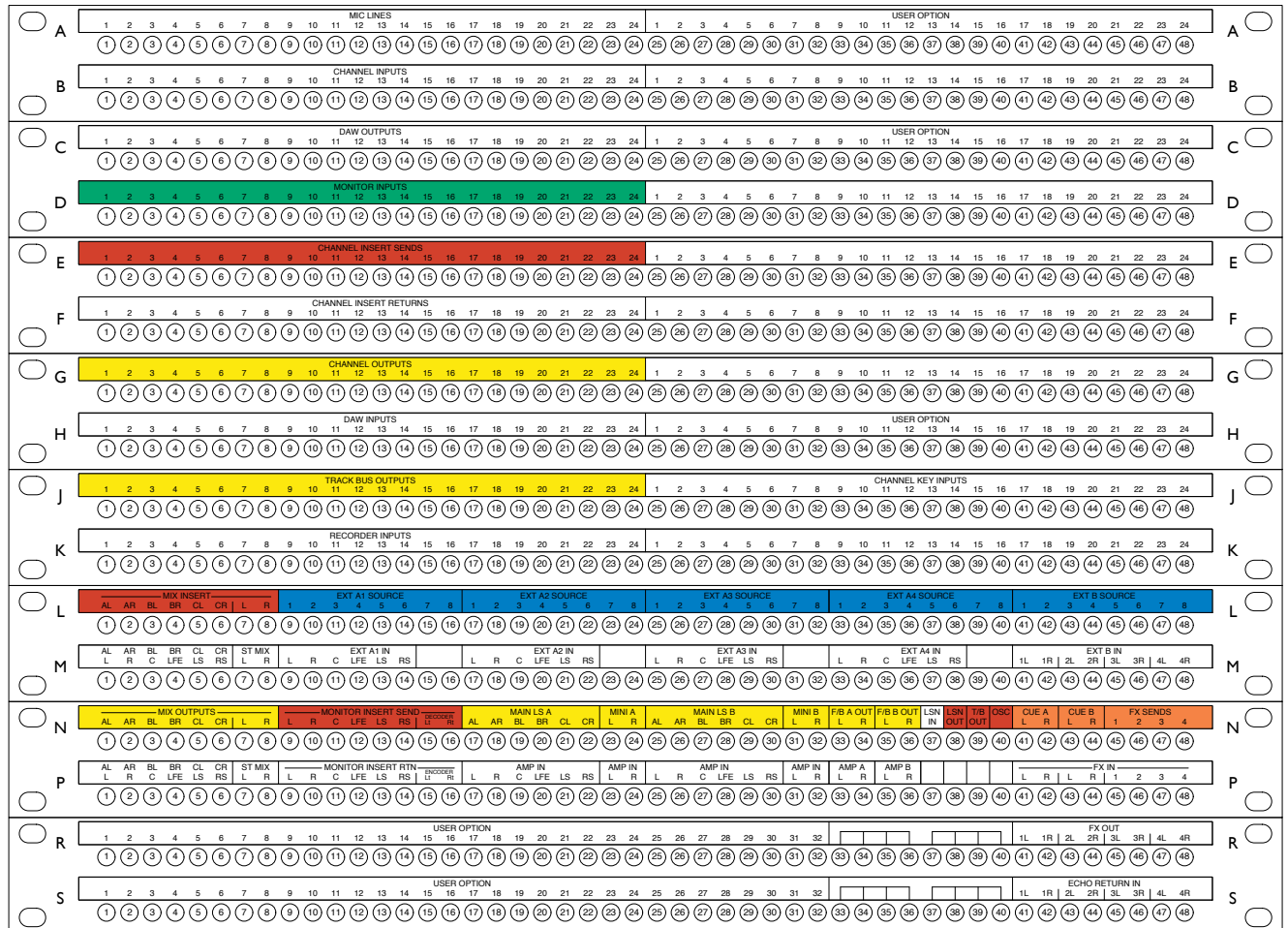
- Inputs are active low (connect to 0V to activate).
Inputs are pulled high to +4V via an internal 3k9Ω resistor and are diode clamped high and low.
- Tally outputs are open-collector pull down with series 47Ω resistor.

SERIAL 1&2 (SERIAL 2 – TERMINAL, SERIAL 1 – UNUSED)			
Location:		Center section Rear Panel – Lower	
Connector Type:		9-way D-type Male	
Pin		Description	Notes
1		0V	Connector case connected to chassis
6		0V	
2		Tx Data	
7		0V	
3		Rx Data	
8		n/c	
4		n/c	
9		n/c	
5		0V	

APPENDIX D – PATCHBAY LAYOUTS

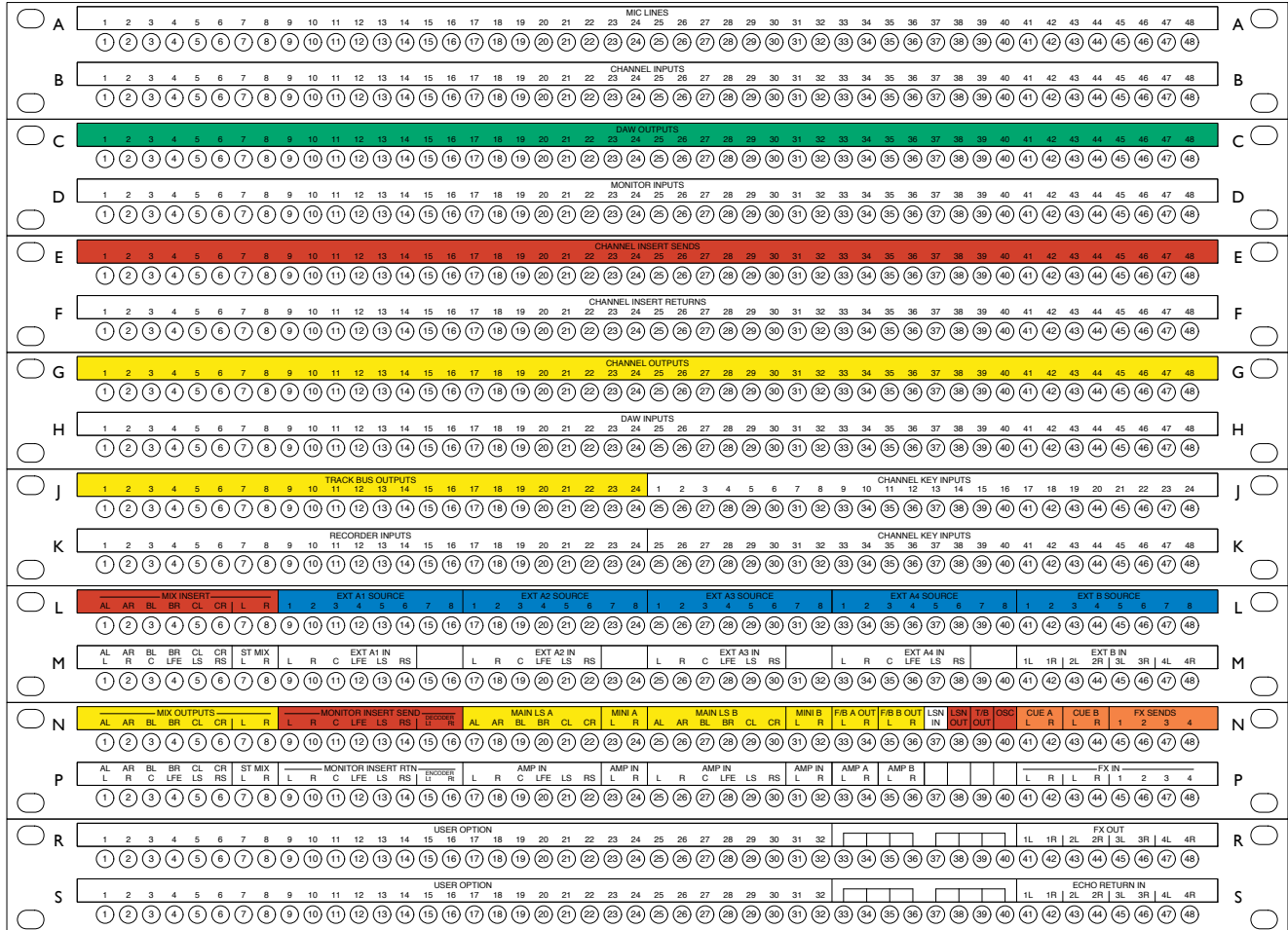
24 CHANNEL PATCHBAY

1 X 19" section.



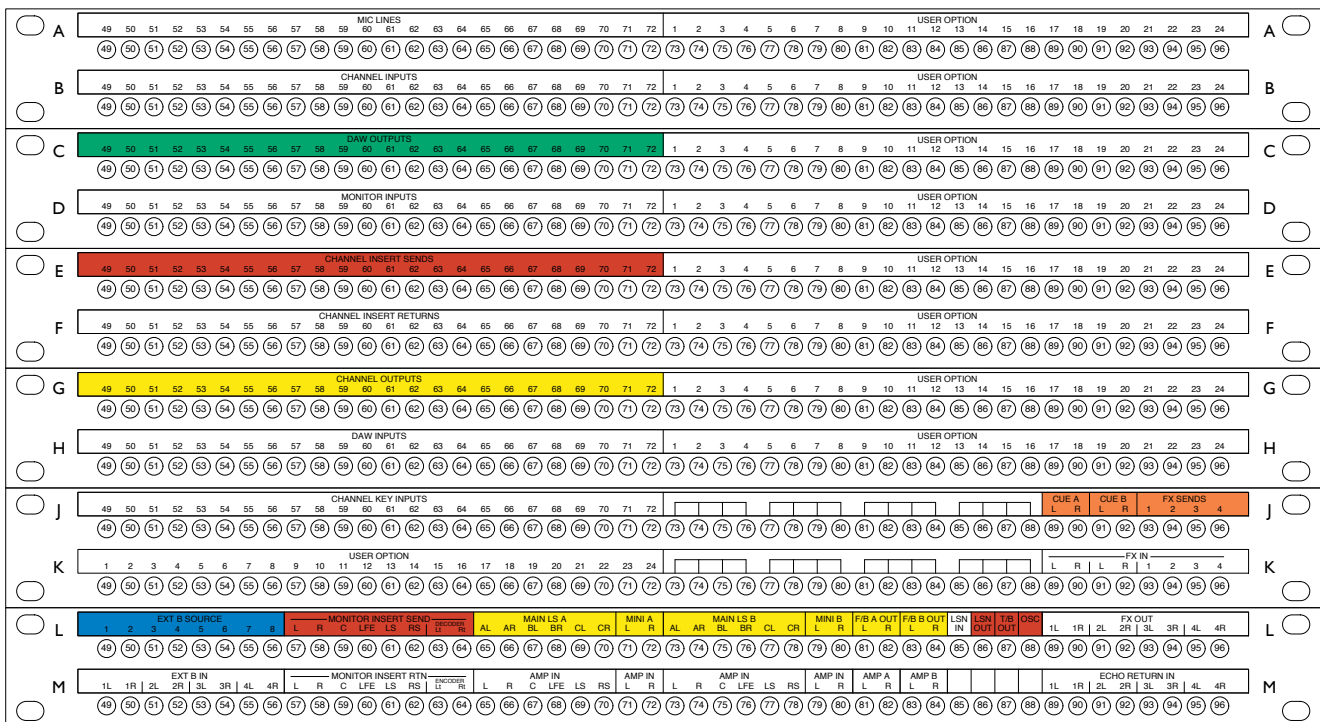
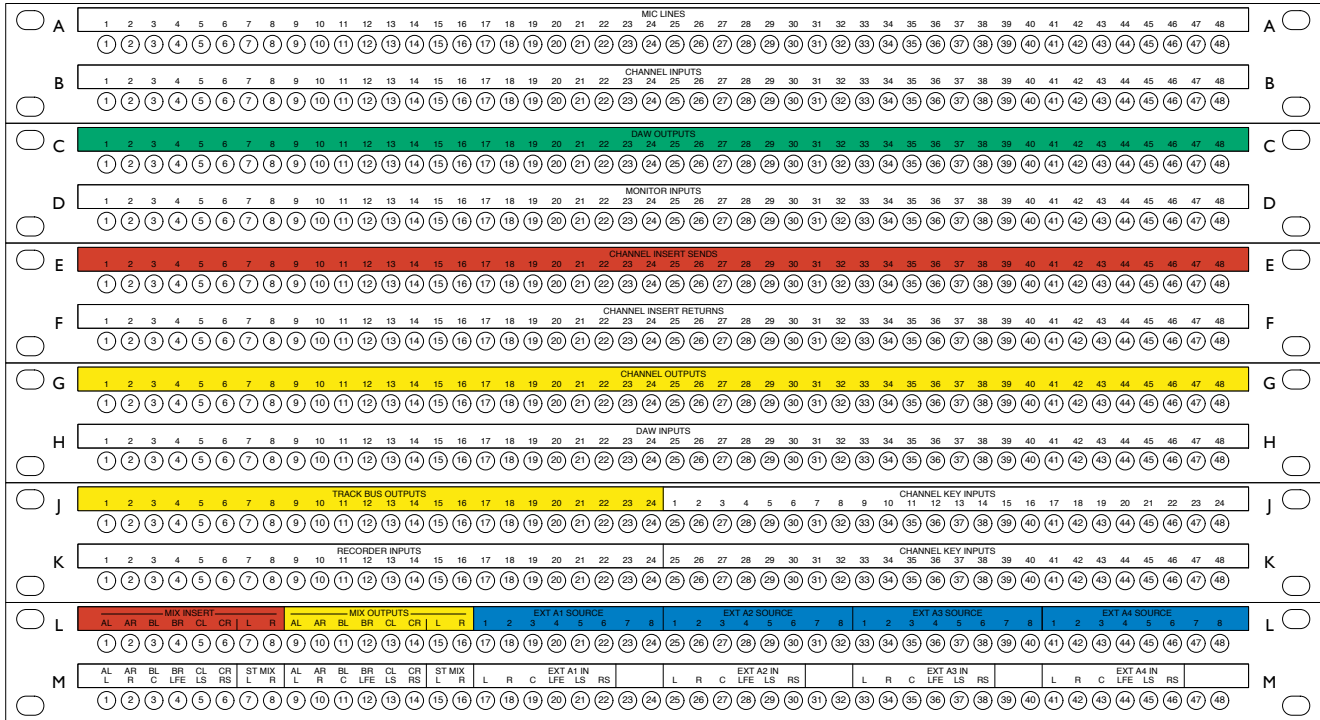
48 CHANNEL PATCHBAY

I x I9" section



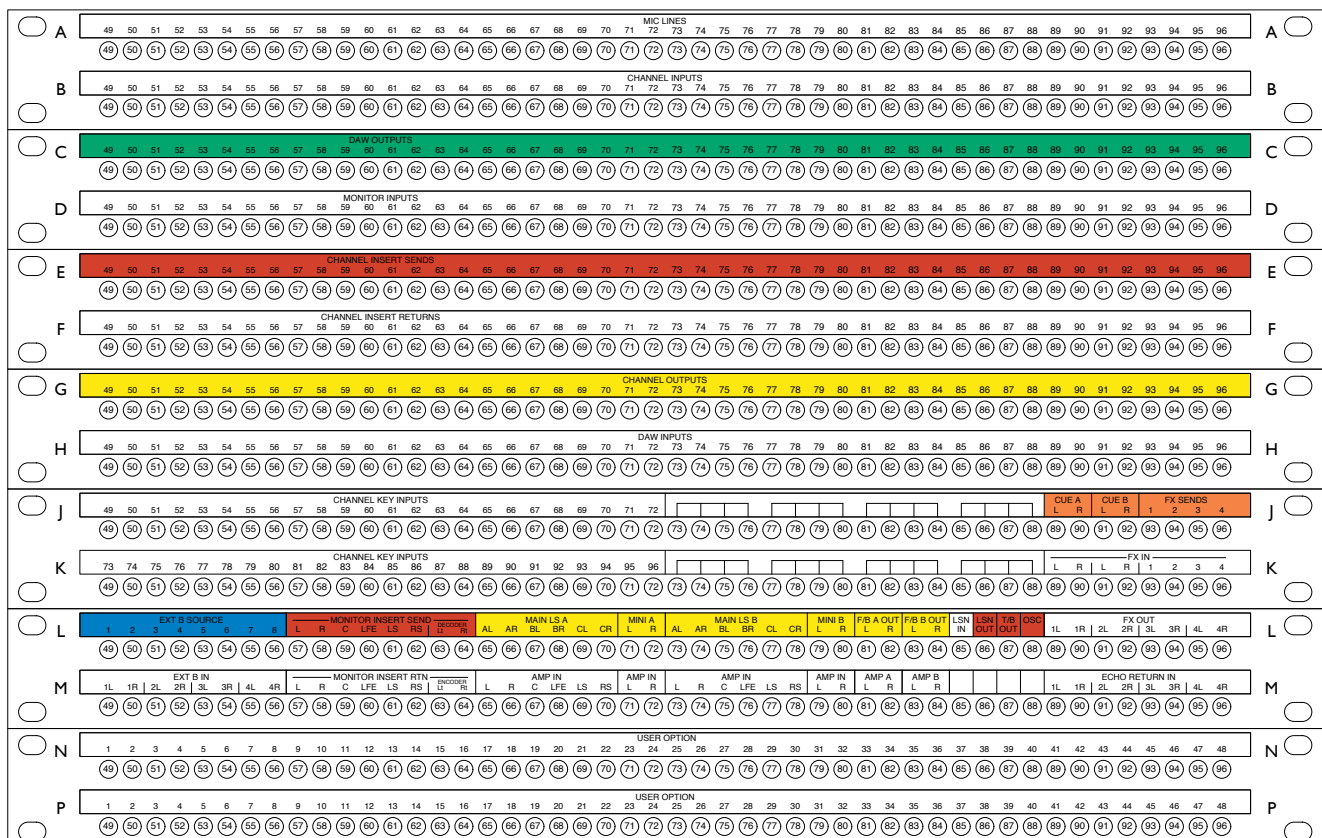
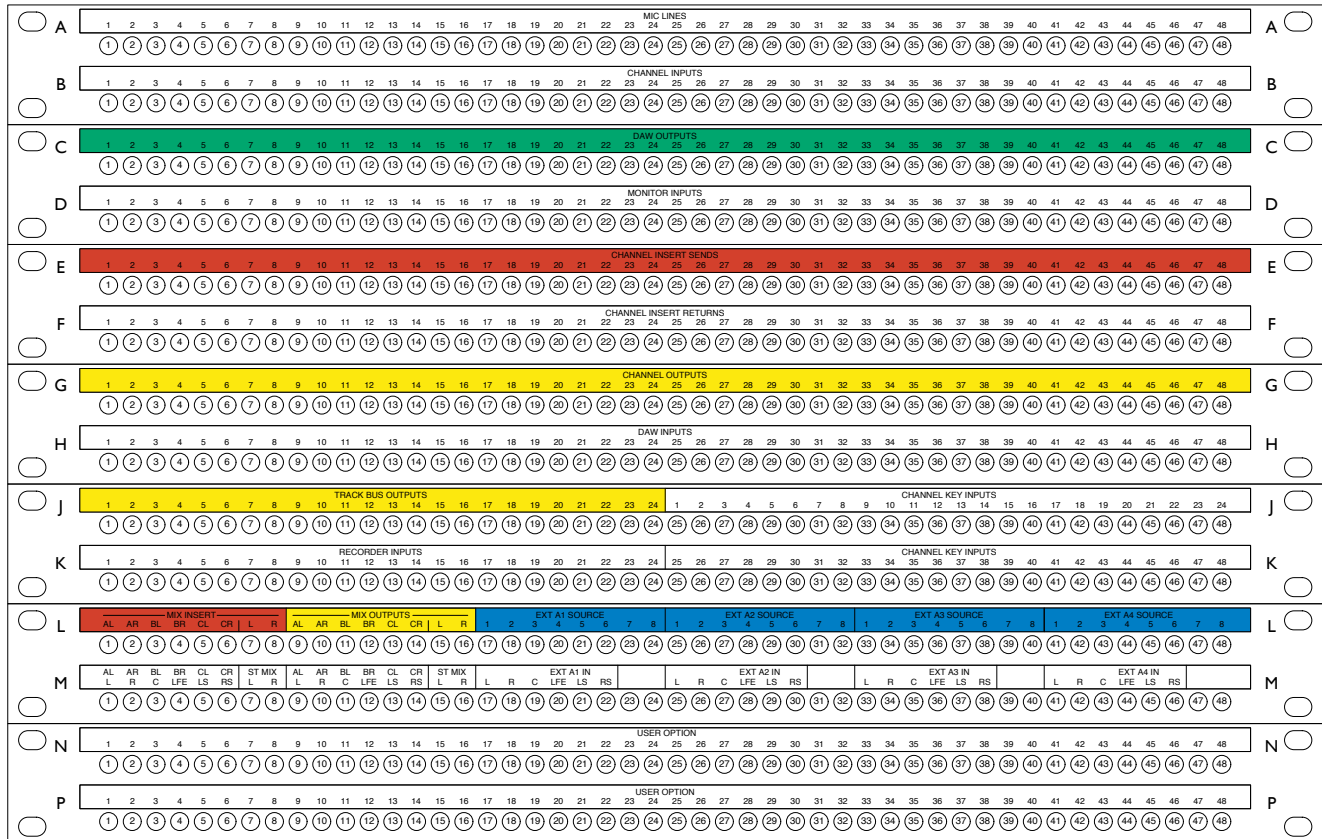
72 CHANNEL PATCHBAY

2 x 19" sections



96 CHANNEL PATCHBAY

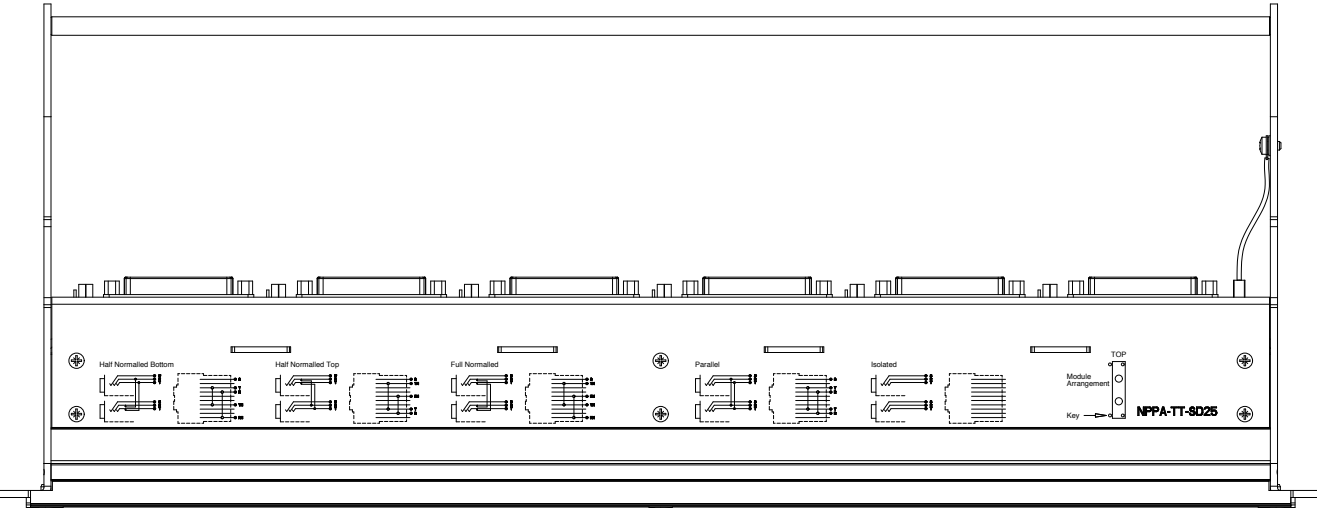
2 x 19" sections



PATCHROW NORMALLING LINK SETINGS

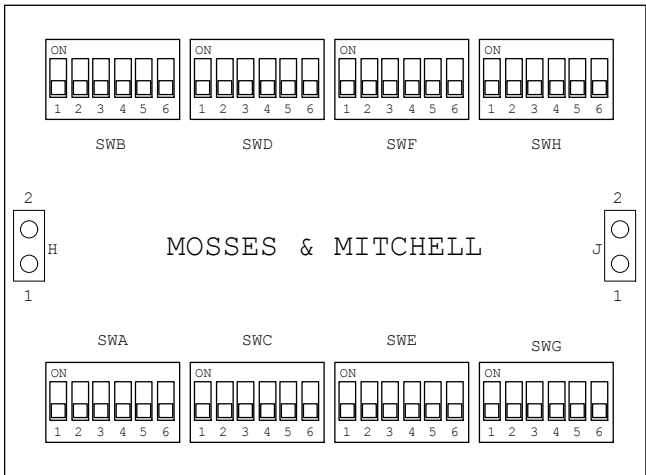
NEUTRIK PATCHROWS

Normalling of Neutrik patchrows is achieved by installing connecting links into the side of each pair of jacks. Detailed instructions on where to fit these links is provided in the manual included with the console’s trim kit; these instructions



MOSESSES AND MITCHELL PATCHROWS

Normalling of M&M patchrows is achieved by the setting of individual switches. The switches are located inside each patch assembly so the cover panel needs to be removed to gain access. The switch setting information is printed on the top of each patchrow cover.

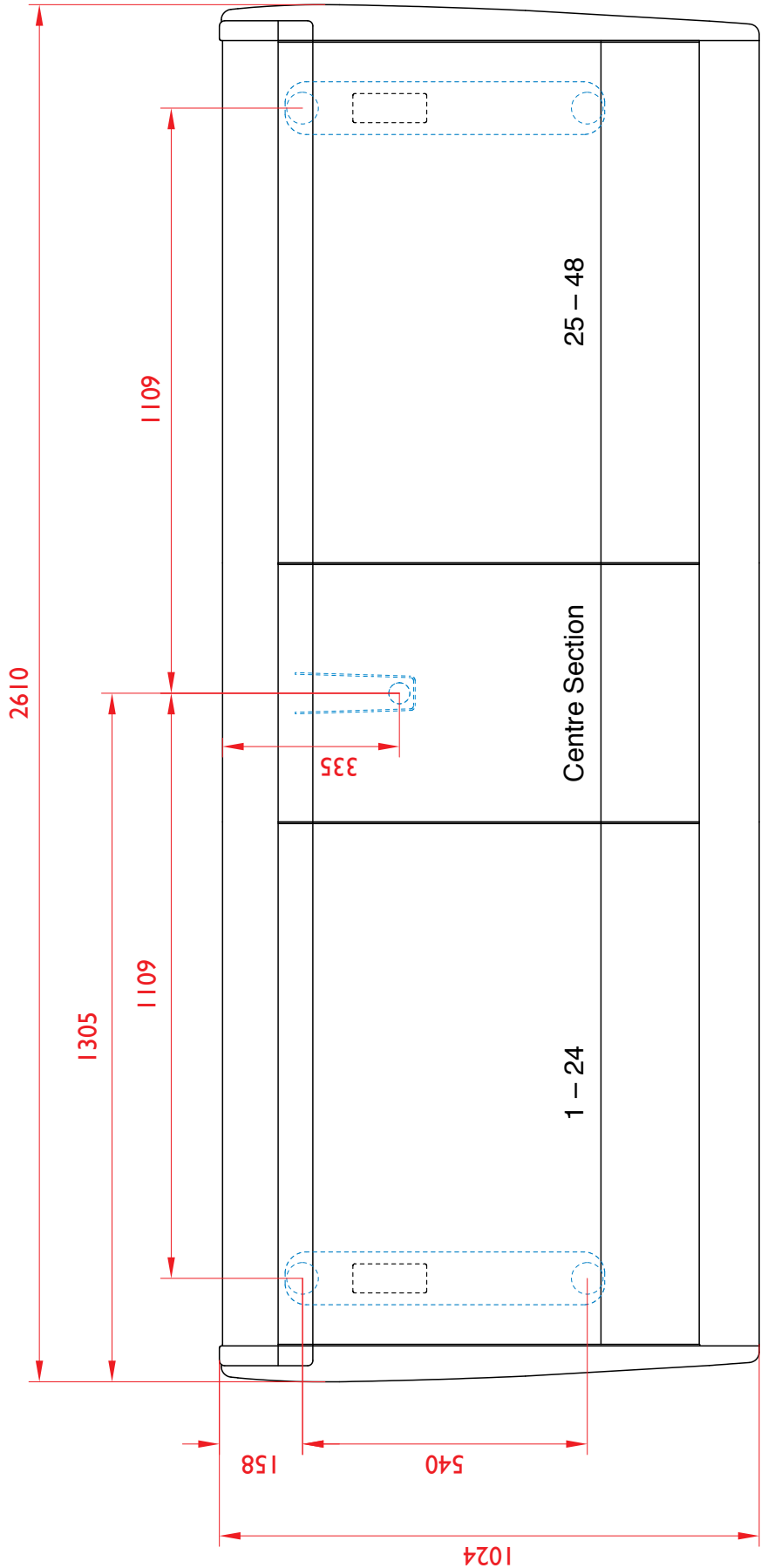


SWITCH	1	2	3	4	5	6
FULL NORMALL	ON	ON	–	–	–	–
HALF NORMAL	–	–	ON	ON	–	–
EARTH LINK	–	–	–	–	ON	–
EARTH BUS	–	–	–	–	ON	ON

- SWA = patchpoints 1 [9,17,25,33,41]□
SWB = patchpoints 2 [10,18,26,34,42]□
SWC = patchpoints 3 [11,19,27,35,43]□
SWD = patchpoints 4 [12,20,28,36,44]□
SWE = patchpoints 5 [13,21,29,37,45]□
SWF = patchpoints 6 [14,22,30,38,46]□
SWG = patchpoints 7 [15,23,31,39,47]□
SWH = patchpoints 8 [16,24,32,40,48]

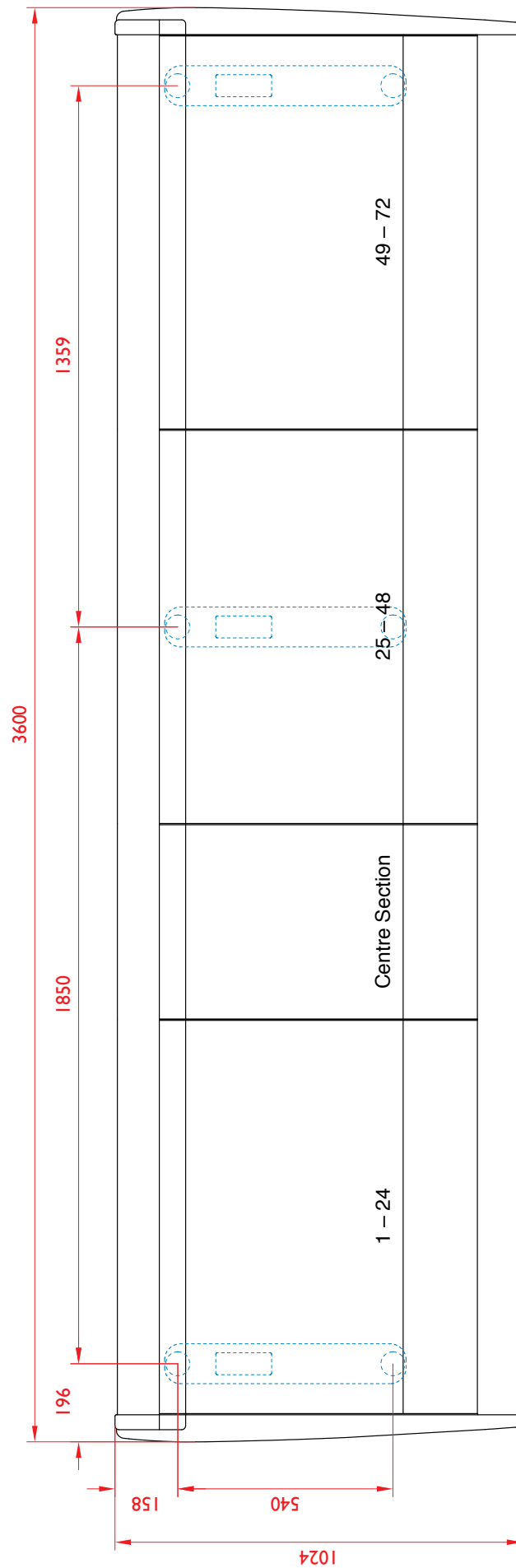
APPENDIX E – CONSOLE FOOTPRINTS

48 CHANNEL FOOTPRINT

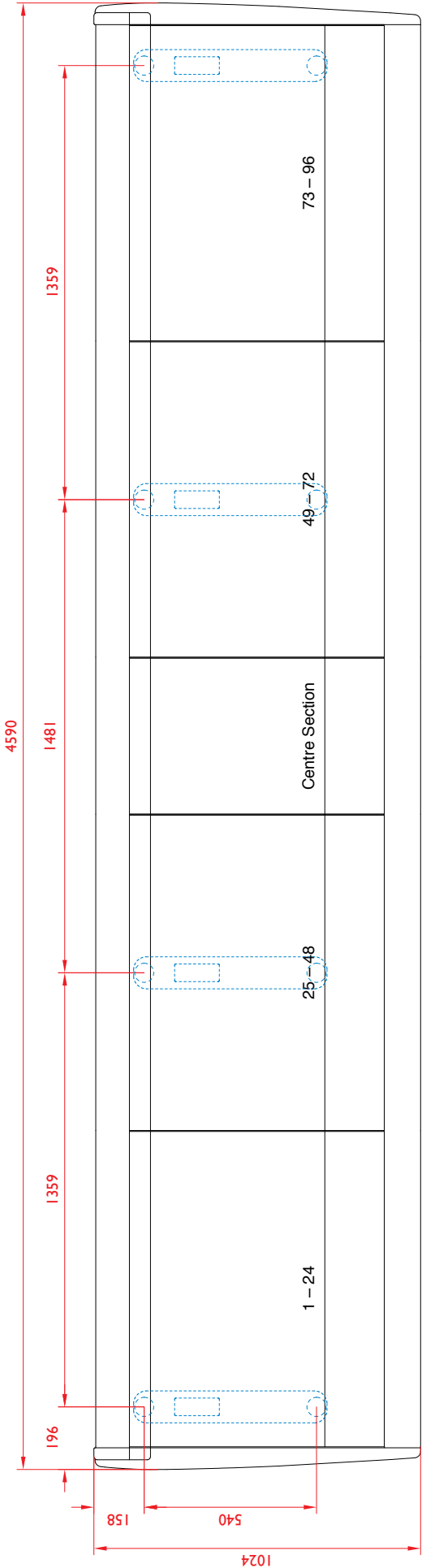


72 CHANNEL FOOTPRINT

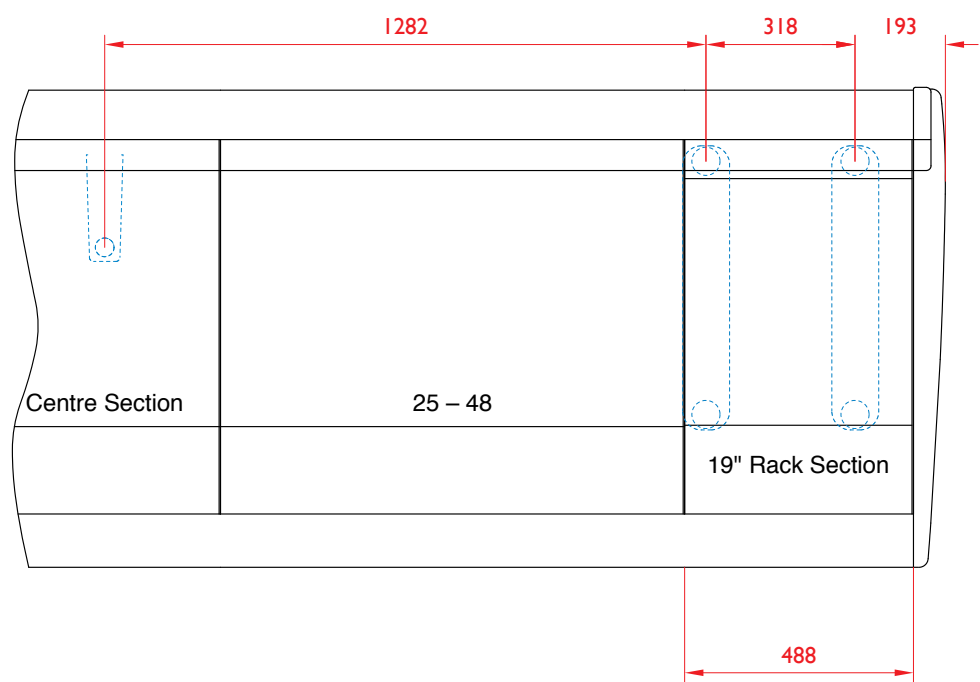
(Centre section can be positioned to the right of any channel bay)



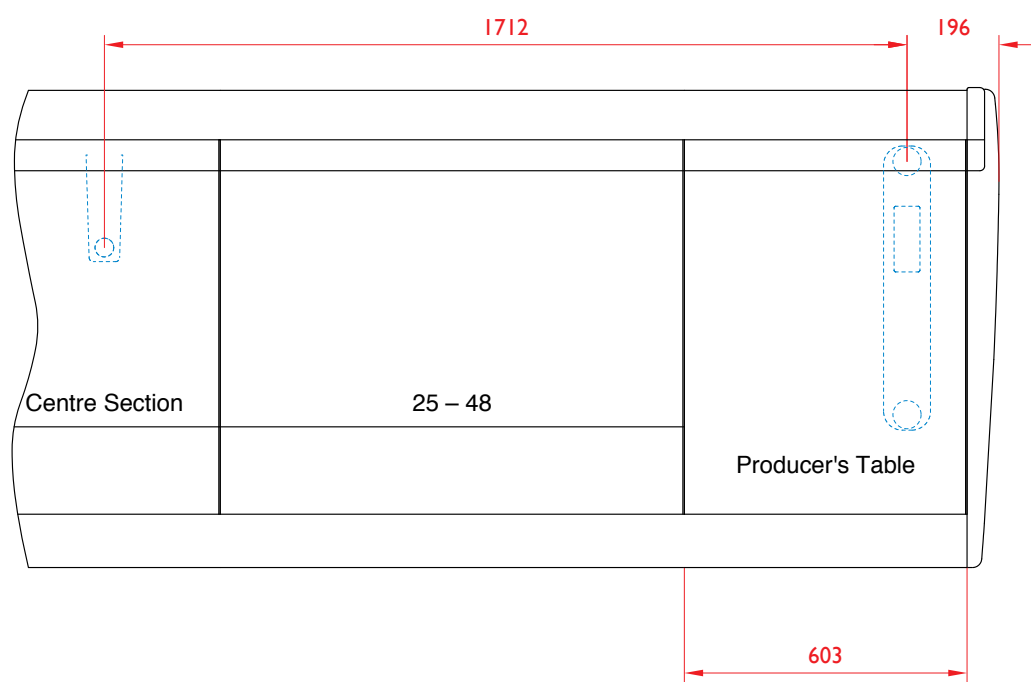
96 CHANNEL FOOTPRINT
(Centre section can be positioned to the right of any channel bay)



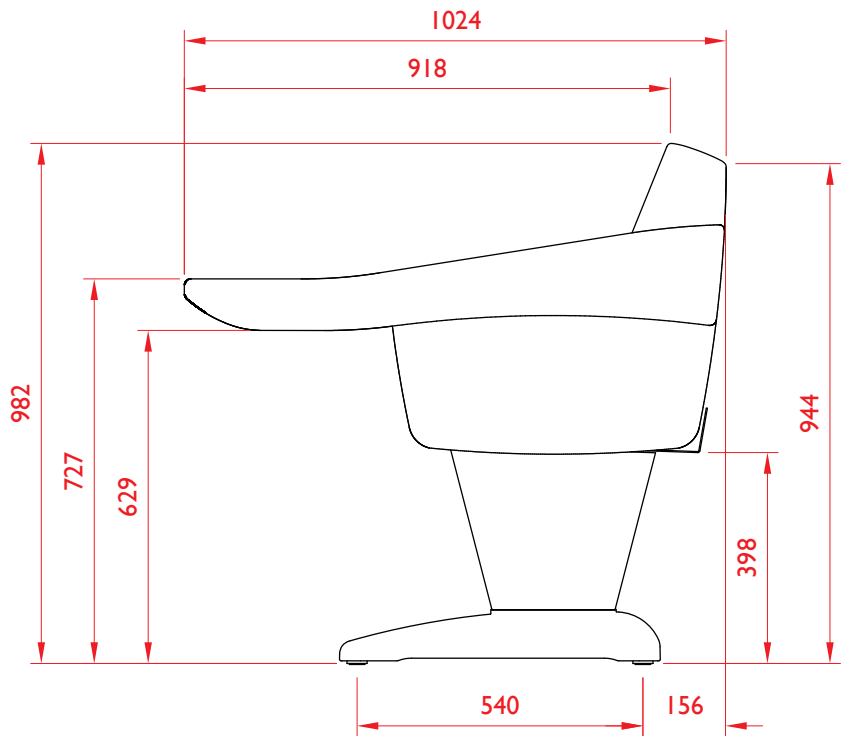
INTERNAL 19" PATCHBAY SECTION



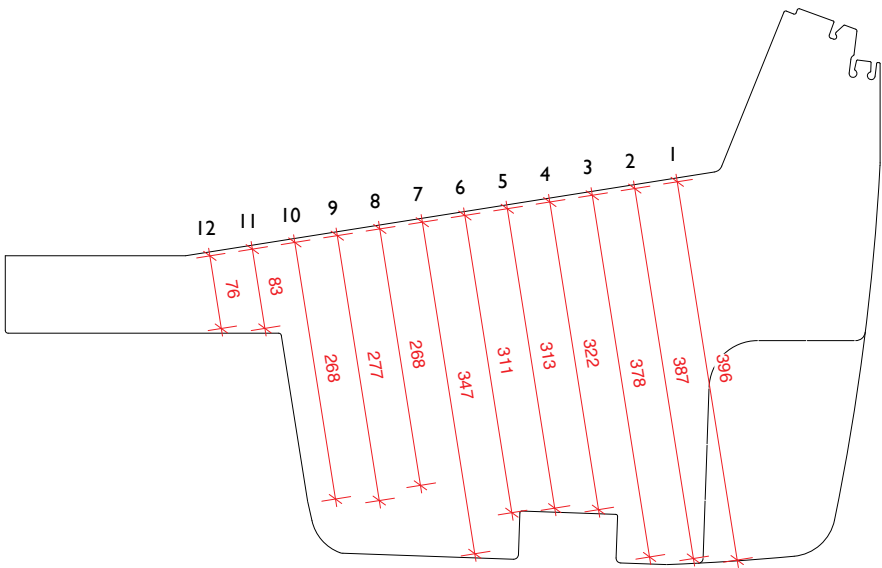
INTERNAL PRODUCER'S TABLE



DUALITY PROFILE



19" SECTION RACKING DEPTHS



APPENDIX F – ENVIRONMENTAL SPECIFICATION

Temperature	Operating: Non-operating: Max. Gradient:	5 to 30 Deg. C -20 to 50 Deg. C 15 Deg. C/Hour
Relative Humidity	Operating: Non-operating: Max. Wet bulb:	30 to 80 % 5 to 90 % 29 Deg. C (non-condensing)
Vibration	Operating: Non-operating, power off:	< 0.2 G (3 - 100Hz.) < 0.4 G (3 - 100Hz.)
Shock	Operating: Non-operating:	< 2 G (10mSec. Max.) < 10 G (10mSec. Max.)
Altitude (Above sea level)	Operating: Non-operating:	0 to 3,000 m 0 to 12,000 m

NOTES RELATING TO STATIC AND AIR CONDITIONING

- Any item of electronic equipment can be affected by electrostatic discharge. It is considered good practice to avoid using fully insulating floor coverings in technical areas.
- Air conditioning will usually be required. Note however, that a cool and dry atmosphere can significantly increase the likelihood of a build-up of static charge. It is recommended that air conditioning systems are designed such that the relative humidity does not fall below 30% during periods of operation.

