

Nucleus and Reaper Tutorial

V1.0

This tutorial details the steps required to enable communication between Cockos Reaper V4.02 and your SSL Nucleus console for control surface operation. For Nucleus soundcard operation please refer to the Nucleus User Guide.

This tutorial assumes that you have already installed the Nucleus software on your DAW and that there are both a working network connection and direct USB connection to the console. If you have yet to configure this part of your system please refer to the Nucleus Owner's Manual before continuing.

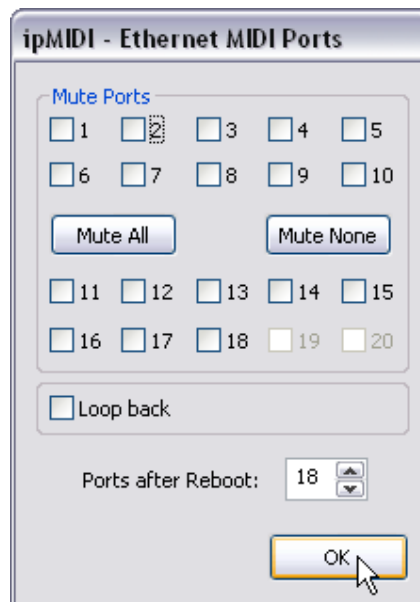
Windows Computers

Windows XP, Vista and Windows 7 (32+64-bit)

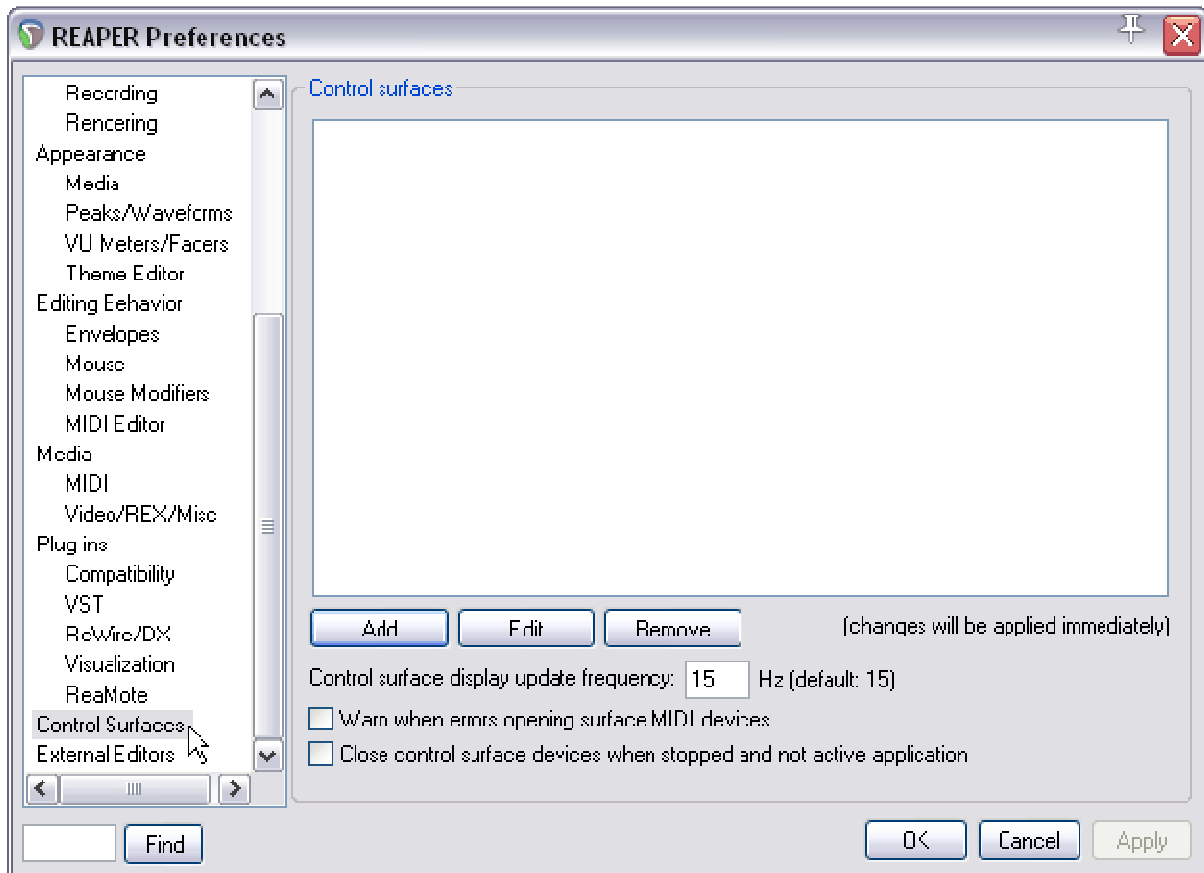
1. Locate the ipMIDI Monitor application. By default this is in *Start Menu>Programs>ipMIDI - Ethernet MIDI Port*. You can also start it by double-clicking the ipMIDI icon (shown below) in the system tray.



2. Ensure there are at least two active ipPorts and the 'Loop back' box is unchecked, then click 'OK' to continue. If you find that you need to add ports, reboot the computer afterwards to activate them.

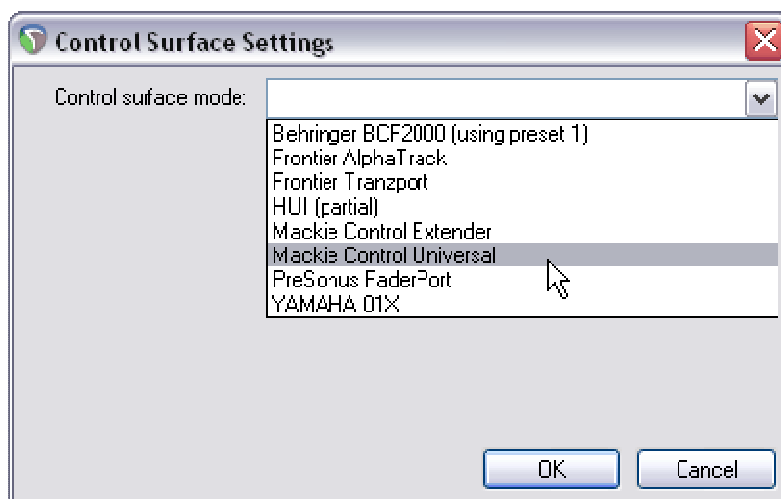


3. Launch Reaper and click 'Preferences' under the 'Options' menu.
4. In the Preferences window, scroll down the left-hand pane and select 'Control Surfaces'.

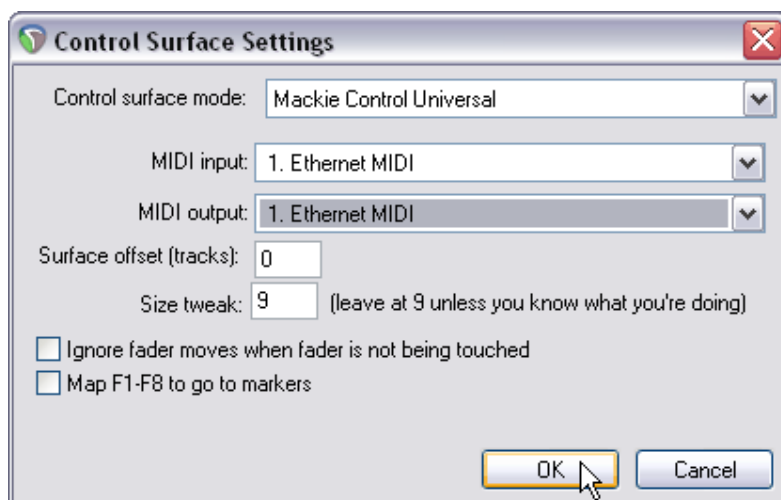


5. Click the 'Add' button.

6. Set the Control surface mode to 'Mackie Control Universal'.

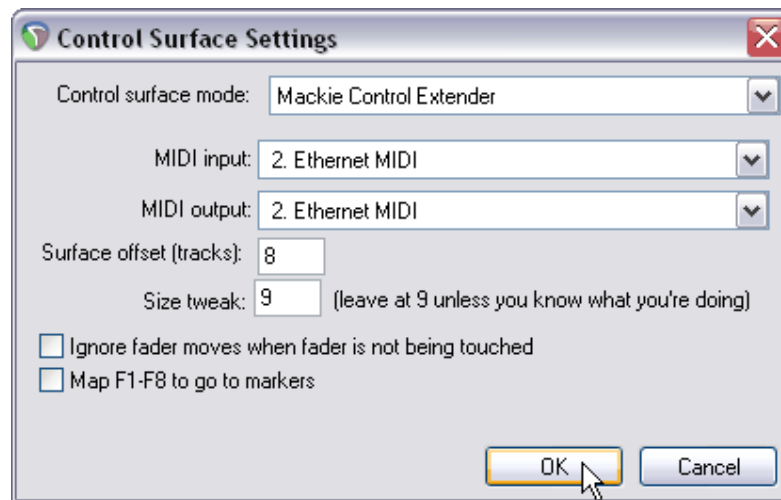


7. Set both the MIDI input and MIDI output to '1. Ethernet MIDI'.



8. Click 'OK' to close the Control Surface Settings dialogue.
9. Click the 'Add' button.
10. Set the Control surface mode to 'Mackie Control Extender'.
11. Set both the 'MIDI input' and 'MIDI output' to '2. Ethernet MIDI'.

12. Set the 'Surface offset (tracks)' to 8.

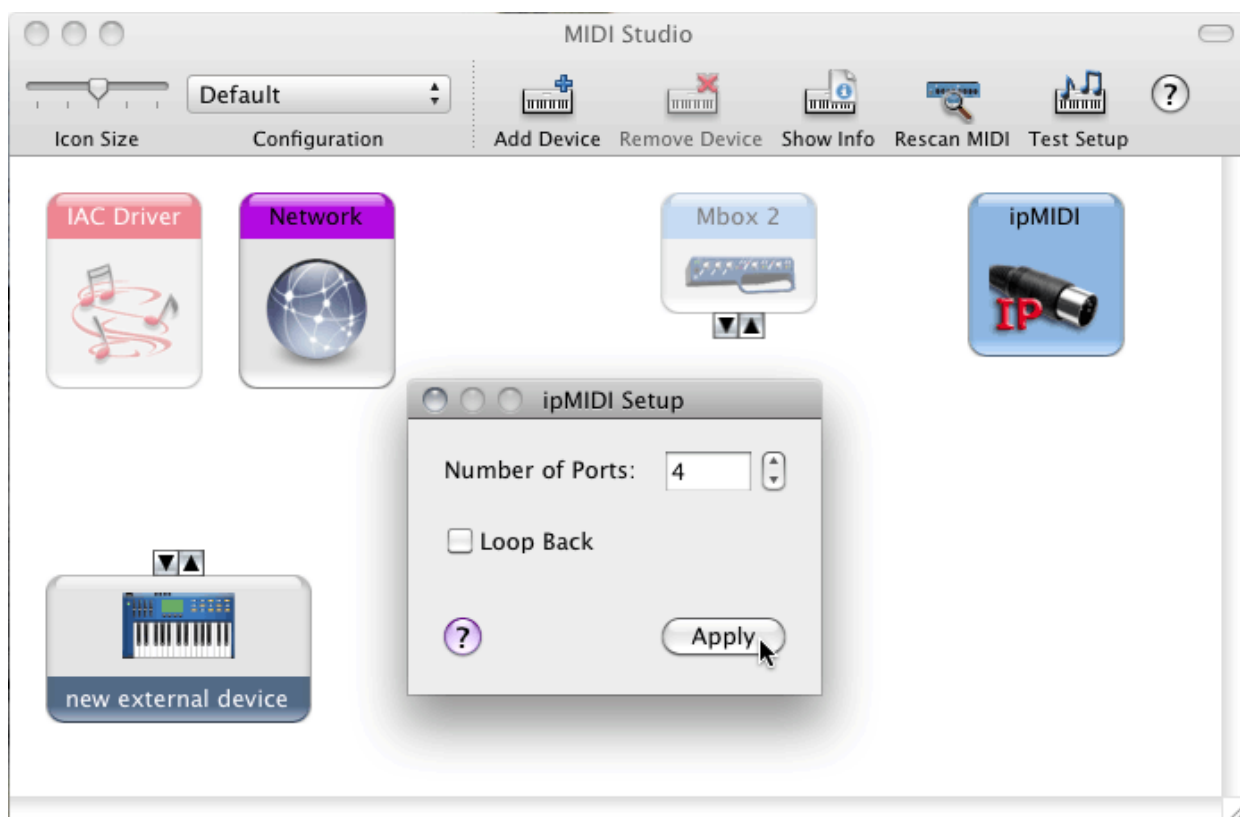


13. Click 'OK' to close the Control Surface Settings dialogue.
14. Click 'OK' again to close the Preferences window.
15. Switch to the Nucleus Remote software. Select 'DAW Layer 1' and ensure the selected profile for this layer is 'Nuendo Default'. Depending on the current setting this may require a reboot to set the Nucleus to Mackie Control + Extender mode.
16. Test for correct operation.

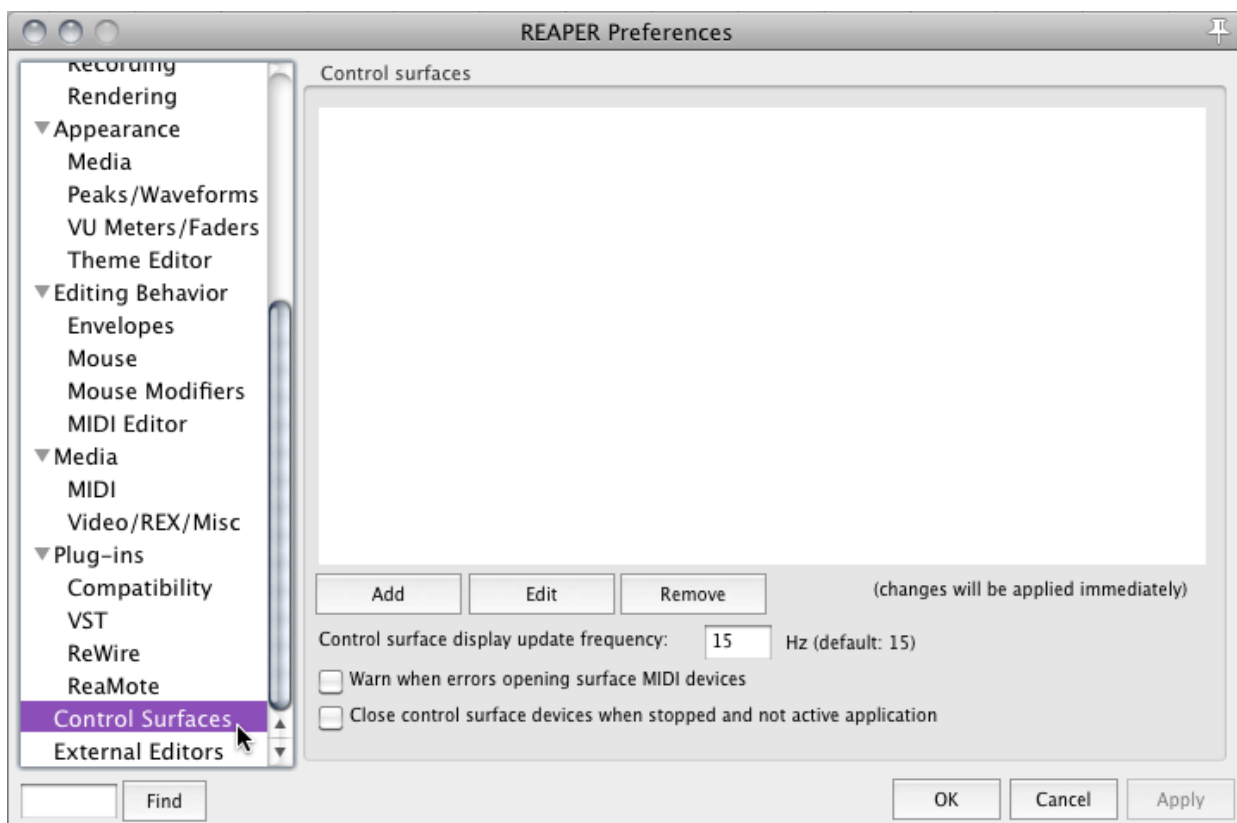
Apple Macintosh Computers

Mac OS 10.5.8 or higher

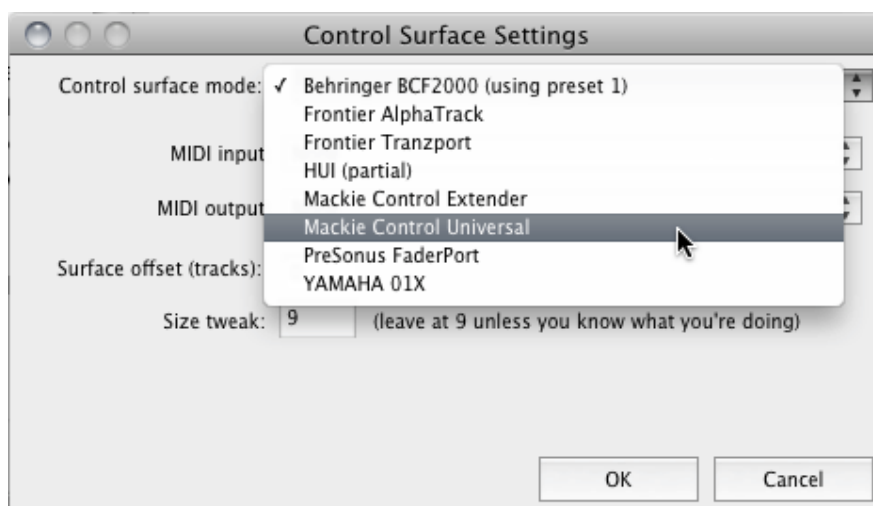
1. With all MIDI applications closed, navigate to *MachD>Applications>Utilities>Audio MIDI Setup*.
2. If the MIDI window is not open go to *Window>Show MIDI Window*.
3. Double click the ipMIDI icon.
4. Ensure there are at least two active ipPorts and the 'Loop Back' box is unchecked and click 'Apply'.



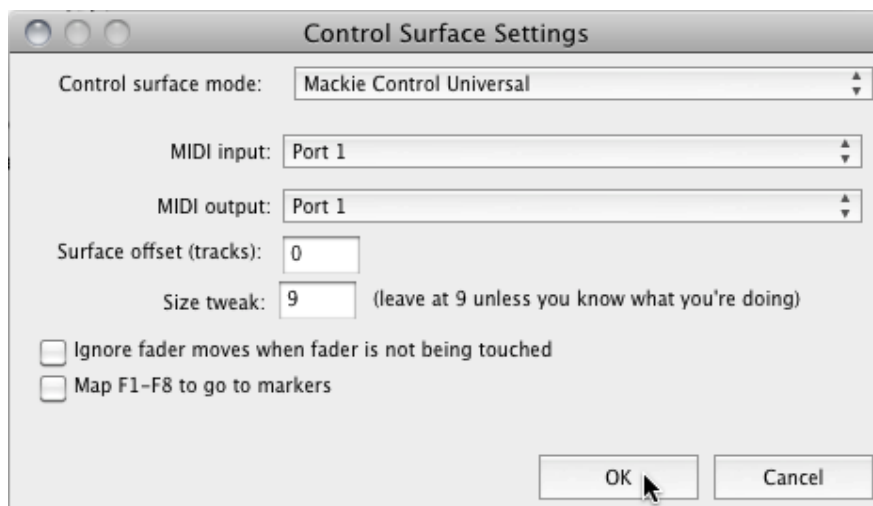
5. Launch Reaper and click 'Preferences' under the 'Options' menu.
6. In the Preferences window, scroll down the left-hand pane and select 'Control Surfaces'.



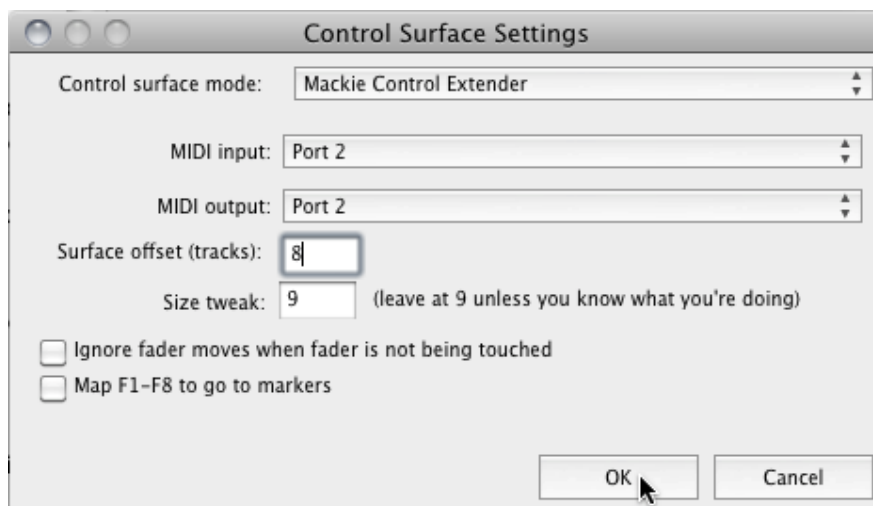
7. Click the 'Add' button.
8. Set the Control surface mode to 'Mackie Control Universal'.



9. Set both the 'MIDI input' and 'MIDI output' to 'Port 1'.



10. Click 'OK' to close the Control Surface Settings dialogue.
11. Click the 'Add' Add button.
12. Set the Control surface mode to 'Mackie Control Extender'.
13. Set both the 'MIDI input' and 'MIDI output' to 'Port 2'.
14. Set the 'Surface offset (tracks)' to 8.



15. Click 'OK' to close the Control Surface Settings dialogue.

16. Click 'OK' again to close the Preferences window.
17. Switch to the Nucleus Remote software. Select 'DAW Layer 1' and ensure the selected profile for this layer is 'Nuendo Default'. Depending on the current setting this may require a reboot to set the Nucleus to Mackie Control + Extender mode.
18. Test for correct operation.